

# The River Thames

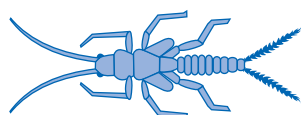
## Activity 1

**Make your own river. (It may be less messy if you try this out of doors!)**

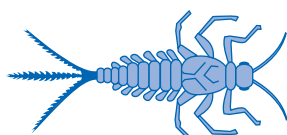
You will need:

a mixture of pebbles, gravel, sand and soil  
 a bucket of water  
 a piece of guttering  
 a large board or tray  
 a brick

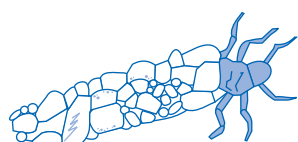
1. Stand the guttering on the brick so that it slopes gently down onto the board or tray.
2. Put some of the mixed up pebbles, gravel, sand and soil into the top end of the guttering.
3. Gently pour water into the guttering.
4. Which particles are carried away first by the water?
5. What happens at the far end of the guttering, where your "river" reaches the "sea"?



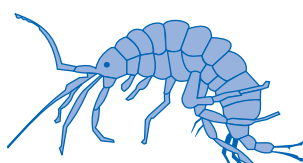
Stonefly nymph



Mayfly nymph



Caddisfly nymph



Freshwater shrimp

## Activity 2

**What's the water like?**

You can measure the number of living creatures a local stream.

You will need:

wellingtons  
 a net  
 a margarine tub filled with river water  
 a hand lens  
 pen and paper

**Remember to take care near water, and always tell someone where you are going!**

1. Stand the guttering on the brick so that it slopes gently down onto the board or tray.
2. Stand in a safe part of the stream and gently turn over the stones and mud with your feet.
3. Hold your net downstream to catch any creatures which are disturbed.
4. Tip them into the margarine tub to examine them.
5. After your test, put the stones and creatures back where you found them.

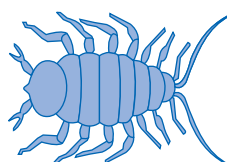
These are some of the creatures you may find:

Stonefly nymph - lives in clean water

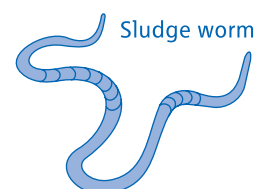
Mayfly nymph - lives in clean water

Caddis fly larva - can live in mildly polluted water

Freshwater shrimp - can live in mildly polluted water



Water louse



Sludge worm