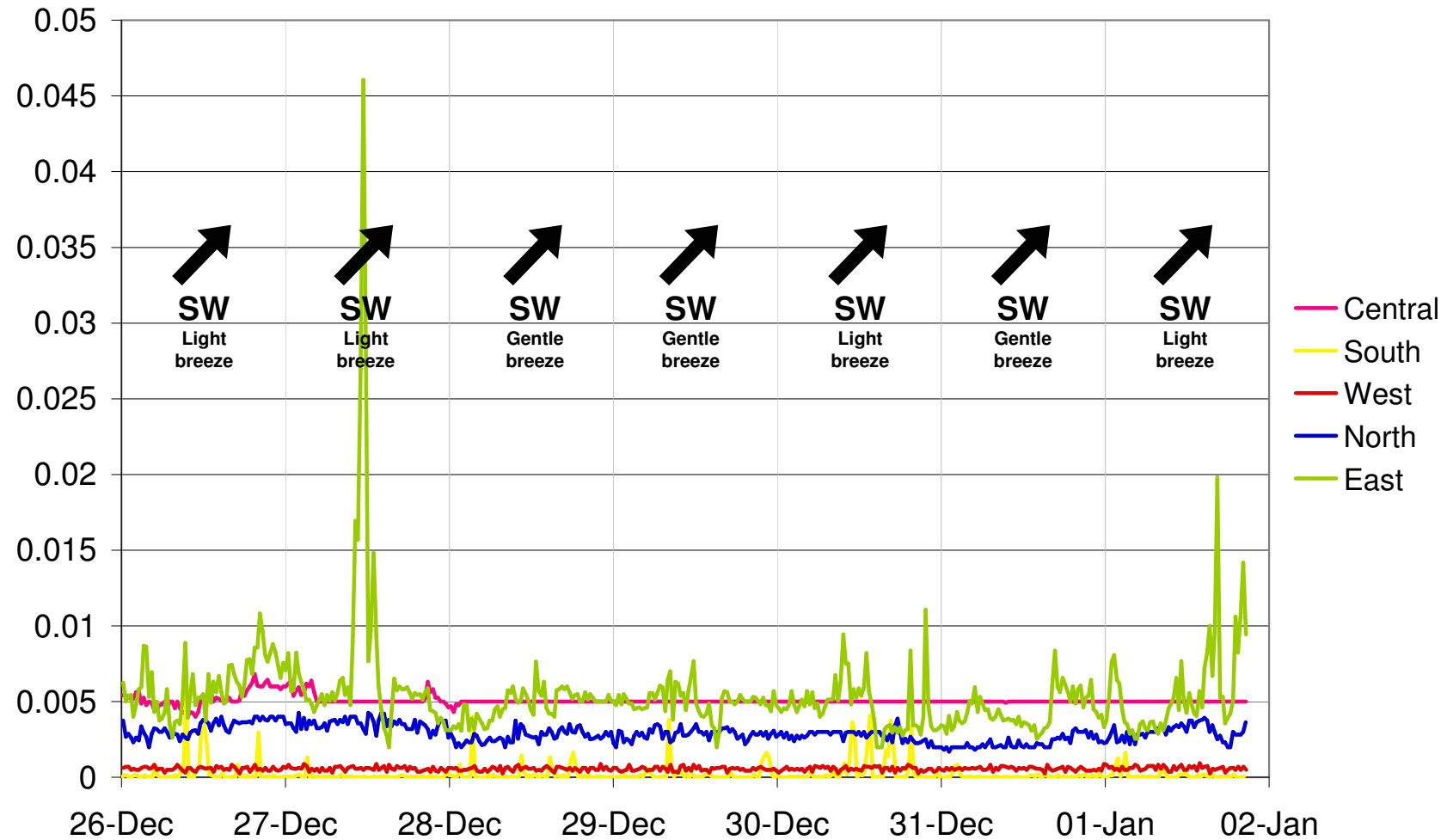
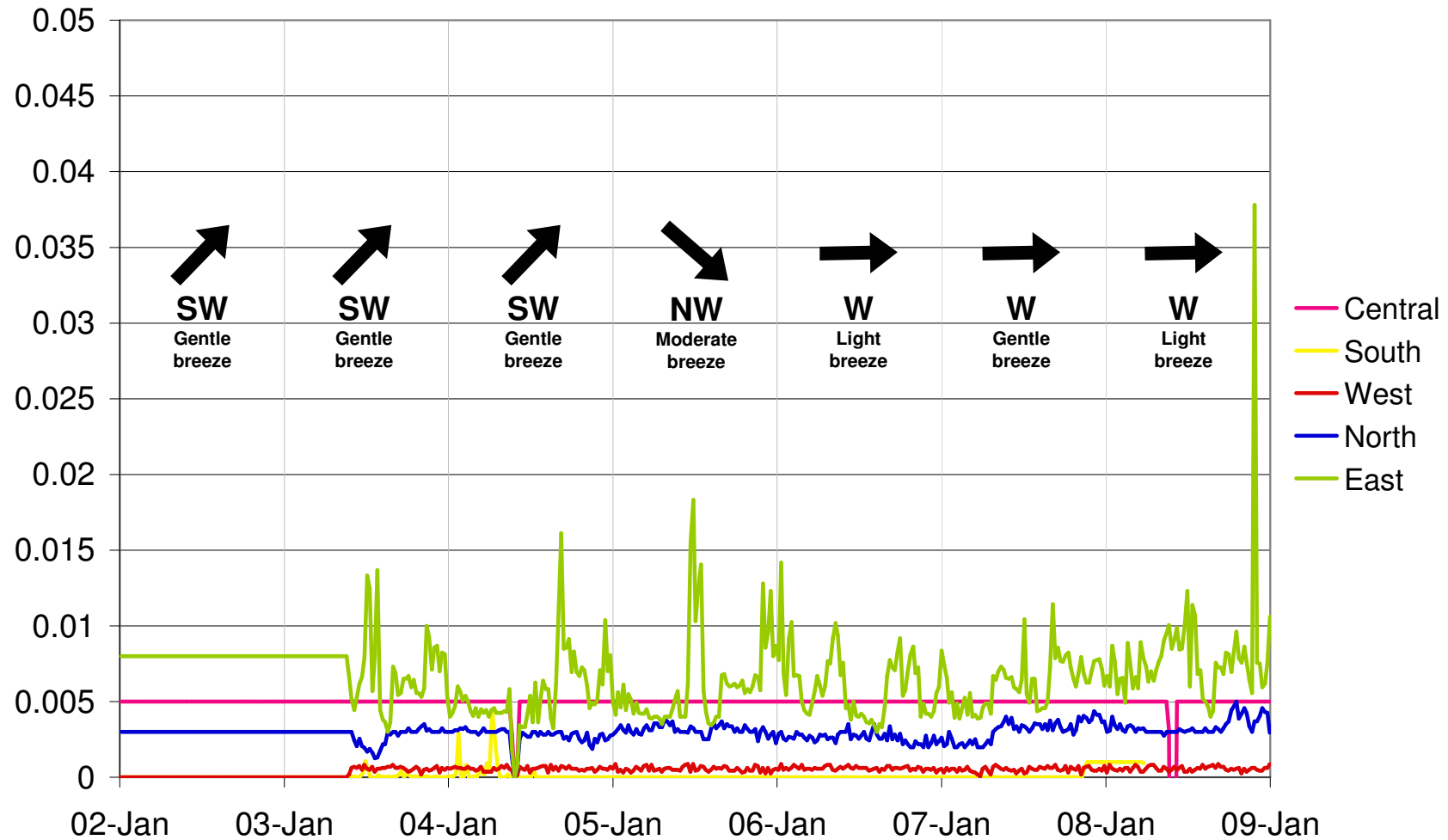


Mogden STW Odour Monitor Readings 25 December 2011 – 1 January 2012



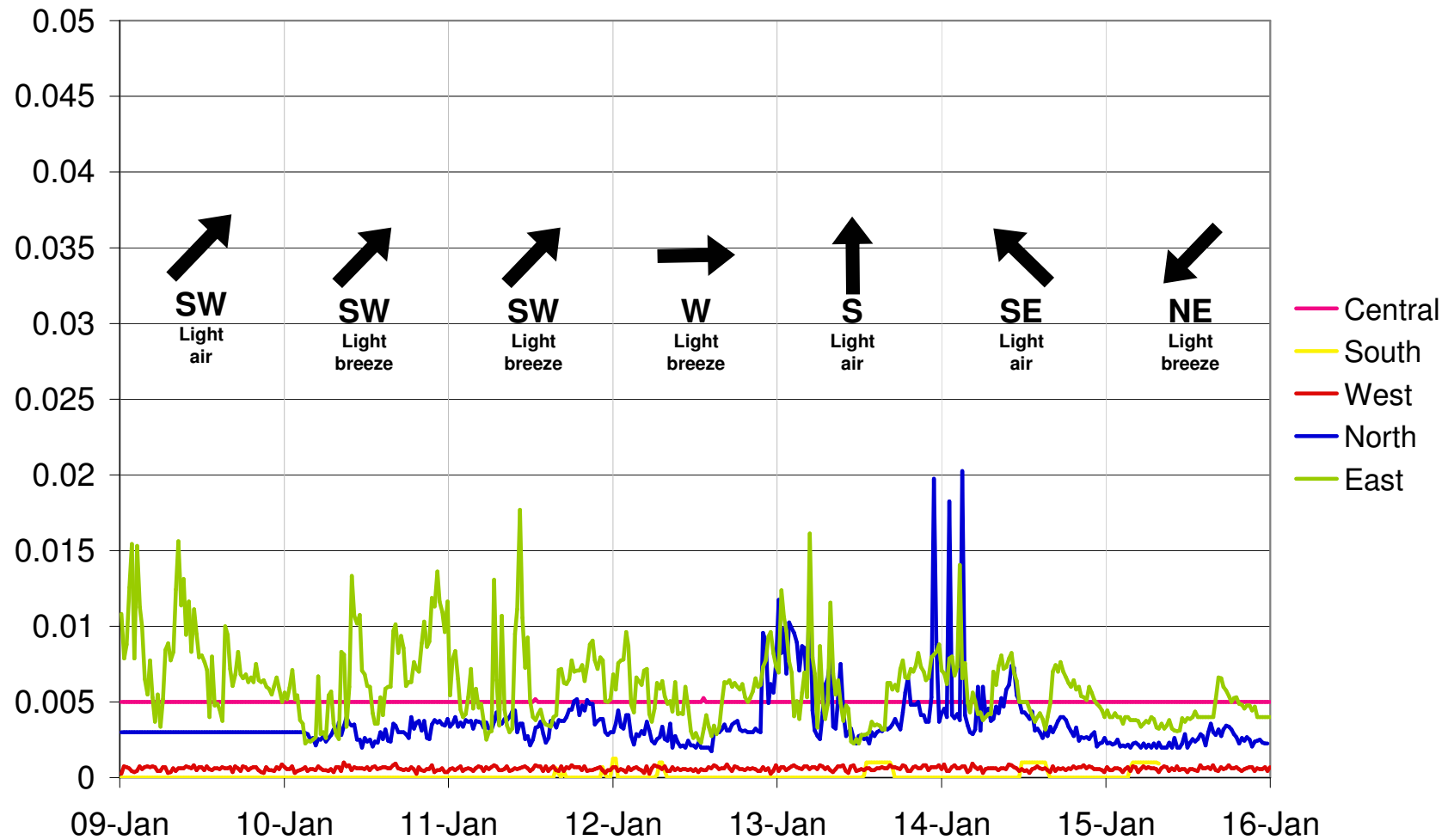
- Arrows indicate the direction the wind was blowing towards at the time indicated at the bottom.
- Wind strength is based on the definitions in the Beaufort scale
- For more information about these results, please see the site log in 'Community Relations'

Mogden STW Odour Monitor Readings 2 – 8 January 2012



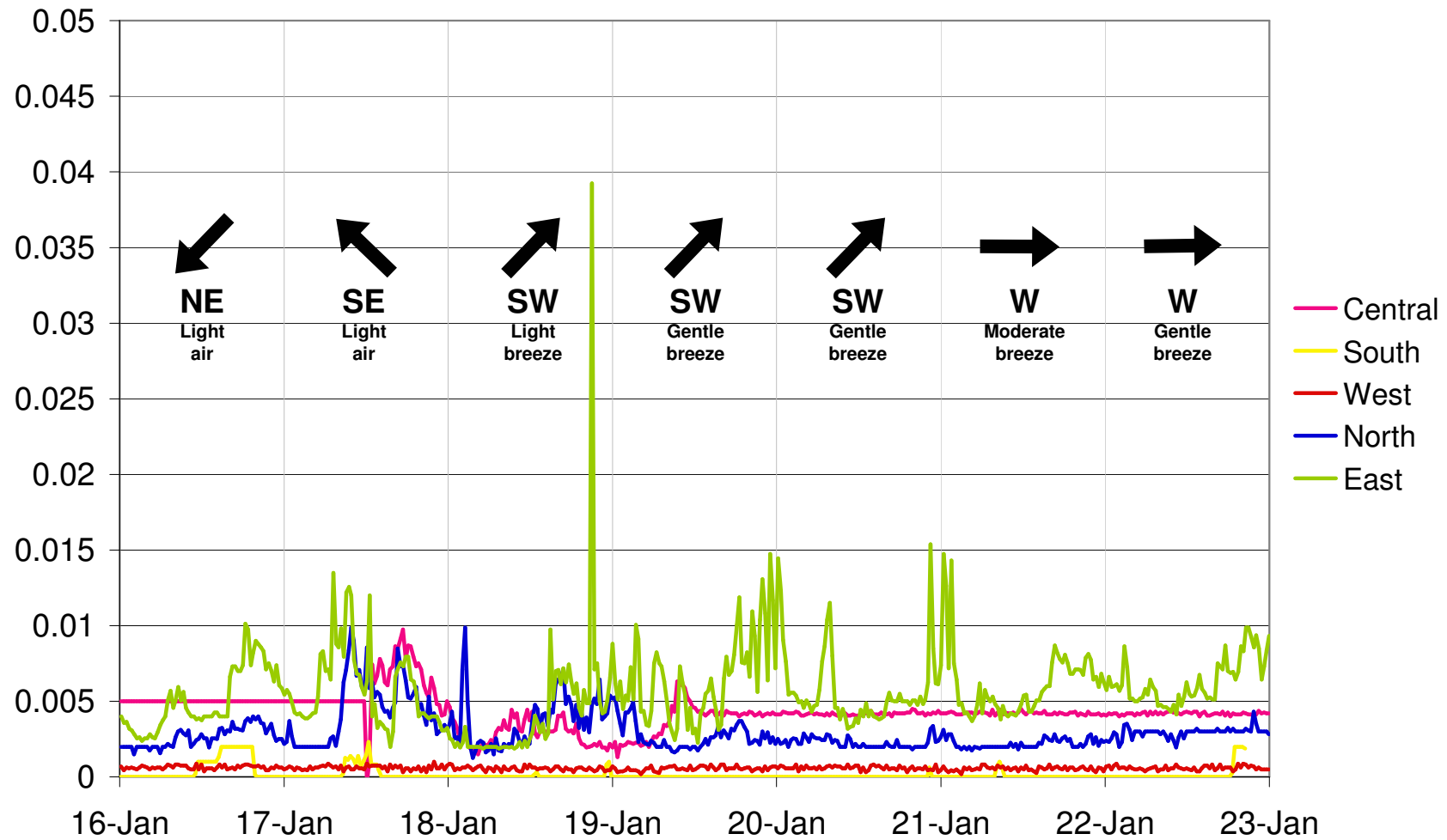
- Arrows indicate the direction the wind was blowing towards at the time indicated at the bottom.
- Wind strength is based on the definitions in the Beaufort scale
- For more information about these results, please see the site log in 'Community Relations'

Mogden STW Odour Monitor Readings 9 – 15 January 2012



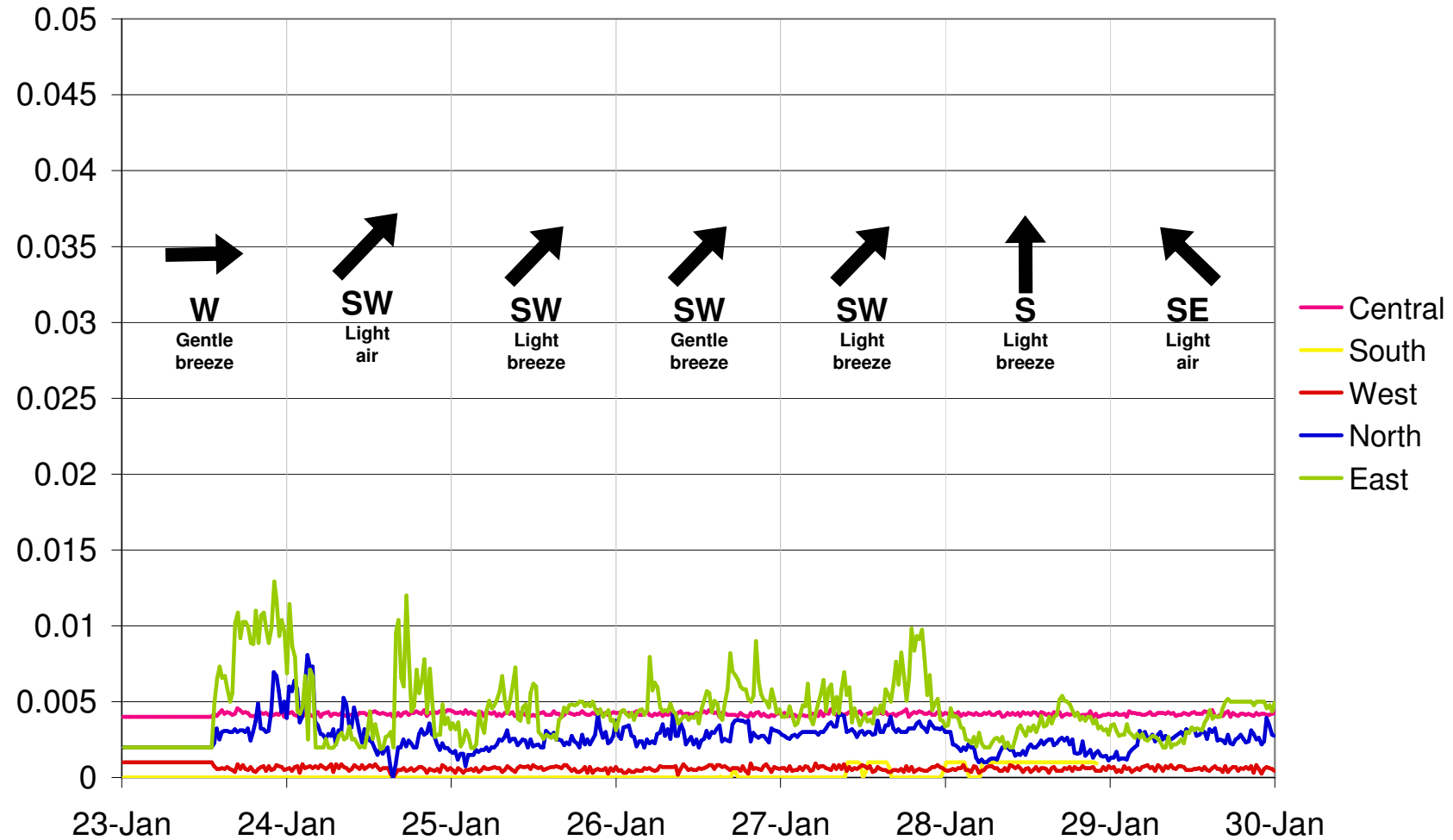
- Arrows indicate the direction the wind was blowing towards at the time indicated at the bottom.
- Wind strength is based on the definitions in the Beaufort scale
- For more information about these results, please see the site log in 'Community Relations'

Mogden STW Odour Monitor Readings 16 – 22 January 2012



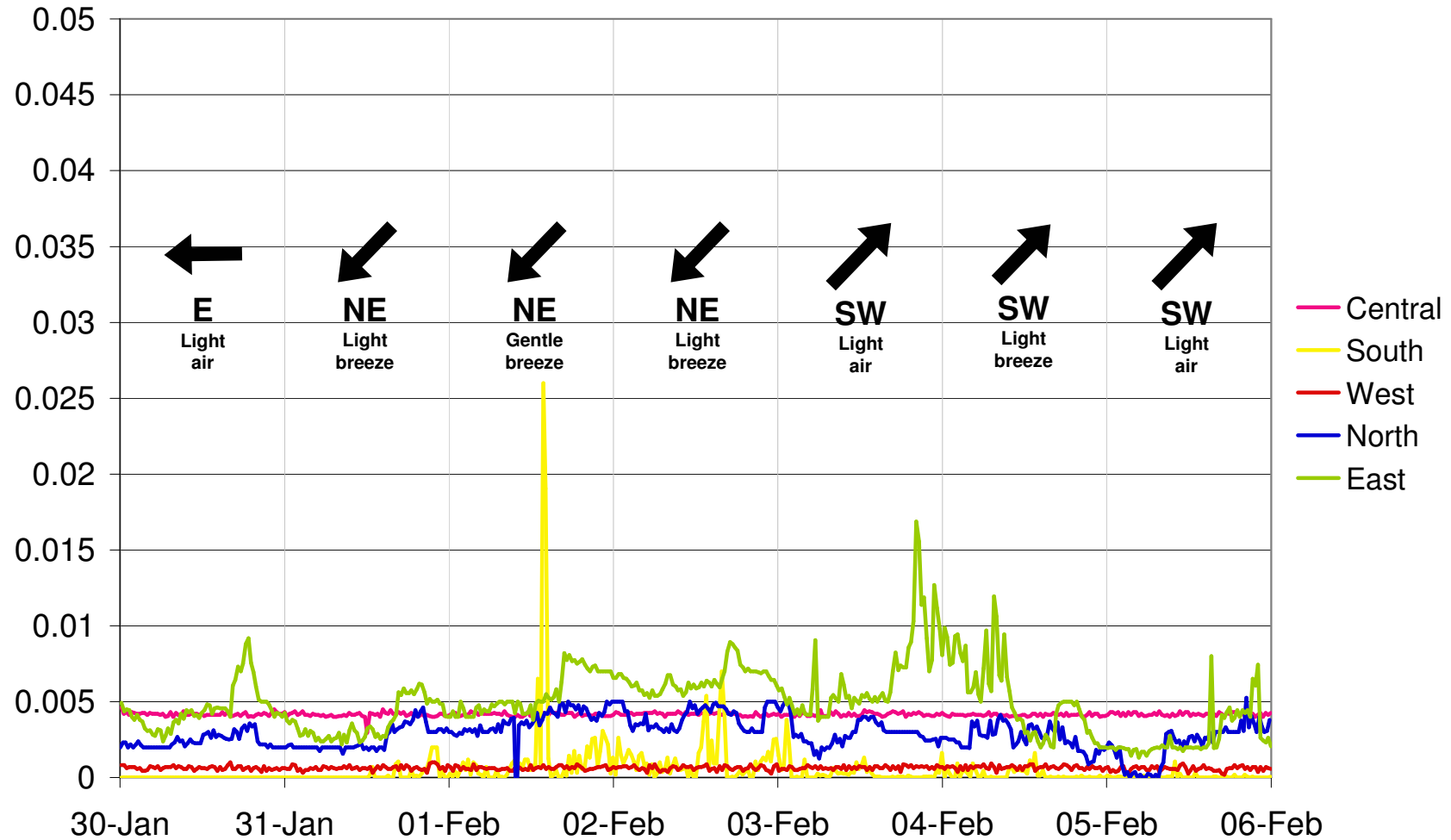
- Arrows indicate the direction the wind was blowing towards at the time indicated at the bottom.
- Wind strength is based on the definitions in the Beaufort scale
- For more information about these results, please see the site log in 'Community Relations'

Mogden STW Odour Monitor Readings 23 – 29 January 2012



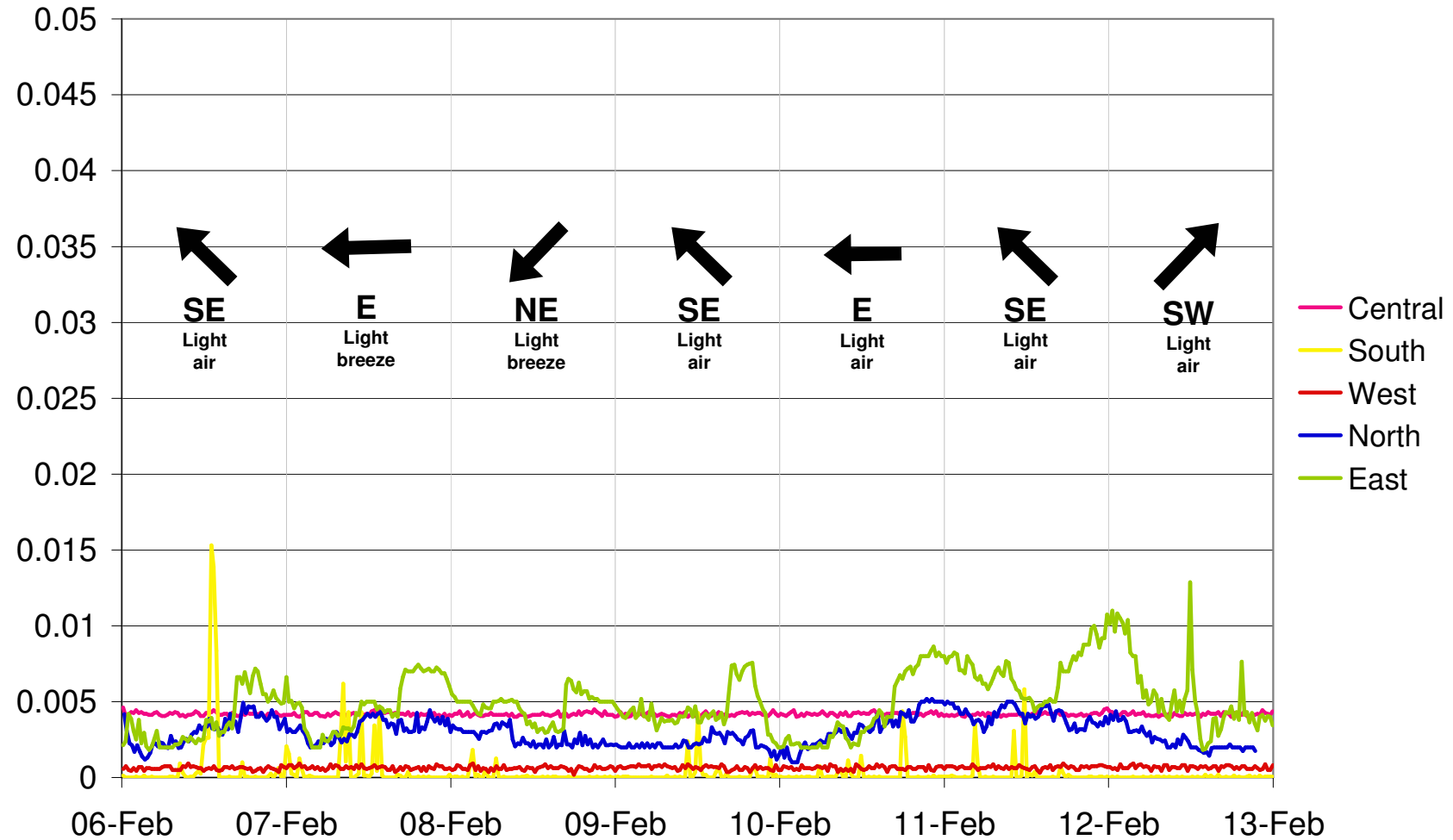
- Arrows indicate the direction the wind was blowing towards at the time indicated at the bottom.
- Wind strength is based on the definitions in the Beaufort scale
- For more information about these results, please see the site log in 'Community Relations'

Mogden STW Odour Monitor Readings 30 January – 5 February 2012



- Arrows indicate the direction the wind was blowing towards at the time indicated at the bottom.
- Wind strength is based on the definitions in the Beaufort scale
- For more information about these results, please see the site log in 'Community Relations'

Mogden STW Odour Monitor Readings 6 – 12 February 2012



- Arrows indicate the direction the wind was blowing towards at the time indicated at the bottom.
- Wind strength is based on the definitions in the Beaufort scale
- For more information about these results, please see the site log in 'Community Relations'