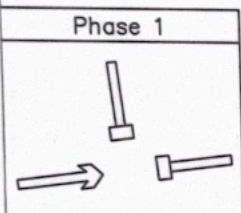
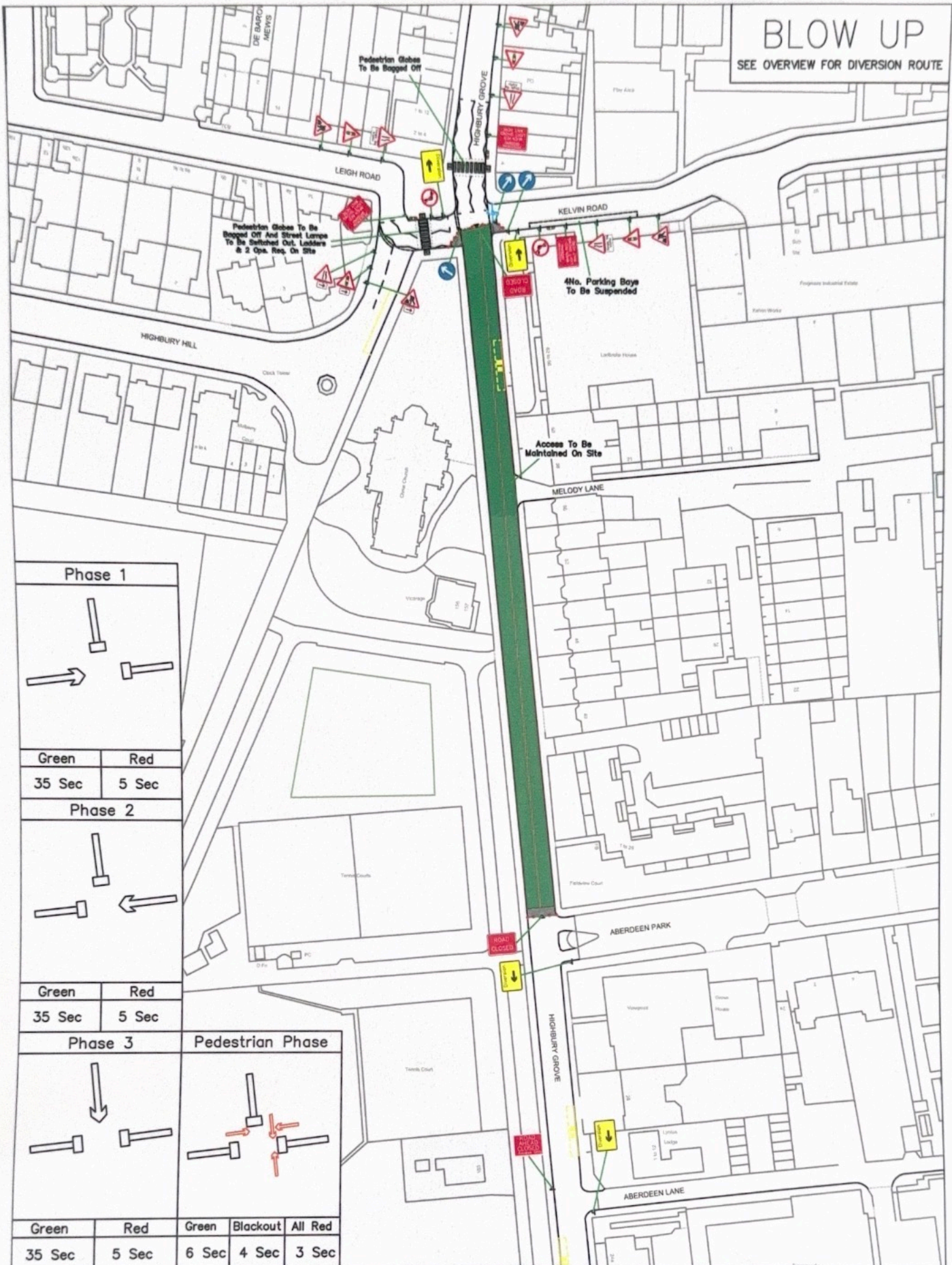
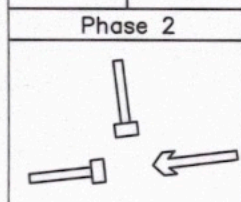


# BLOW UP

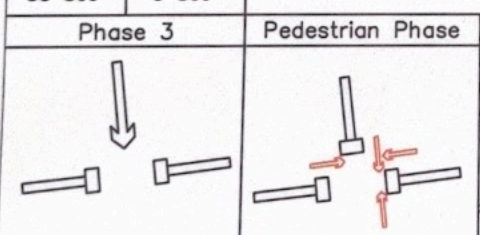
SEE OVERVIEW FOR DIVERSION ROUTE



Green	Red
35 Sec	5 Sec



Green	Red
35 Sec	5 Sec



Green	Red	Green	Blackout	All Red
35 Sec	5 Sec	6 Sec	4 Sec	3 Sec



Address:  
Highbury Grove,  
London,  
N5 2AD

Site Ref:  
N/A

Phase:  
003

Traffic Management:  
Road Closure / Diversion  
/ 3 Way Lights

Approved:  
W.Shiple

Foreman  
Approved:  
N/A

Drawing Number:  
TB7247

Actual Road Width:	Varies
Remaining Road Width:	4.6m / 0m
Total Length Of Site:	195m
Distance Of First Sign To First Cone:	20-45m
Width Of Obstruction Including Safety Zone:	Varies

Date:  
17.10.24  
30.10.24

Issue:  
2-OF  
3-OF

Road Speed:  
20mph

Job Number:  
93332

1.2m Max Taper Cone Spacings  
9m Max Longitudinal Cone Spacings  
1.2m Min Footway / Walkway To Be Maintained  
0.5m Min Sideways Safety Zone  
0.5m Min Longways Safety Zone  
Measurements Will Be Subject To Survey

- Key:**
- Working Space
  - Safety Zones
  - Client Works
  - Terraplas
  - Trackway
  - Spoil
  - Pedestrian Walkway In The Road
  - Pedestrian Ramp
  - Man On Site
  - No Parking Cones
  - Traffic Cones
  - Sign Face
  - Traffic Signal
  - Pedestrian Signal
  - Traffic Barrier
  - Pedestrian Barrier

All Traffic Management Will Comply With The Safety Of Streetworks And Road Works Code Of Practice

TM PLAN  
NOT TO  
SCALE