

SUDS ON HOUSING LAND: EXPERIENCES AND OPPORTUNITIES

THAMES WATER SWMP

APRIL 2022



GROUNDWORK LONDON: INTRO

Creating better places – supporting people to work collectively to make their surroundings greener, more resilient, safer and healthier; and to be actively involved in the way decisions are made about services in their area.

Improving people's prospects – delivering support to increase the confidence, skills, well-being and employability of those furthest removed from the labour market, in particular young people.

Promoting greener living and working – helping people and businesses learn more about their environmental impact and act responsibly to reduce natural resource use and improve their health.



WHY SUDS ON HOUSING LAND?

Because SuDS can be multifunctional

- Flood reduction benefit
- Water quality benefit
- Urban cooling benefit
- Air quality improvement
- Carbon sequestration
- Quality of amenity space
- Biodiversity benefit

Undertapped resource and opportunity

- Newbuild is not enough
- Huge public realm coverage
- It's a doorstep space - local project ownership
- People increasingly expect it
- Great advert for developing vision
- Hyper local knowledge
- People health benefits - physical and mental





NOURISH AND LIFE +: A DIFFERENT APPROACH



SUPPORTED BY
MAYOR OF LONDON



ENGAGEMENT AND COMMUNITIES

Your communities can be a great resource

These are valuable projects that people want:

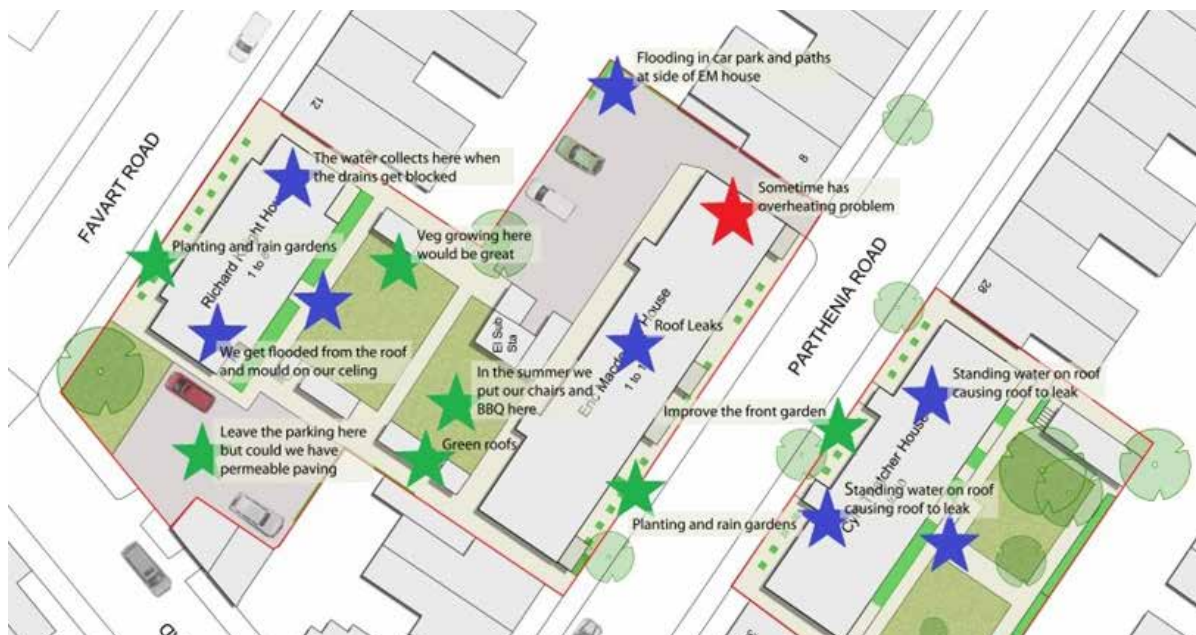
- Increase ownership of a site
- Reduction in existing problems - environmental or social
- Investment in their asset
- Demonstrate political action on climate
- Improving local resilience and understanding

Each project is different:

- Community site mapping
- Onsite signage
- Websites
- Green champions/other training
- Local volunteering groups
- Capacity building
- Energy saving visits

Map out your engagement and comms plan

Working near peoples homes



DESIGN AND PLANNING

How should we think about space?

Have we maximised the opportunities available?

- Have we assessed what's possible?
- Can systems be linked?
- Can colleagues help?
- Can works be phased/programmed?

How do we make the design 'work' in the long term?

- Will it be enjoyed?
- Will it be understood?
- Will people respect it?
- Is the design multifunctional?
- Is it landscape led and integrated?
- Can it be maintained?















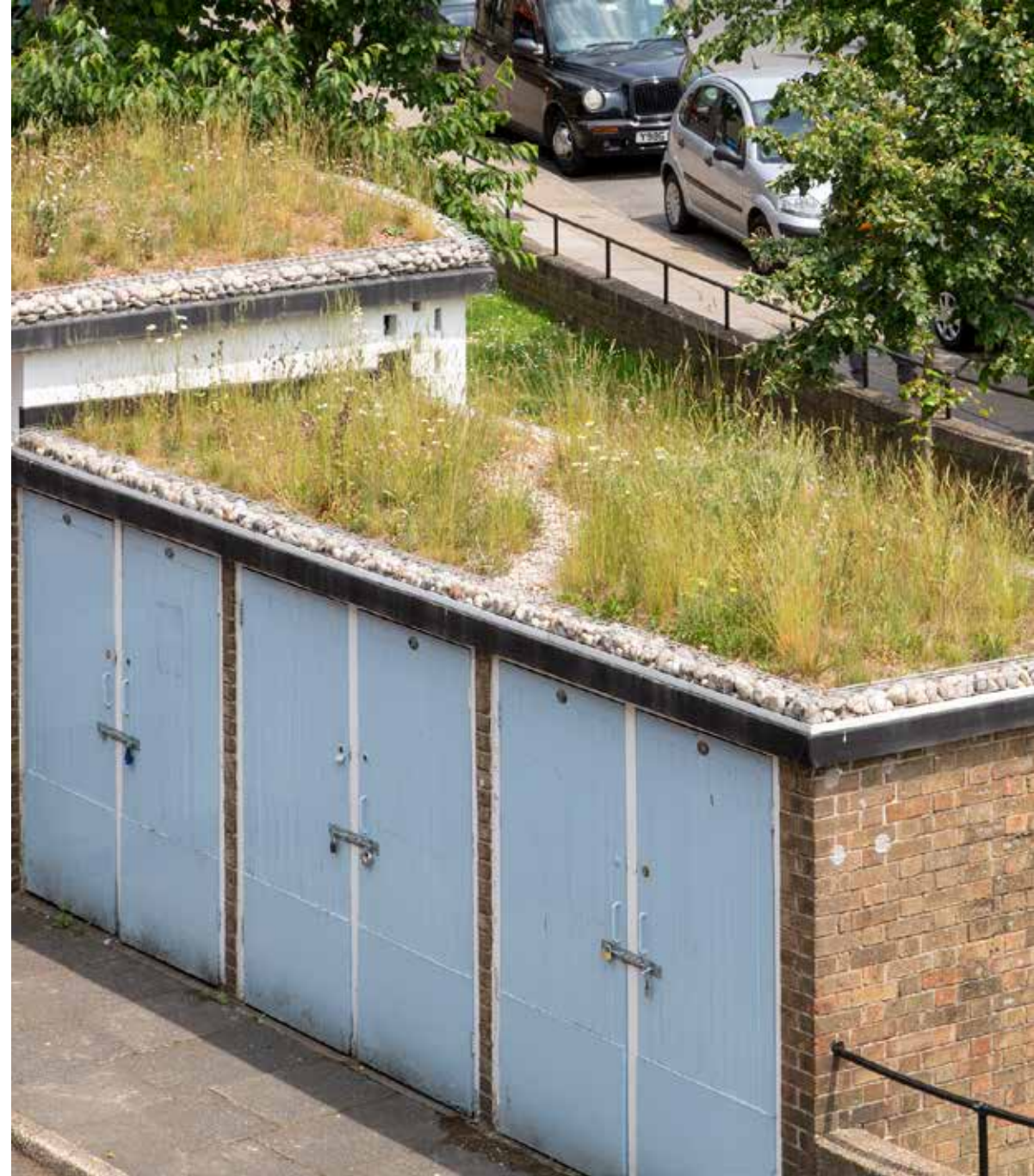






ONSITE, COMPLETION AND MAINTENANCE

- Strong pre-start meeting. Design principles, details and method statements. What will be inspected.
- Annotate your drawings well. Confirm post completion surveys – ensure that the contractor takes the correct finished drawings.
- Right people attending progress and completion meetings
- Site walk with the maintenance contractor at handover
- Celebrate your success – comms plan for post completion



LESSONS LEARNED

Map out your engagement and communication plan

Find your allies - climate, parks, flooding, engagement, highways, housing, communications, regeneration - because:

- Funding
- Larger and wider scale programmes
- Improved benefit

Gather data. Surveys, monitoring, measuring.
Demonstrate your success

Take a landscape led, design based approach

Make your drawings clear and explain key points

Thankyou

David.Ifould@groundwork.org.uk

Groundwork London Implementation Guide
<https://urbanclimateproofing.london/projects/reports/>

GLA SuDS Sector Guidance
https://www.london.gov.uk/sites/default/files/reimagining_rainwater_in_social_housing_v1.pdf

CIRIA Guidance for construction SuDS
<https://www.ciria.org/ItemDetail?iProductcode=C768&Category=BOOK>