



John Burns Primary School  
Giving our Best, Achieving our Highest

SUPPORTED BY  
**MAYOR OF LONDON**

# A Climate Resilient School: Phase 1 design choices

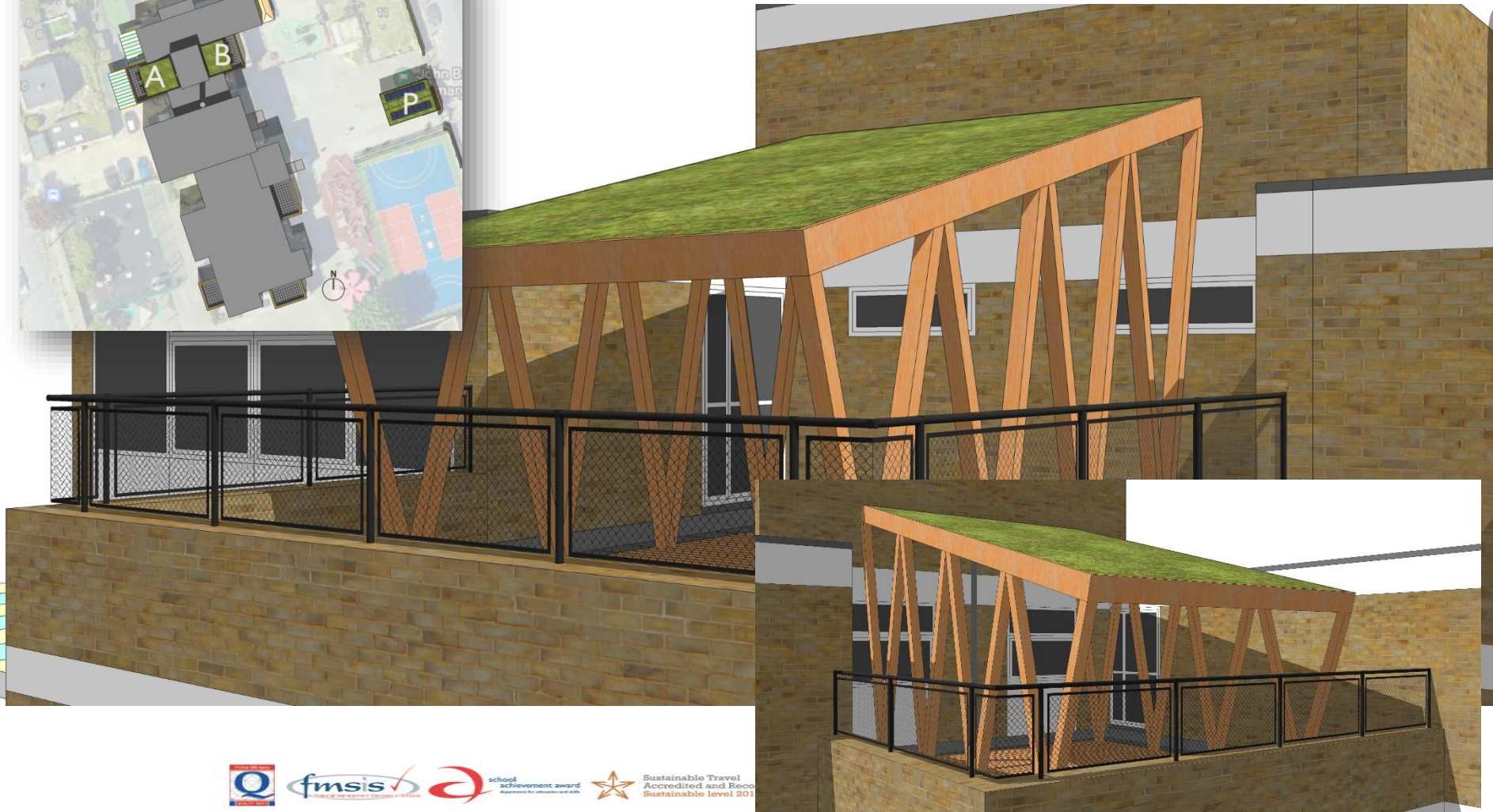


Sustainable Travel  
Accredited and Recognised  
Sustainable level 2012





## Balcony spaces (Pagodas A & B)







## Balcony spaces (Pagodas A & B)



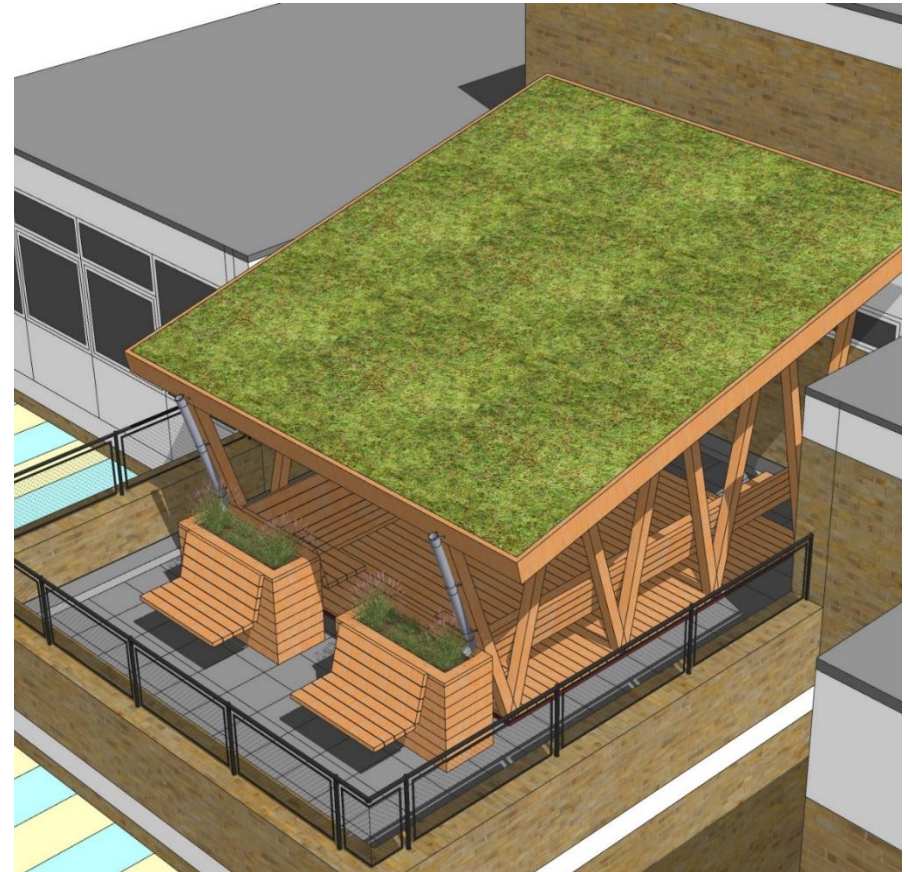
## Balcony spaces (Pagodas A & B)

### DESIGN CHOICES:

- Size ok? **Yes**
- South or east/west facing roof? **East/west-facing.**
- Height of roof / flatter slope? **Halve distance between current height and the white band on school building.**
- No upright in corner by opening door(s)? **Roof cantilevered in corners by doors, with walkway to doors from decking**
- Two planters, or one long one? **One long one, with gap in corner for access to the external bench seats**
- Climbing plants on south/east/west sides? **Yes, to be planted by school.**
- Solar on upper/outside part of east roof? **No solar.**
- Rain chain, watering cans or water wheels on downpipes? **Scot to consider options.**
- Benches on outside of planters? **Yes, as long as there is 1m gap from edge of seat to parapet wall.**

### FOR DAVID:

- Depth/makeup of substrate, type of vegetation? **100mm clay/soil + sedum/wildflower mix.**
- Angle of roof for best water retention? **Less slope, as above.**
- Baffles across slope? **Yes – show as a working detail**
- Permabox/blue roof? **Permablok base (150mm) instead of paving**
- Size of planter(s) (HxWxD)? **600mm width minimum.**
- Where should planters discharge to? **To permablox base.**







## Playground space (Pagoda P)





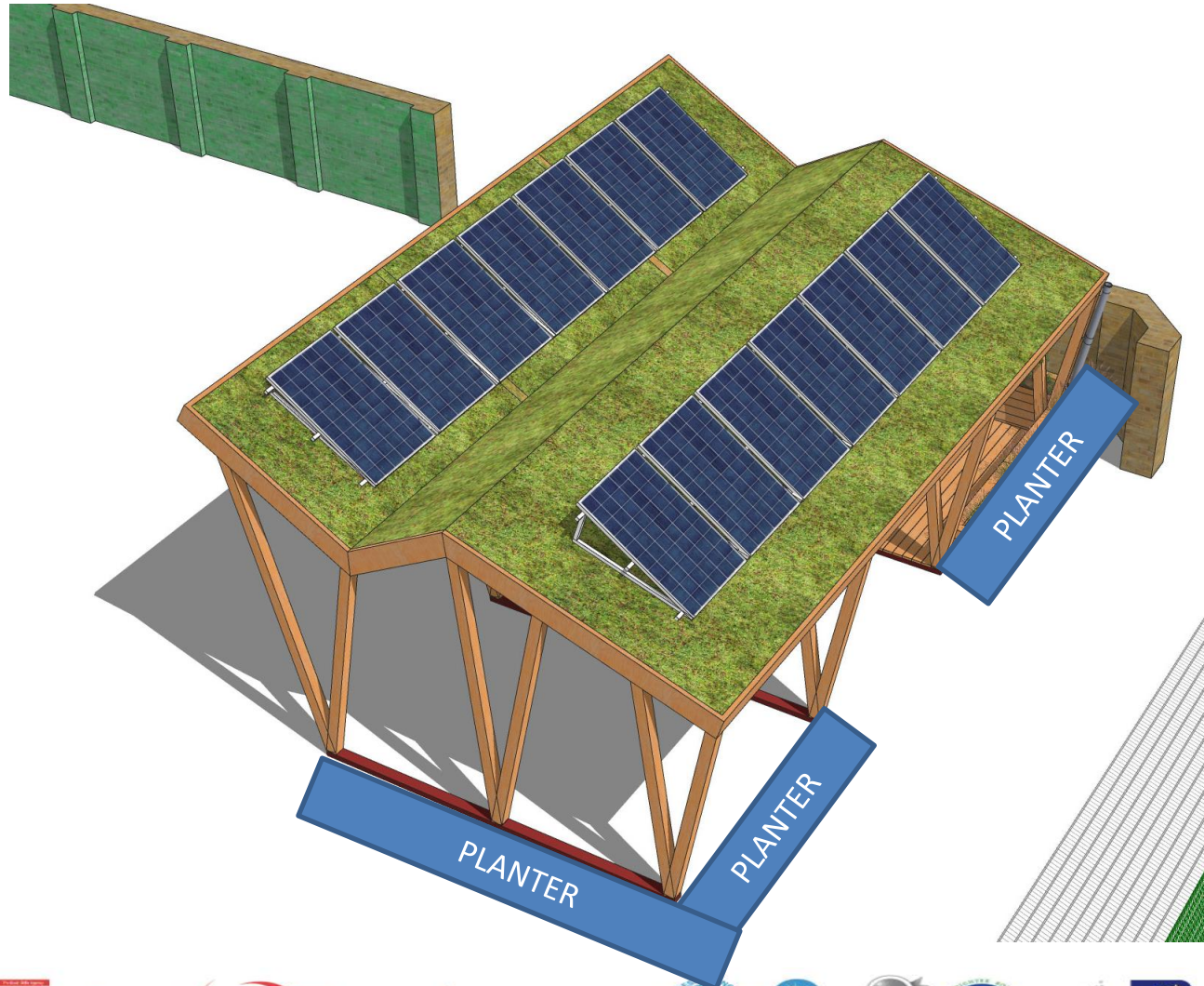
## Playground space (Pagoda P)





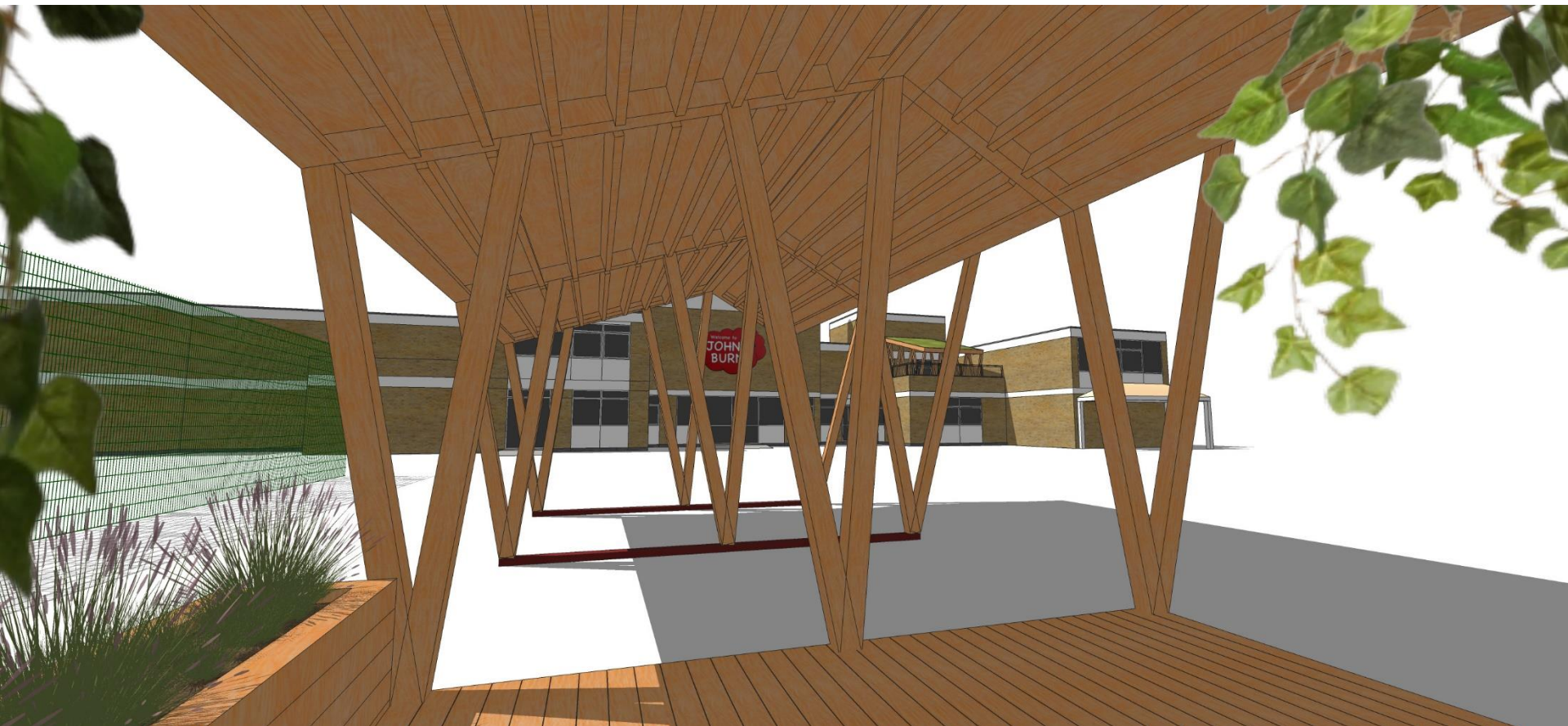


## Playground space (Pagoda P)





## Playground space (Pagoda P)





## Playground space (Pagoda P)

### DESIGN QUESTIONS:

- Size (10x5m)? **Yes as shown.**
- South or east facing roof? **South-facing.**
- Feet bolted to playground, or cross-bars? **Cross-bars, with extra area of decking at west end, so that two of the three sections are decked**
- Flatter slope/middle tier? **Keep as is.**
- Position of planters? **Remove planter from beside wall. Include two planters along south side, beside decked areas, and planter along west side (as shown in slide 7)**
- Climbing plants on east/south/west sides? **Yes, to be planted by school.**
- Bench seating on back of planters? **Yes.**
- Stage, incl. steps/height? **Decking at height shown, not raised, but both end sections are decked.**
- Watering cans or water wheels on downpipes? **Scot to consider options.**



### FOR DAVID:

- Depth/makeup of substrate? **As for balcony pagodas.**
- Angle of roof for best water retention? **Keep as is.**
- Baffles across slope? **David/Scot to discuss.**
- Permatex/blue roof? **David to advise, either in base of roof or under decking.**
- Size of planter(s) HxWxD? **600mm width minimum.**
- **Type of vegetation? School to plant up planters.**
- Planting schema around/below panels? **David/Duty to advise.**
- Where should planters discharge to? **David to advise.**