



SWMP Call for Projects Launch: How to Apply

Eva Linnell – Programme Manager

Agenda

- SWMP and Strategic Context
- Call for Projects
- Project Examples
- Questions
- Summary

Why is this of interest?

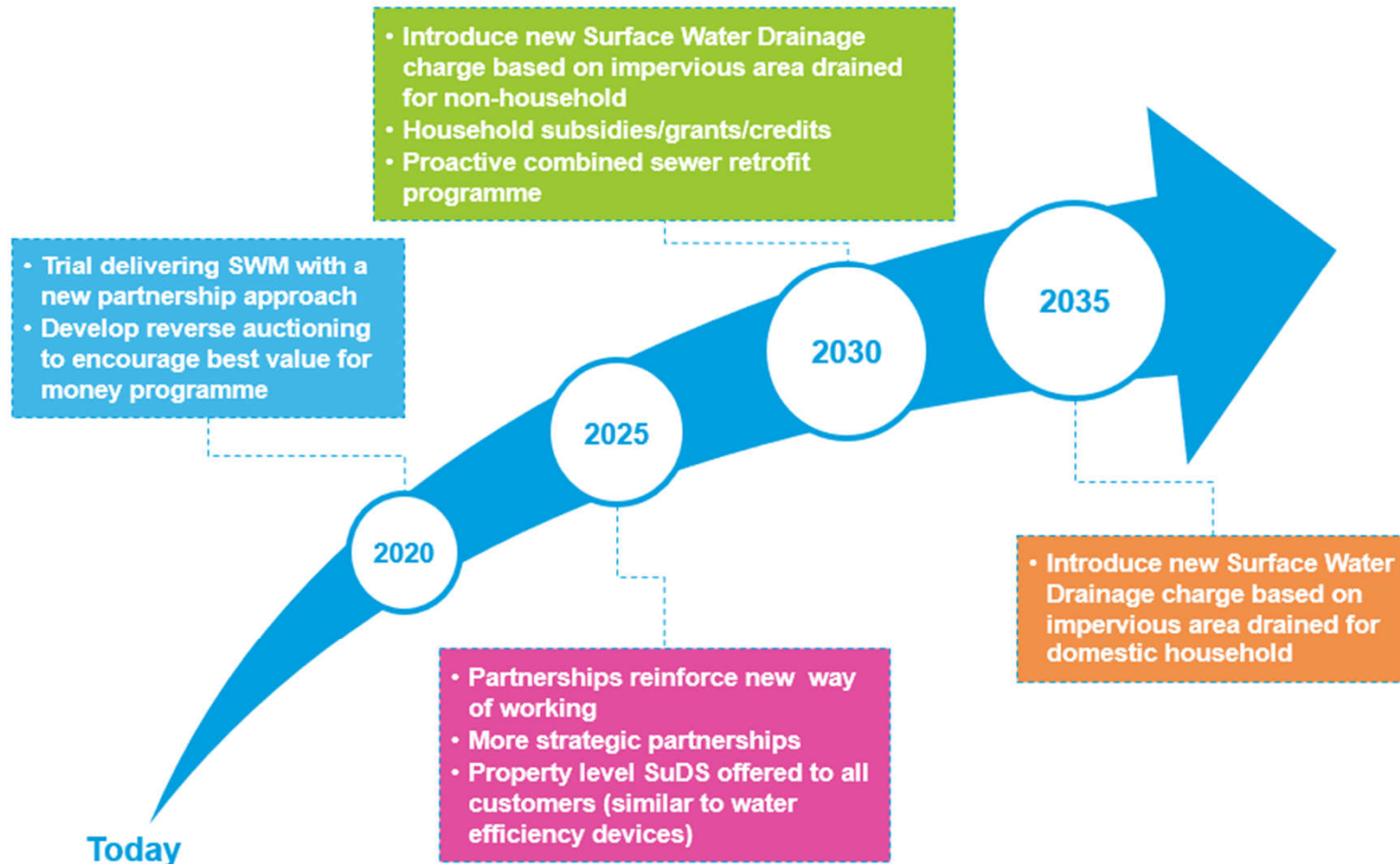
- Access funding for SWM projects
- Share knowledge and experience of SuDS implementation





Surface Water Management Programme Strategic Context

Long Term Surface Water Management



Source: Beech T(2019) Presentation to Strategic Partners, Thames Water

We have set ourselves an ambitious Vision for 2050, which will deliver significant economic, social and environmental benefits

Water

Solve water scarcity and develop a resilient network for our customers that avoids supply interruptions and leaks

- Guarantee an uninterrupted service with leakage % in single digits
- Guarantee high quality drinking water
- Eliminate all lead pipes
- Enable customers to reduce average water consumption by ~30-40% (PCC under 110l/d)
- Secure sufficient water supply to meet future demand without damaging environmentally sensitive sources

Waste and Rivers

Prevent all sewer flooding and wastewater pollution; lead the wider effort to restore our water courses

- Eradicate sewer flooding, especially in homes, gardens and businesses, including stopping 'unflushables'
- Build resilience against stormwater to stop all pollutions, sewage overflows, and sewage spills into rivers, across the entire network
- Lead the improvement of the environment and cleanup of rivers in our region to become among the healthiest in the UK
- Support efforts to reduce damaging river flooding

Customer

Deliver great service and value for all customers, build passion for water saving and cleaning up waste

- Provide an effortless service that is personalised and digitally enabled
- Fix service issues the same day
- Keep bills low vs incomes and show that our services are value for money
- Motivate customers to adopt efficient appliances and digital tools to save water and waste
- Treat everyone who consumes our services as a customer and partner with others (retailers, NAVs, property developers, etc.) to reach them
- Continuously evolve the customer service experience, embracing digital innovation, partnering with new market entrants and adapting to changing consumption patterns

Energy Transition

Maximise the green energy we produce for ourselves and local communities

- Achieve our net-negative carbon strategy
- Become a major producer of green energy using multiple technologies, creating 3 TWh+ production
- Drive the energy transition beyond the Thames' footprint, building specialist businesses where we have competitive advantage, and ensuring our supply is truly renewable

Communities Impact

Be a force for good: eliminate water poverty, lead in re/up-skilling communities and develop land assets responsibly

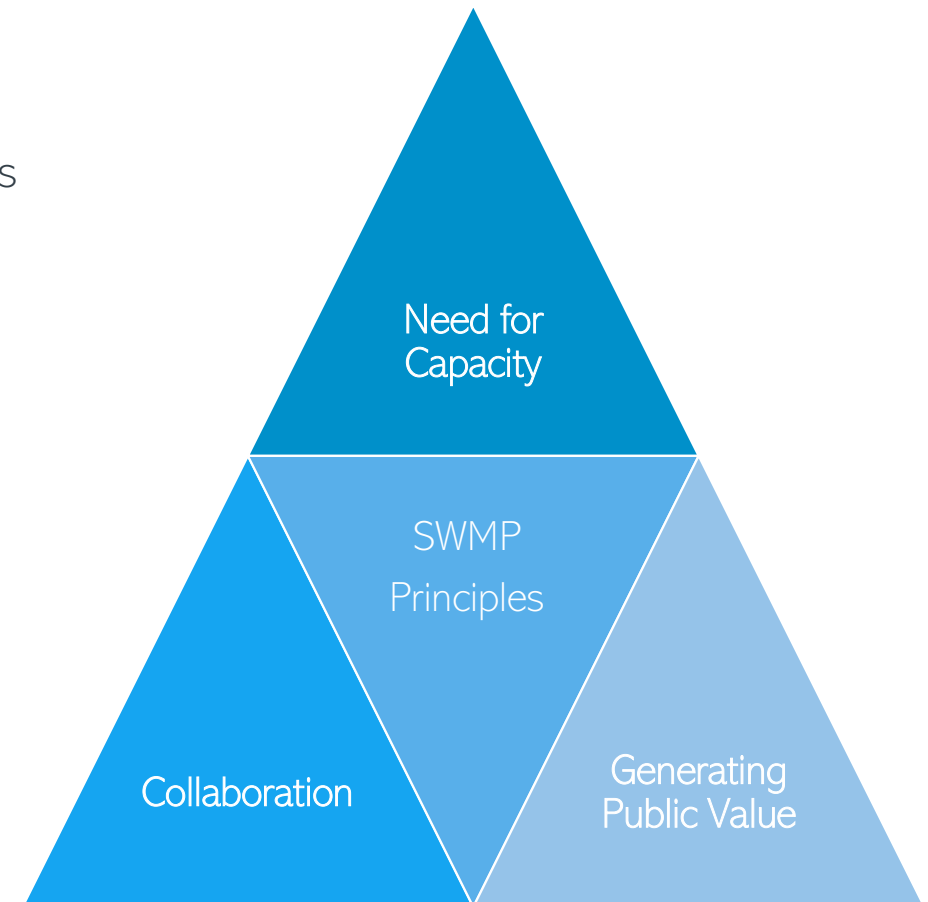
- Provide inclusive service and ensure water is affordable
- Create attractive and diverse employment opportunities; drive change in our supply chain and beyond
- Take leading role in re-/upskilling our communities
- Implement a balanced land-use strategy, delivering investment, local jobs, biodiversity gain and access to nature-based recreation
- Deliver property-related projects with inherent sustainability and social value to address societal issues such as affordable housing

Customer Expectation and Industry Leadership



AMP7 Surface Water Management Programme (SWMP)

- Follows the “20 for 20” Surface Water Programme in AMP6
- Aims at disconnecting or redirecting surface water through [Sustainable Drainage Systems](#) from Thames Water’s Networks
- Three fundamental [delivery principles](#)
- Three project workstreams:
 1. Strategic Partnership- [Hounslow BC](#), [Lambeth BC](#), [Tri-Authority Partnership](#) (Oxfordshire, Cherwell & Vale of White Horse Councils)
 2. Third Parties- [Local Authorities](#), [Governmental Organizations](#) (e.g TfL, DfE etc.), NGOs
 3. Thames Water Led



Programme Improvements

- Programme Improvements for AMP7
 - Dedicated SWMP team: Eva and Marta
 - Transparency of decision making and scoring
 - Thames Water Steering Group
 - Reduced governance and time to approve projects
- This round of applications:
 - Simplified Application Form
 - Clearer scoring criteria





Call for Projects

Who is this for?

- You are a:
 - public body, including local councils
 - not-for-profit organization
 - company or other business
 - school
- You will complete a project that will divert rainwater away from a Thames Water sewer, (or store water for a time before releasing)
- Your project will be completed and operational by March 2025
- You have a plan for maintenance (including funding)



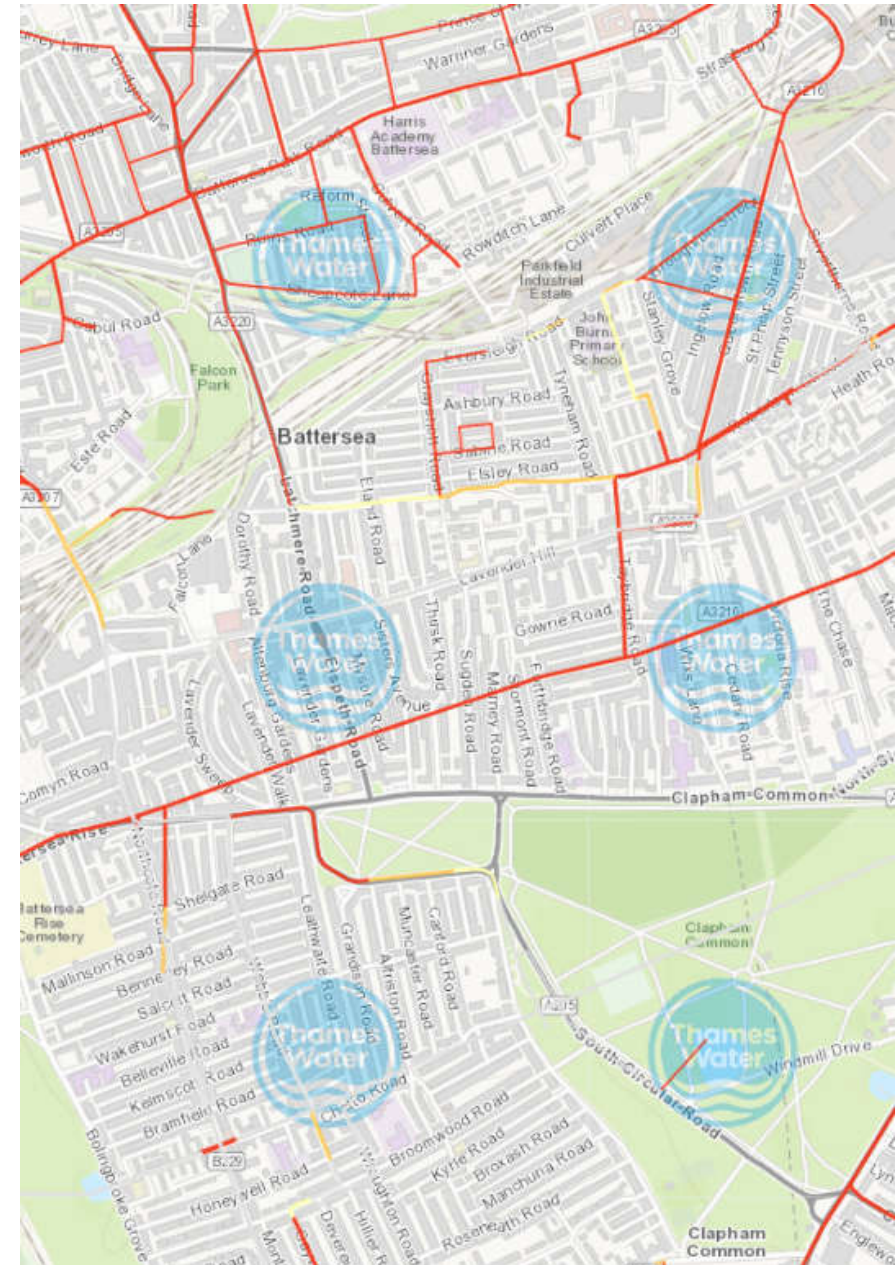
What does a successful application look like?

- Addresses a clear need for capacity in the sewer
 - Pollution
 - Flooding
 - Sewer Capacity (refer to DWMP portal)
- Types of solutions that score well:
 - Blue Green preferred over Grey
 - Water reuse and Disconnection favoured over Attenuation
- Costs:
 - Applications for £5k - £250k
 - Cost effectiveness: less than £75 per m² effective area removed
 - Joint funding preferred



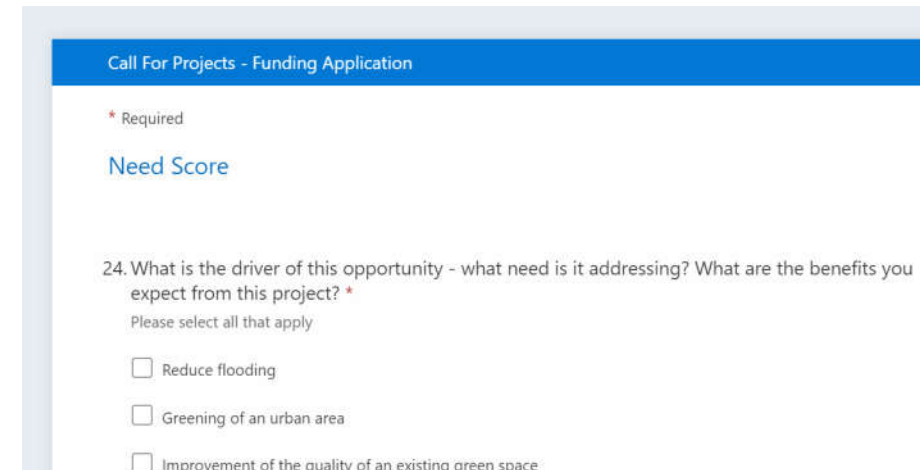
What is likely to score well?

- Evidence base:
 - Sewer Connectivity
 - Flood records – ensure flooding has been reported to Thames Water
 - DWMP (Drainage and Wastewater Management Plan), combined and foul sewers only
- Single option, well defined
 - Not multiple options
 - If you have multiple schemes: please select the scheme with the greatest need and beneficial cost



How to Apply and Timeline

- All the details are available online: www.thameswater.co.uk/suds
- Contact us to discuss your scheme before submitting
- Submit an application form by Monday 25th April
 - Send supporting document to: swmp.applications@thameswater.co.uk
 - No further project calls planned this AMP
- Business cases will be presented to the Steering Group for approval on 9th June
- Approved schemes:
 - Provide final scheme details
 - Agree payment milestones
 - Sign legal agreement



Call For Projects - Funding Application

* Required

Need Score

24. What is the driver of this opportunity - what need is it addressing? What are the benefits you expect from this project? *

Please select all that apply

☐ Reduce flooding

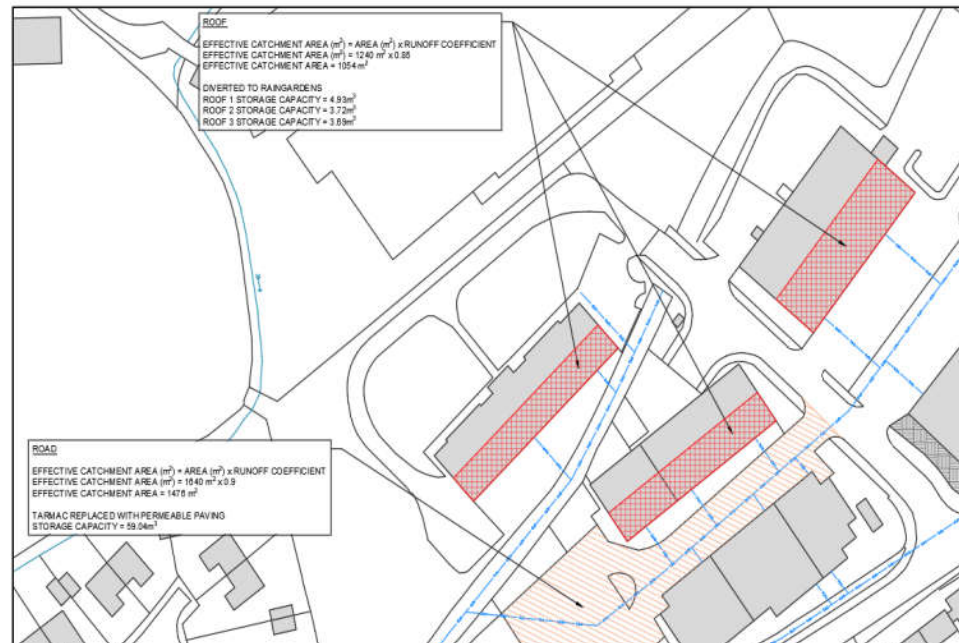
☐ Greening of an urban area

☐ Improvement of the quality of an existing green space

Grants Guidance Document

All the details are available online:

www.thameswater.co.uk/suds



Funding Application Guidance

AMP7 Surface Water Management Programme

Summary of Thames Water Funding Sources

Fund Name	Funded by	Eligibility	Funding Amount	Other comment	Link
SWMP	Thames Water	Impermeable area is removed or attenuated from TW sewer	£5k - £250k	Max £75 per m ² area removed	Surface Water Management Programme
Grow Back Greener	Mayor of London, GLA and Thames Water	London area	£10k - £75k	Next round: mid 2022. Two themes: access to green space; climate adaptation & water	Grow Back Greener
Smarter Water Catchments	Thames Water	Crane, Evenlode and Chess catchments only		No current call, but will be future funding opportunities	Smarter Water Catchments
Small charitable grants programme	Thames Water	Across the TW area	Typically £1k - £5k	Meets criteria of water and health and/or water and the environment	Investing in our communities
<i>Schools Resilience Fund</i>	<i>DfE, GLA and Thames Water</i>	<i>Schools in the London area - top 100 flood risk</i>	<i>~£15k per school</i>	<i>All schools have been contacted</i>	<i>N/A</i>



SWMP Project Examples

Project Example – Heathbrook Primary School

Need

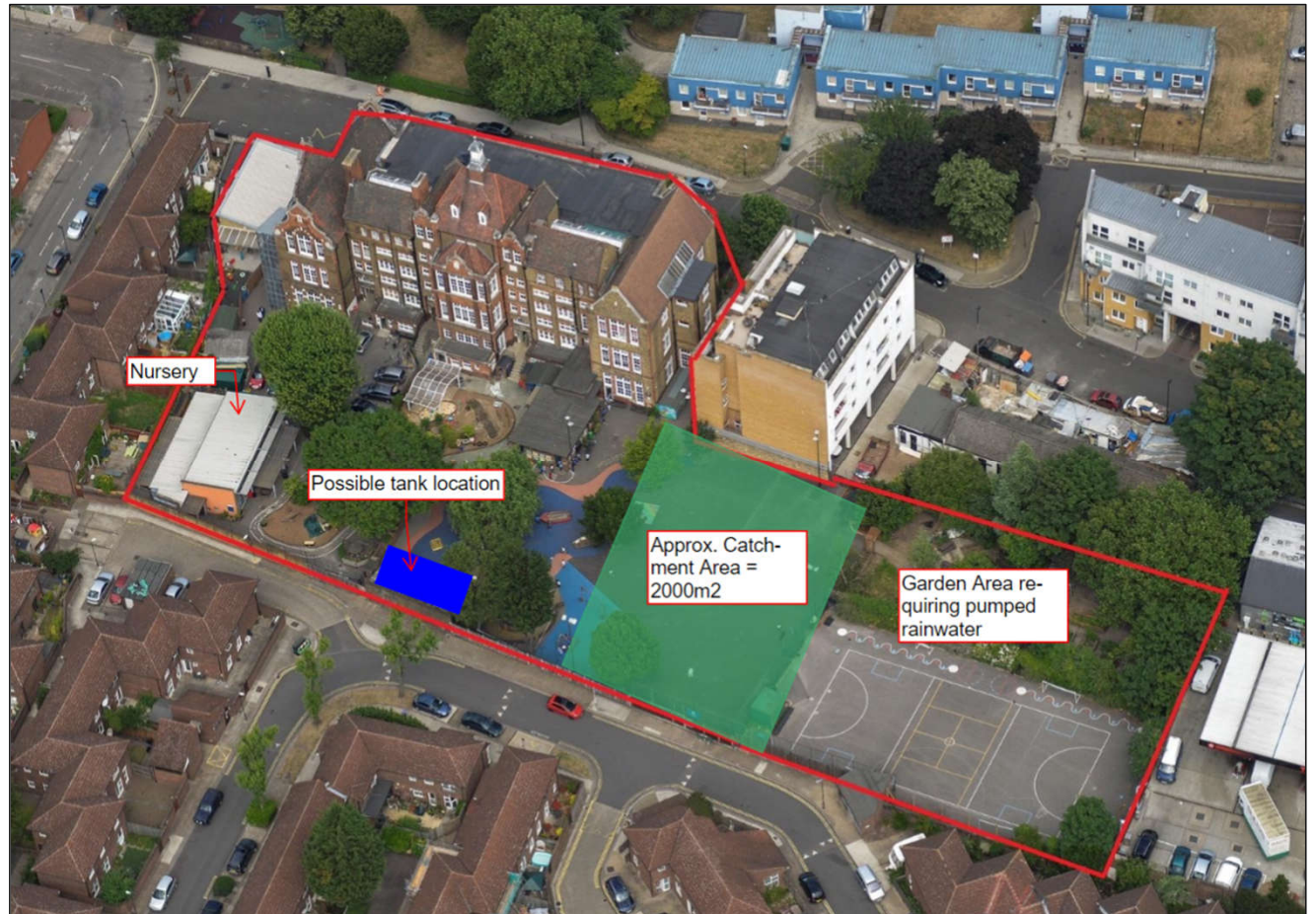
- Combined Sewer
- Need for capacity – DWMP CAF
- Not confirmed SFHD flooding

Solution

- Outline design
- Education setting
- Collaboration: co-funded by DfE
- Green and Grey with water re-use
- Reduction of water usage

Cost

- ~£300k per hectare (£30 per m²)





Online Events

Online Events

Call for Projects - How to Apply

- Monday 14th February, 1pm
- Wednesday 2nd March, 3pm

Wetlands and Ponds – Ian Russell, Enfield

- Wednesday 9th March at 1pm

Housing Estates - David Ifould, Groundwork

- Monday 14th March at 1pm

SuDS in Schools - Daniel Johns & Paul Wyse

- Monday 28th March at 1pm

GLA: SuDS in London - Holly Smith, GLA

- Thursday 31st March at 1pm

Highway SuDS – Kayan Cheng, Hackney

- Thursday 31st March at 1pm





Questions?

Eva Linnell & Marta Chudzio
swmp.applications@thameswater.co.uk

Summary

- Partnership working at the core of the Surface Water Programme - part of our long term strategy recognising the benefits of surface water removal
- Call for Projects now live – apply by 25th April
www.thameswater.co.uk/suds
- Join us for our online events series throughout March

swmp.applications@thameswater.co.uk





Thank You!

Eva Linnell & Marta Chudzio
swmp.applications@thameswater.co.uk