



# Groundwater Impacted System Management Plan

Milton-under-Wychwood, River Evenlode

April 2021



Version control

Version	Date	Amendment	Author	Checked	Reviewed
1-d1	March 2021	Draft for EA	DJ	SE	APH
1-V1	April 2021	Version 1	DJ	APH	JO
1-V2	July 2021	Update to introductory text and infiltration potential figures	DJ	APH	JO
1-V3	July 2021	Update to infiltration potential figures	DJ	APH	JO
Annual Update 2022	October 2022	Annual Update 2022	MB/JH	DJ	DJ
Annual Update 2023	October 2023	Addition of Annual Update 2023	MB	DJ	DJ
Annual Update 2024	October 2024	Addition of Annual Update 2024	CW/MW	DJ	DJ
Annual Update 2025	Nov 2025	Draft for EA	AF and PP	BT and JE	MH DS

# Table of contents

Introduction	5
Brief description of the Milton-under-Wychwood system	7
Problem characterisation	7
Anticipated unavoidable discharges	9
General outline plan & timescale	13
Milton-under-Wychwood Infiltration Management Plan	13
High level approach statement	13
Investigations	15
Monitoring	15
Mitigation and Updates	15
Appendix	16
Investigations & remedial work undertaken since 2019/20 and future plans	17
Addendum - Annual Update 2022	19
Addendum - Annual Update 2023	28
Addendum - Annual Update 2024	37
Addendum – Annual Update 2025	45



# Introduction

This document sets out Thames Water's approach to the management of groundwater infiltration in sewerage systems where the influence of groundwater infiltration is viewed as significant likely leading to the sewerage system, on occasions, to become overwhelmed.

All sewerage systems combined and separate will experience some groundwater infiltration<sup>1</sup> and a nominal allowance in design will be made for this. However, in some catchments the impact of groundwater infiltration can be considerable leading to impacts on service during periods of high groundwater, typically during the winter.

Groundwater can enter the sewerage system through the pipes and manholes, this may occur at a defect (crack, hole, displaced joint) or on a normal joint on the sewer or in the manhole. A key point to note is that where infiltration occurs it is not necessarily an indicator that the sewer is in poor structural state simply that jointing techniques used are not completely watertight.

Ingress of groundwater is not limited to the public system that Thames Water owns and maintains but potentially the private drains, manholes and sewers that connect to our system.

Preventing and reducing the impact of groundwater infiltration is predominately achieved through the lining of sewers and

sealing of manholes. This entails the application of a synthetic liner within the pipe that creates a contiguous membrane for the length of the pipe or possibly section if the source of ingress can be narrowed down. For manholes it will typically entail sealing in a similar manner.

To line all sewers and manholes within most catchments would be prohibitively expensive to do so. Our approach to date has been centered on a 'find and fix' basis which has involved monitoring and investigating the networks in periods of high groundwater to identify sources of ingress and fix as we find them. This approach is constrained for the reason that investigations are typically limited to periods of high groundwater and when high groundwater occurs there are limited windows of time in which investigations can be successfully undertaken before flows either subside or the system is fully surcharged meaning CCTV surveys are not possible<sup>2</sup>. Once sections of sewers have been lined, it will be a case of waiting until high groundwater levels reoccur to assess the effectiveness of the work undertaken, which may not be the subsequent winter but several years later.

It is recognised that the find and fix approach to date lacks a degree of certainty of resolution and for this reason Thames Water in 2020 undertook a different approach for long term management of groundwater, which is covered within this

<sup>1</sup> Sewers for Adoption makes an allowance for 10% of peak wastewater flow to allow for unaccounted flows such as groundwater infiltration.

<sup>2</sup> On occasions it is possible to over-pump between manholes to isolate sections of sewer to survey, this is not always feasible when the flows involved are simply too great to over-pump or the location prohibits this approach.



document under the plan section. These plans require significant investment which Thames Water will seek to secure through the price review process as service enhancement. In the meantime, we will continue to investigate sources of infiltration when it occurs and where feasible, undertake the work through our capital maintenance budgets. We refer to these as 'minor works' opportunities i.e. where we have high degree of certainty of reducing point sources of infiltration and can do so with reasonable costs and time.

The structure of this document has been created with input from the Environment Agency. Sections covered in this document include our 'Outline Plan' with timescales, Mitigation i.e. how we intend to manage the risk until our plan is fully implemented and when we will publish future updates on progress against this plan.

## Brief description of the Milton-under-Wychwood system

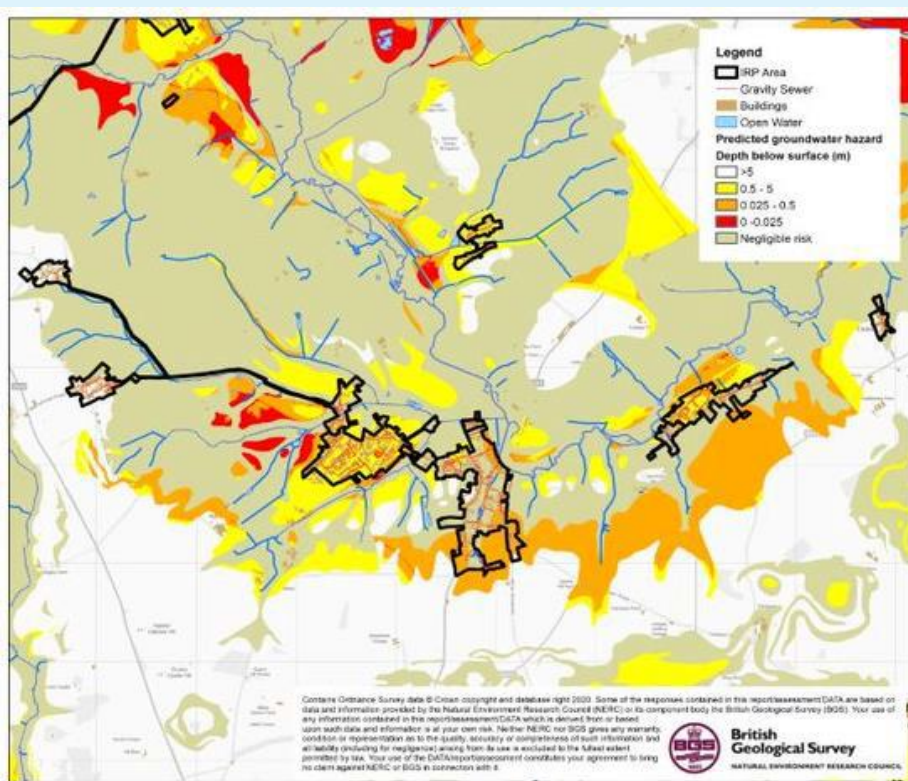


Figure 1.0 – Milton-under-Wychwood catchment

The Milton-under-Wychwood system lies on the River Evenlode, in Oxfordshire, England, approximately 11km north west of Witney. The Milton-under-Wychwood system serves a population equivalent<sup>3</sup> of 4,183 with a predominantly separate sewerage network totaling some 42km in length excluding private drains and sewers. The extent of the catchment is shown in Figure 1.0 above and includes the villages of Idbury, Fifield, Milton-under-Wych-wood, Shipton-under-Wychwood, Lyneham, Ascott-under-Wychwood and Chilson.

### Problem characterisation

Groundwater has potential to enter our sewers when levels are high which reduces their capacity and increases their risk of the network becoming overwhelmed. There's a strong link between the rising river levels (in the River Evenlode) that cause rising groundwater levels, and the drainage issues some of our customers have experienced.

<sup>3</sup> Population equivalent based on unit per capita loading (PE), in waste-water treatment is the number expressing the ratio of the sum of the pollution load produced during 24 hours by industrial facilities and services to the individual pollution load in household sewage produced by one person in the same time.

In recent years the foul sewerage system in the Milton-under-Wychwood catchment has become overwhelmed, following prolonged and heavy rainfall and raised groundwater levels. This has resulted in some properties suffering from sewer flooding and restricted toilet use. The sewerage system is identified on the public sewer records as being a separate foul system, rather than a combined system. It should therefore, in theory, only be accepting foul drainage rather than a combination of foul and surface water, however, there are almost no areas in the system with public surface water sewers.

We believe that the system has likely surcharged due to a combination of unwanted flow into public sewers and private drainage, surface water misconnections (i.e. down pipes from roofs), volumes of run off from surrounding saturated fields, inundation from overloaded highway drains and public spaces and river water overflowing from the River Evenlode. Pumping station run time data sets indicate evidence of groundwater infiltration in the network but also high storm responsiveness indicating surface water connections upstream.

The root causes of sewer surcharges and STW performance issues are therefore numerous and resolution of issues complex, requiring all stakeholders responsible for drainage in the catchment to work together to resolve them.

The Flood and Water Management Act 2010 places a responsibility on Lead Local Flood Authorities (LLFAs), to manage flood risk from surface and groundwater, plus a duty on all Risk

Management Authorities (RMAs), to cooperate regarding flood risk. In our role as an RMA, Thames Water will work with Oxfordshire County Council as Lead Local Flood Authority, County Council and West Oxfordshire District Council as planning authority, and the Environment Agency to ensure that a collaborative approach can be developed to address the problems.

Thames Water also has a statutory obligation to comply with environmental legislation. The Water Framework Directive establishes a strategic approach to managing the water environment, which the Environment Agency achieves through River Basin Management Plans and setting environmental objectives for groundwater and surface water. The environment is also protected from adverse effects of discharges of urban wastewater through the Urban Wastewater Treatment Directive, which requires us to improve and extend the sewerage system according to section 94 of the Water Industry Act (1991).

A number of our sewerage systems include for permitted overflows, these structures are there to protect against sewer flooding as a result of rainfall or equipment failure where appropriate. Discharges from these structures should not be impacted by excessive infiltration as detailed by the EA Regulatory Position statement on groundwater impacted sewerage systems.

The impact of the unwanted flows and surface water flows in the catchment has overloaded the gravity sewers, sewage pumping stations in the system and the STW; which has also impacted the performance of the STW.



Our permit conditions for Milton-under-Wychwood STW state: *"A discharge from the storm tank shall consist of storm sewage effluent resulting from rainfall or snowmelt"*

There is some correlation between flows arriving at the works and river levels within the catchment. This is not indicative or evidence of a direct connection between the river and the sewerage system, simply that similar sources of flow are likely to be influencing both systems and hence helps to further our understanding of what some of the mechanisms might be leading to increased winter flows. We therefore have a perceived understanding of the possible root causes, which we are in the process of investigating, monitoring, and verifying over the forthcoming winter periods.

On occasions, where the incoming flow has exceeded treatment capacity for sustained periods, the storm tanks have become full and spills to watercourses have occurred.

#### Anticipated unavoidable discharges

Within recent years there have been unavoidable sewage escapes in the network as a result of surcharging manholes causing pollution incidents.

We anticipate that this situation may continue until such time we are able to implement a long-term solution.

No mitigation in the form of temporary overflows has been undertaken in this system.

## General outline plan & timescale

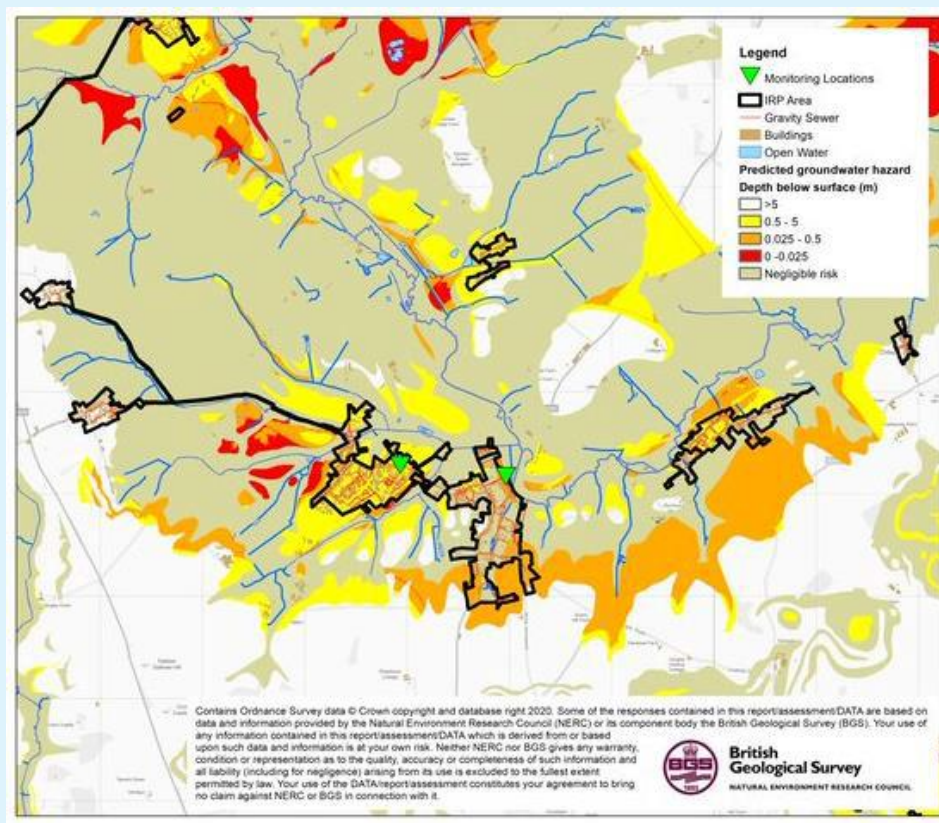


Figure 2.0 – Milton-under-Wychwood monitoring and infiltration zones

Key to bringing the impact of groundwater infiltration under control is an enhanced monitoring regime. We have identified and have installed several telemetered depth monitor locations around the Milton-under-Wychwood system – see Figure 2.0.

Complementing the flow [at the treatment works] and depth measurement [in the sewer network] we will use pumping station run time data, rainfall data, river level data, and groundwater level data to create a full picture of movement and source of flows around the catchment.

### Zones of Groundwater Risk

We engaged with JBA Consulting to develop plans for Milton-under-Wychwood that identify zones of groundwater risk, see Figure 2.0. These zones are modelled areas where the groundwater has been determined to be above the sewer and hence pose a potential risk for groundwater ingress.

The sewer depth monitors referred to earlier have been sited in and around these zones to verify and calibrate the risk in each of the zones.

If following the proposal to the sealing in part or wholly<sup>4</sup> of the high risk zones, should it be required, the system is found to be still experiencing excessive infiltration we would then look to potentially seal ‘private’ laterals and/or drains along with starting to seal the medium to low risk zones.

This document sets out an unconstrained approach to resolving the impact of groundwater infiltration within the system.

Investment to address infiltration will be assessed and prioritised against other drivers e.g. STW upgrades, both in the catchment and across the region at each price review.

With this plan we remain committed to minimising the impact of groundwater on the sewerage system in Milton-under- Wychwood.

Our general medium to long term plan is therefore to apply a hierarchy to sealing the sewer as follows:

Activity	When	Description
Model Zones	2020	JBA have been engaged to undertake modelling activities to identify the areas to be targeted for sealing in the 56 systems in the Thames Water region identified as being impacted by infiltration.
Install monitors	2020-2023	Further monitors have been installed in the zones to help calibrate and validate the zones. Each year completeness / coverage monitors will be reviewed and added to / or modified, as necessary.
Calibrate zones	Refined each year	Following each winter, we intend to review the data from the monitors and if necessary, redefine the zones.
Look & Lift	Each winter	The look & lift surveys have two purposes, firstly to compliment the monitoring and secondly to identify ‘quick fixes’ that we would address through our normal capital maintenance.
CCTV	2020-2023	Required to confirm sewer condition and provide information to assist with costing any sewer lining.

<sup>4</sup> Decision of extent of sealing will be based on outcomes of works undertaken to date, result of monitoring and successful submission of our plans for investment.

Activity	When	Description
Minor works	2020-2023	As mentioned, if we detect minor works being required, we would look to resolve these as and when we find them.
PR24 / Price review	2023/24	Ideally through monitoring and on-going investigations work towards managing the infiltration risk, in AMP7, will be successful. However, in the absence of evidence justifying the need not to undertake sealing of the high-risk zone this is to be included as part of PR24 investment plan. This work will be subject to Cost Benefit Analysis and Best Technical Knowledge Not Entailing Excessive Cost (BTKNEEC) assessments.
High risk zone sealing	2025-30	Sealing of high-risk zone undertaken subject to need being demonstrated.

# Milton-under-Wychwood Infiltration Management Plan

As detailed above the impact of infiltration is experienced in the network and at the STW.

As part of our current investment plan, we have projects to increase the flow to full treatment at Milton-under-Wychwood STW. The main driver for the upgrade is growth, however the rate of maximum

observed infiltration is considered as part of the calculation for the new treatment flow rates. This work is programmed to be completed by 31/03/2025.

In the intervening period we intend to continue to monitor the network for potential sources of infiltration that may

improve the performance prior to upgrade of the sewage treatment works.

Our approach to the resolution of infiltration impacting the sewerage system is outlined below.

## High level approach statement

For the system our approach to tackling infiltration will be undertaken as follows:

1. We will investigate the network with a view to identifying sources of ingress of infiltration that are cost effective<sup>5</sup> to address. To investigate the network, we have:
  - Undertaken a desktop analysis to determine infiltration high to low risk zones (October 2020);

- Installed additional monitoring to back up the analysis and to aid focusing of locations for identification of infiltration (2020 to 2023). Each year we will assess the completeness of monitoring and if required add to or modify the current locations.

To further investigate the network, we will:

- Undertake sample CCTV in the high to low risk zones to assess the general asset health of the sewers and manholes.

We will also review any results of Winter 2019/20 and 2020/21 with historic data to build up evidence to support interventions in the network (Summer/Autumn 2021).

2. Where interventions can be undertaken as part of normal sewer maintenance activities these will be communicated and progressed.
3. If significant investment is identified as being required, then this will need to be considered in terms of relative need compared to other systems being investigated for infiltration reduction. However, where viable opportunities are identified these will be included in our AMP9 (2030-35) programme of investment. Significant investment needs may need to be included in our future investment cycles.

5 Assessment of cost effectiveness is based on assessment of the ratio of the cost of a solution to the monetised benefit gained from implementing the solution i.e. reduction in flood/pollution risk and/or reduced operating costs.



## Investigations

As mentioned above JBA Consulting have been supporting by undertaking an exercise involving assessing groundwater elevation data to determine which areas of the network are potentially below the groundwater table during high groundwater periods.

Site investigations, undertaken by Dene- Tech and our Customer Field Services (Thames Water Operations) will include 'look & lift' surveys, CCTV and where necessary dye tracing to confirm connectivity.

A table of any work undertaken is included in the appendix to this report.

## Monitoring

Sewer Depth Monitors were installed in the catchment in 2020 (see Figure 2.0). These devices are telemetered and provide real time data on the level of flow in the sewer.

The purpose of these units is to act as alerts for high groundwater impact in the sewer, calibration of the zones of infiltration risk and to demonstrate benefit gained from work undertaken to reduce infiltration.

These units will also provide evidence in the future of further need to manage the impact of infiltration.

## Mitigation

On occasions to avoid flooding of properties or to manage the risk of damage to the environment we may undertake tankering from (manholes) points on the network, make use of pumps to manage flows or deploy settlement tanks to part treat sewage before release to the environment.

With regard to the Milton-Under-Wychwood system we will continue to tanker where required .

## Updates

Work on the Groundwater infiltration management plan will continue, and we will provide updates in October 2022 and annually in October thereafter.

# Appendix

## Groundwater infiltration potential analysis

The table below presents a summary of the JBA groundwater infiltration analysis which identifies the sewers and manholes which are likely to be vulnerable to groundwater infiltration.

Sewer Length by Groundwater Infiltration Risk Zones

Risk category	Description	Length (km)	Percentage
High	Predicted groundwater extreme >1m above pipe invert	2.43	10.0
Medium	Predicted groundwater extreme 0-1m above pipe invert	2.46	10.0
Low	Predicted groundwater extreme 0-1m below pipe invert	4.49	18.3
Very Low	Predicted groundwater extreme >1m below pipe invert	15.12	61.7
Total		24.5 <sup>6</sup>	100.0

In addition, the table below presents the surface water flood risk classification for manholes within the catchment

Manholes by Surface Water Inundation Risk Category

Risk category	Description	Number	Percentage
High	Inundation risk in 3.3% AEP fluvial or pluvial event	70	7.9
Medium	Inundation risk in 1% AEP fluvial or pluvial event	32	3.6
Low	Inundation risk in 0.1% AEP fluvial or pluvial event	95	10.8
Very Low	All other manholes	685	77.7
Total		882	100.0

<sup>6</sup> Total of sewer length is for length of mapped sewers only and will not include unmapped S105a transferred sewers in all cases.

## Investigations & remedial work undertaken since 2019/20 and future plans

Lift and Look and CCTV surveys have not yet commenced in the Milton-under- Wychwood System. Our next update to the plan will include information on our progress in these areas.

## Glossary of terms

AEP – Annual Exceedance Potential

AMP – Asset Management Plan

CCTV – Closed Circuit Television

EA - Environment Agency

IRP – Infiltration Reduction Plans

MH – Manhole

STW – Sewage Treatment Works

WINEP – Water Industry National Environment Programme

# Addendum – Annual Update 2022 Table of contents

Overview	20
Hydrological Review – 2021-22	21
Network Performance	25
Investigations & Interventions	26
Summary	27

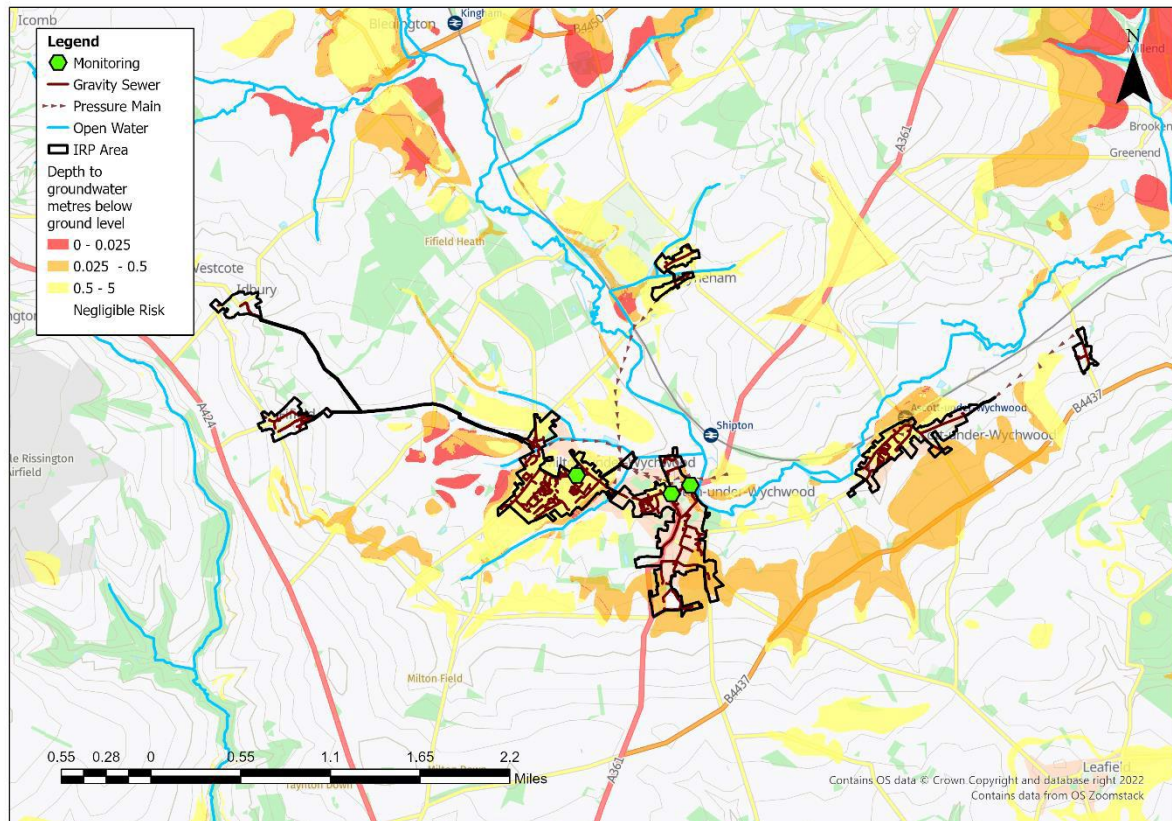


## Overview

This addendum to the Milton-under-Wychwood Groundwater Impacted System Management Plan 2021 (GISMP) provides an update on performance/work undertaken in the Hydrological Year October 2021 to September 2022. The key points covered include:

- Hydrological conditions
- How the sewerage system has performed over this period
- Mitigation / remedial measures progressed over the last year and being planned
- Summary and plan for 2022/23

Figure 1 – Milton-under-Wychwood Monitoring Plan



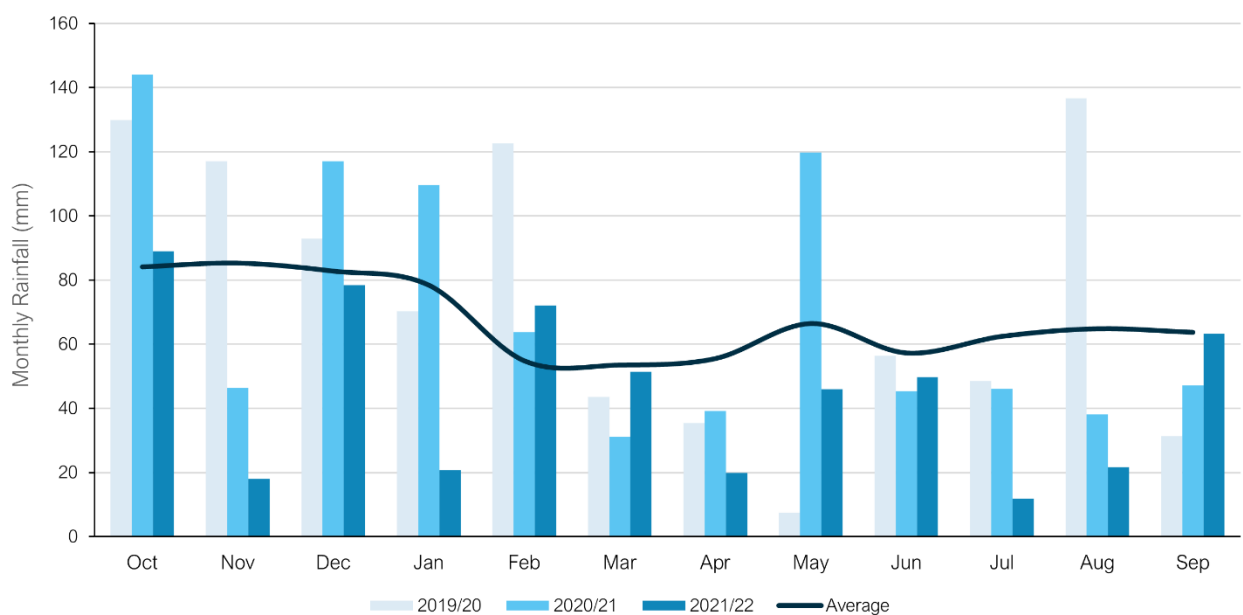
## Hydrological Review – 2021-2022

This section summaries the hydrological conditions within the Milton-under-Wychwood catchment within the period under investigation and provides comparison against previous year's performance to put the annual performance into context. The hydrological review has been undertaken based on the Hydrological Year which runs October 1<sup>st</sup> to September 30<sup>th</sup>.

### Catchment Rainfall

Representative Radar rainfall has been used to generate monthly data at catchment level for comparison with average data generated by local Met Office Weather Station Records. Figure 2 presents the comparison of this data for the last three hydrological years to support longer term trends within the local system.

Figure 2 – Monthly Rainfall Performance



Average Values taken from Met Office Weather Station at Little Rissington based on the period 1991-2020

The total rainfall for the 2021/22 hydrological year is 32% below the annual average total. Total rainfall values are presented in Table 3 below.

Table 3 –Total Rainfall Based on Hydrological Year

Average (mm)	2019/20 (mm)	2020/21 (mm)	2021/22 (mm)
810	892	848	550

### Groundwater / Local River Level

The Milton-under-Wychwood catchment is situated in the Cotswolds East water resources area. It primarily sits in the Charmouth Mudstone Formation of coarse to fine grained sediments forming interbedded sequences. This is not a designated principal aquifer within the UK.

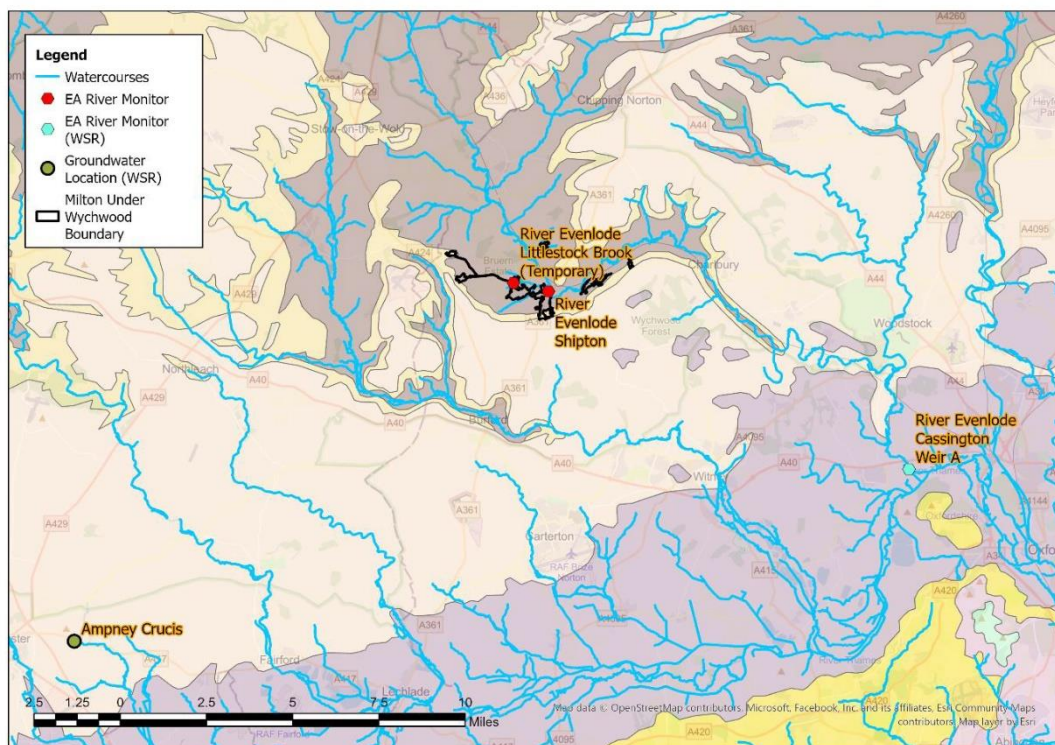
The Environment Agency has gauging stations on local watercourses measuring stage and observation boreholes measuring groundwater levels locally to the catchment which can be used to provide indicative local groundwater performance.

From previous investigations we have identified the following sites are good indicators of groundwater levels within the catchment.

- River Evenlode, Shipton.
- River Evenlode, Littlestock Brook.

These sites are illustrated in the figure below, alongside the closest groundwater reference station and closest gauging station from the Water Situation Report.

Figure 4 – Local Monitoring Stations



The following figures represent the last three hydrological years of level information at the indicator sites to build a picture of the relative conditions prevalent in the current year. It is presented against both the daily total rainfall values for the catchment and a rolling 15-day total rainfall.

Figure 5A – River Evenlode, Shipton

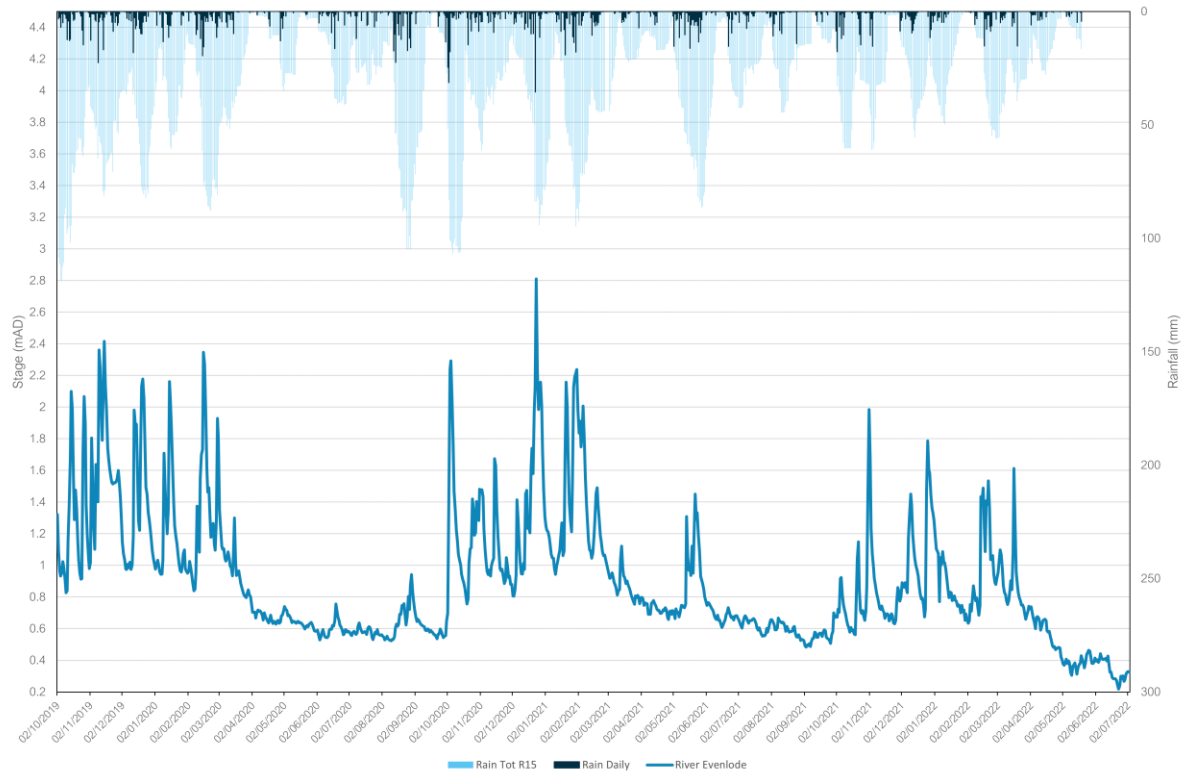
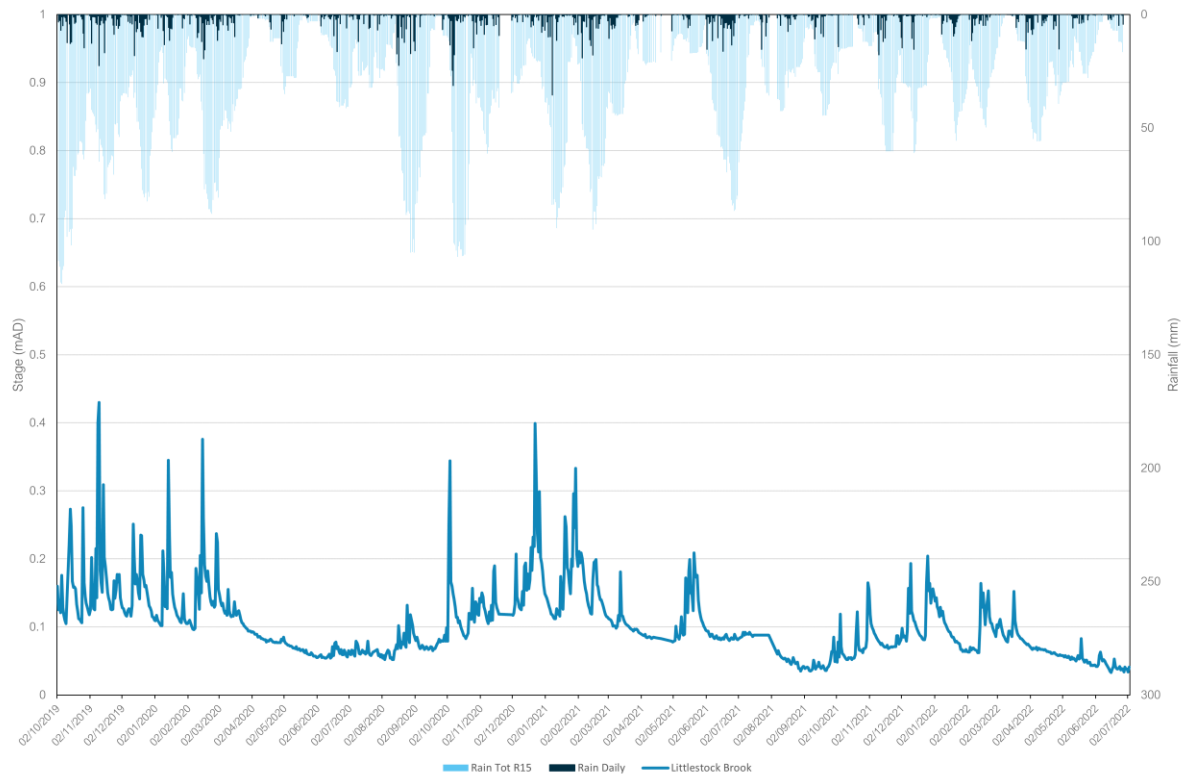
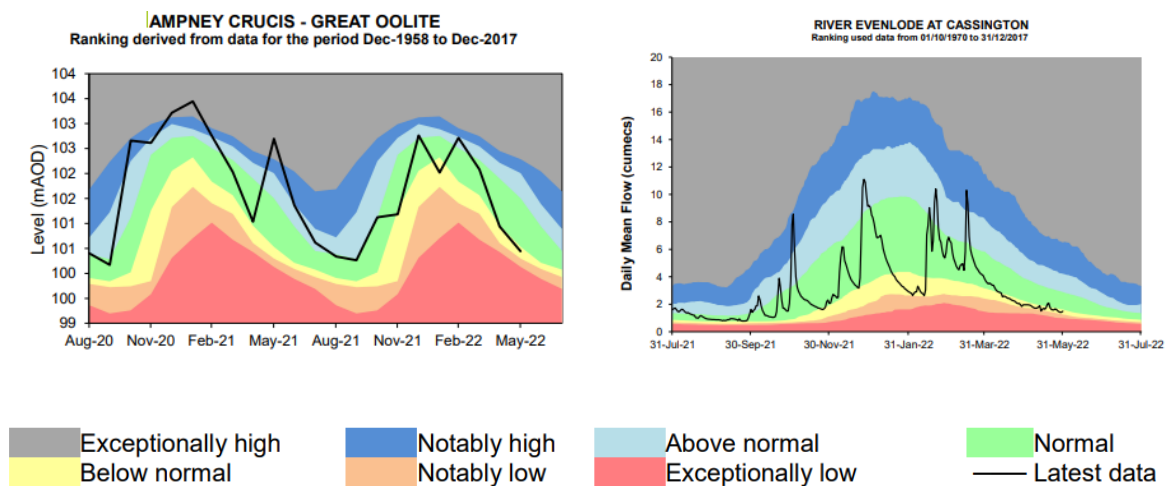


Figure 5B – River Evenlode, Littlestock Brook



In addition to these specific stations, the wider groundwater context is illustrated in the Water Situation Report for Cotswold East. The nearest groundwater reference station is Ampney Crucis. This site shows generally lower overall groundwater than the previous year, particularly evident during the winter months. This can be seen in the figure below alongside the river indicator location at Cassington on the River Evenlode.

Figure 6 – Water Situation Report



Extract from - [Water Situation Report \(publishing.service.gov.uk\)](https://publishing.service.gov.uk)



## Network Performance

Within the Milton-under-Wychwood catchment there is one site detailed within the Environment Agency Consents Database which has an Event Duration Monitor (EDM) fitted.

Table 7 below details the last 2 years performance of overflows within the catchment.

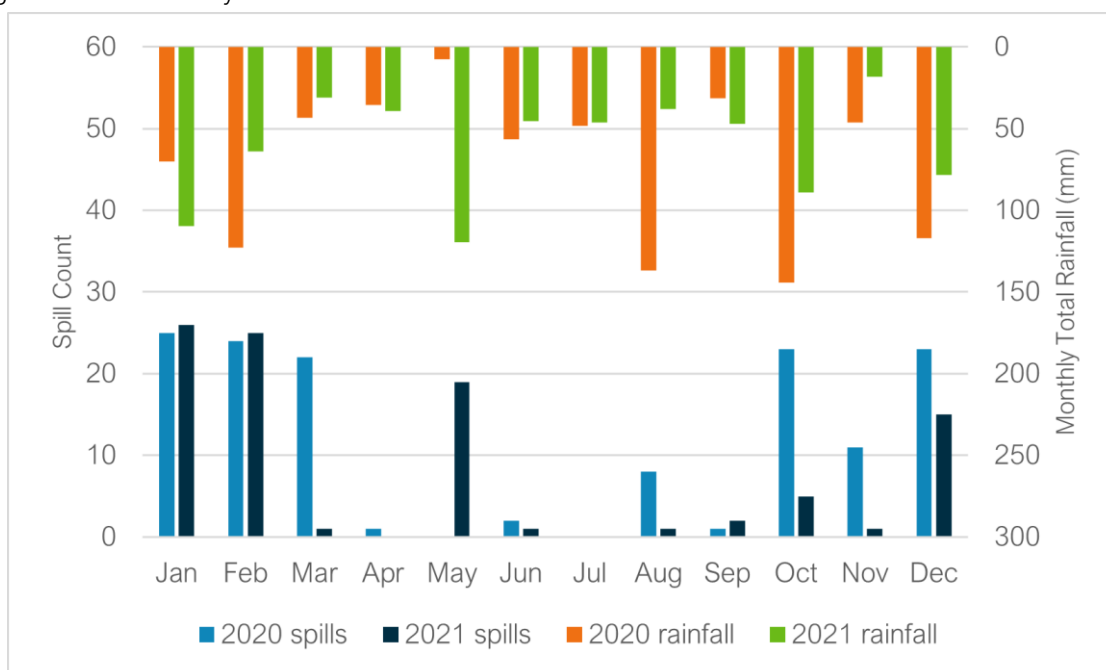
Table 7 – Event Duration Monitoring

Overflow	2020		2021	
	Spills	Duration (hours)	Spills	Duration (hours)
Milton-under-Wychwood STW	140	2060.72	96	1405.69

Note that a spill count of 140 is stated for 2020, which is lower than the published figure of 141. The spill count data has been revalidated/corrected and the revised figure of 140 will be included in the 2020 re-submission.

A critical part of the assessment of EDM performance and its relation to groundwater inundation is to review the month-on-month spill performance, against previous years and the monthly total rainfall values to give context to the performance. Figure 8 below presents the EDM performance trend and rainfall for recent years.

Figure 8 – EDM Monthly Performance



The trend in spill performance across the two recorded years does show variation in spills, with a focus on spills during the autumn and winter months. The data suggests a wider relationship between rainfall, elevated groundwater levels and spill frequency. A slower tail off in spills is evident within the first half of 2020, when the indicator sites suggest groundwater levels in the catchment were higher than within the first half of 2021.

## Investigations & Interventions

This section details the activities that have been undertaken within the catchment within the Hydrological Year 2021-22.

### Monitor Installations

The sewer depth monitor (SDM) programme supports long term groundwater understanding within GISMP catchments. Currently, there are a total of 3 monitors installed within the Milton-under-Wychwood catchment. There are currently no further monitor installs planned.

The data from these will be cross-referenced with other long-term records (where available) within the catchment.

### Remediation Works Undertaken this Hydrological Year

Table 9 below provides a summary of the investigations and remediation works undertaken or planned within the Milton-under-Wychwood catchment in the 2021-22 Hydrological Year.

Table 9 – Works Undertaken in the 2021/22 Hydrological Year

Investigation/ remediation type	Number/ length undertaken
CCTV survey	N/A
Look and lift survey	N/A
Sewer lining	N/A
Patch lining	N/A
Manhole sealing	N/A
Manhole sealing plates	N/A
Manhole covers and frames replaced	N/A

With the seasonal trends in groundwater being low in comparison with previous years, the larger scale survey, identification and remediation of the sewerage network has not been possible within the 2021/2022 hydrological year.

## Summary

Rainfall in the Milton-under-Wychwood catchment over the 2021/22 hydrological year has been below average, with groundwater levels in the aquifer beneath Milton-under-Wychwood not reaching the levels seen in previous years which triggered groundwater ingress into the sewerage network and elevated flow/depth readings at monitoring sites.

Lift and look and CCTV surveys will continue throughout the remaining wet winter periods with the aim of finding further priority locations for remediation and investigating/justifying the need for future larger scale lining as part of our Price Review (PR) process if required.

# Addendum - Annual Update 2023

## Table of contents

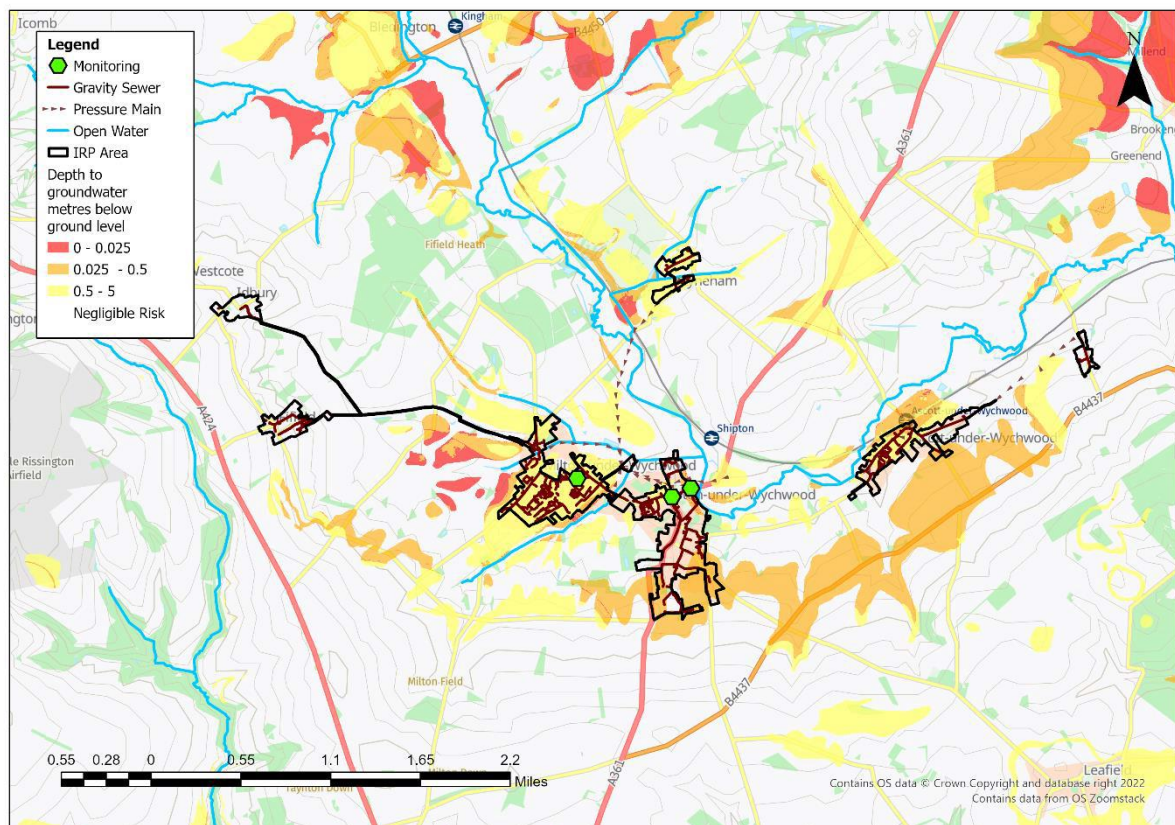
Overview	29
Hydrological Review – 2022-23	30
Network Performance	34
Investigations & Interventions	35
Summary	36

## Overview

This addendum to the Milton-under-Wychwood Groundwater Impacted System Management Plan 2021 (GISMP) provides an update on performance/work undertaken in the Hydrological Year October 2022 to September 2023. The key points covered include:

- Hydrological conditions
- Performance of the sewerage system
- Mitigation / remedial measures progressed over the last year and being planned
- Summary and plan for 2023/24

Figure 1 – Milton-under-Wychwood Monitoring Plan





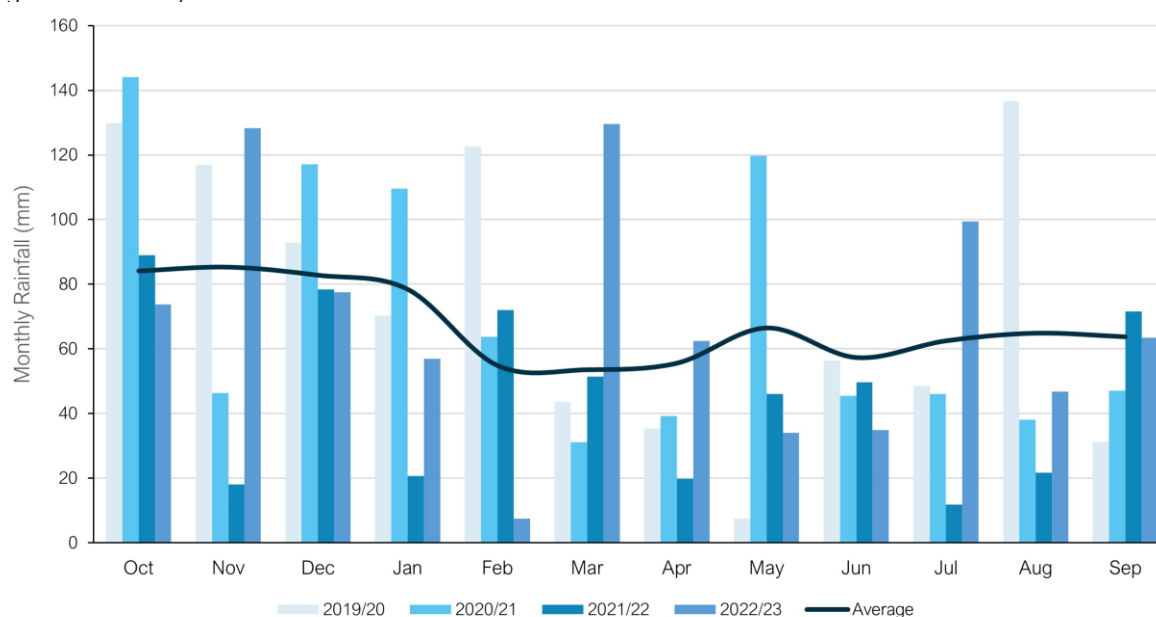
## Hydrological Review – 2022-2023

This section summaries the hydrological conditions within the Milton-under-Wychwood catchment within the period under investigation and provides comparison against previous year's performance to put the annual performance into context. The hydrological review has been undertaken based on the Hydrological Year which runs October 1<sup>st</sup> to September 30<sup>th</sup>.

### Catchment Rainfall

Representative Radar rainfall has been used to generate monthly data at catchment level for comparison with average data generated by local Met Office Weather Station Records. Figure 2 presents the comparison of this data for the last four hydrological years to support longer term trends within the local system.

Figure 2 – Monthly Rainfall Performance



Average Values taken from Met Office Weather Station at Little Rissington based on the period 1991-2020

The total rainfall for the 2022/23 hydrological year is 1% above the annual average total. Total rainfall values are presented in Table 3 below.

Table 3 –Total Rainfall Based on Hydrological Year

Average (mm)	2019/20 (mm)	2020/21 (mm)	2021/22 (mm)	2022/23 (mm)
810	892	848	550	815

## Groundwater / Local River Level

The Milton-under-Wychwood catchment is situated in the Cotswolds East water resources area. It primarily sits in the Charmouth Mudstone Formation of coarse to fine grained sediments forming interbedded sequences. This is not a designated principal aquifer within the UK.

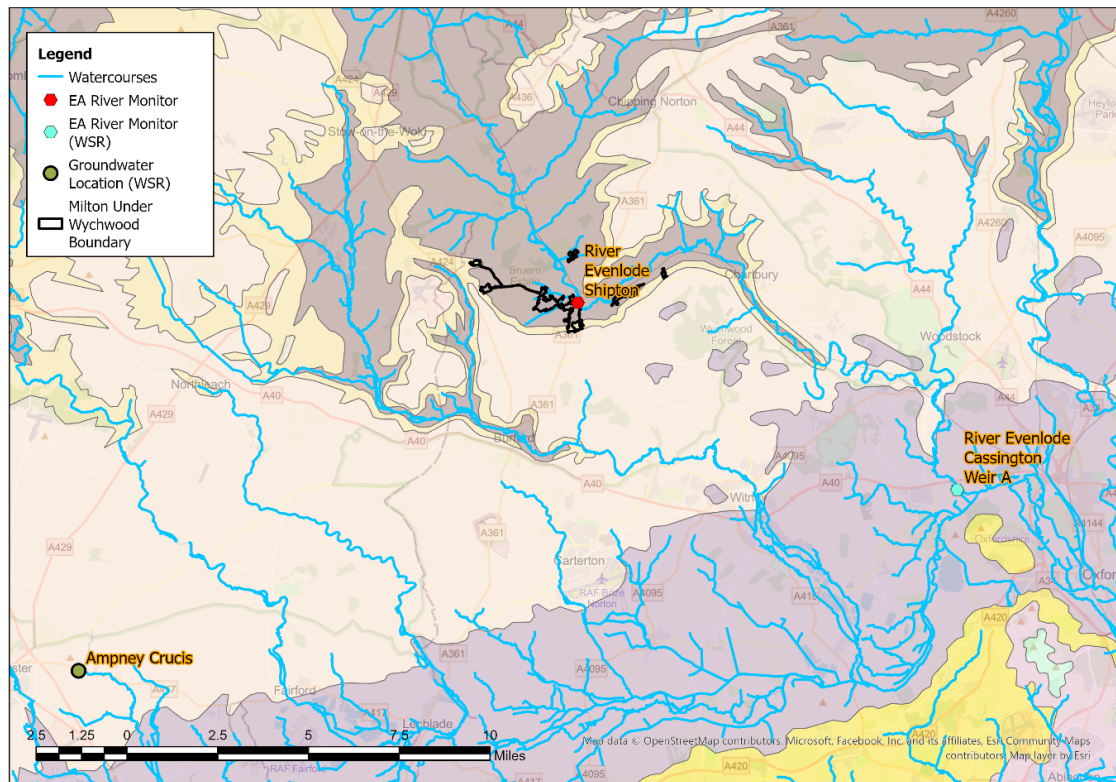
The Environment Agency has gauging stations on local watercourses measuring stage and observation boreholes (OBH) measuring groundwater levels locally to the catchment which can be used to provide indicative local groundwater performance.

From previous investigations we have identified the following site is a good indicator of groundwater levels within the catchment.

- River Evenlode, Shipton.

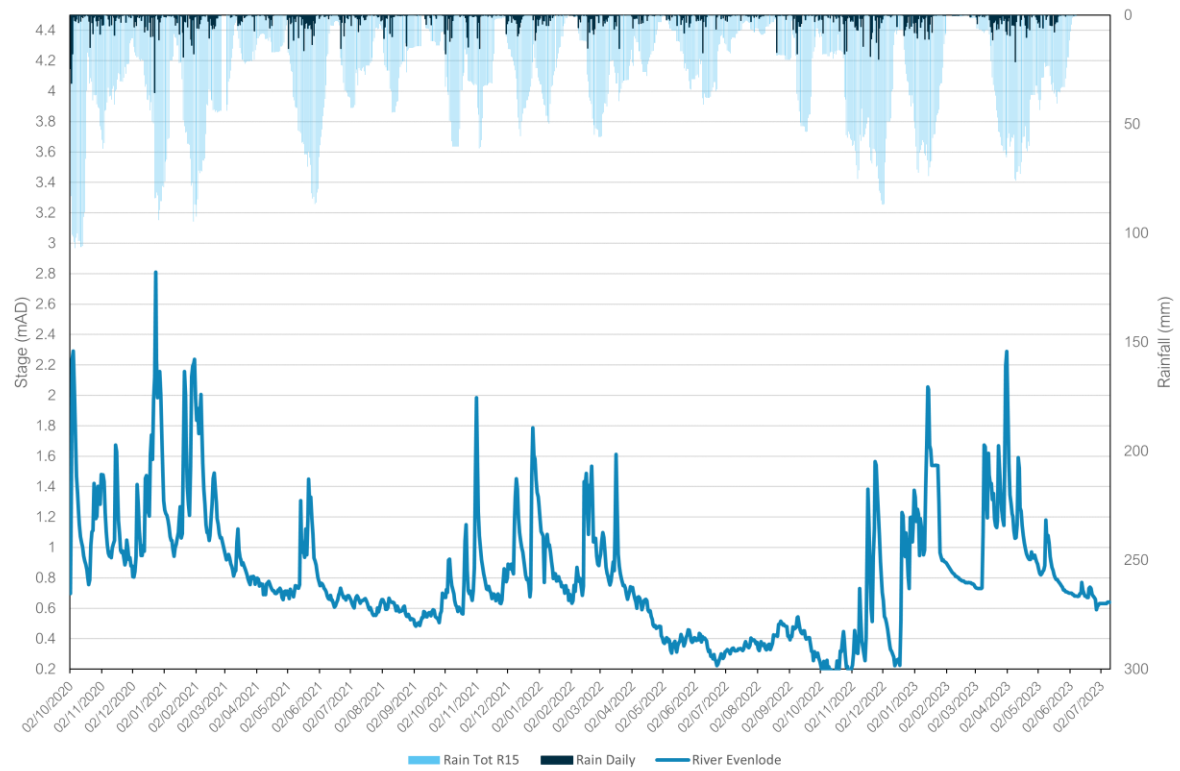
This site is illustrated in the figure below, alongside the closest groundwater reference station and closest gauging station from the Water Situation Report.

Figure 4 – Local Monitoring Stations



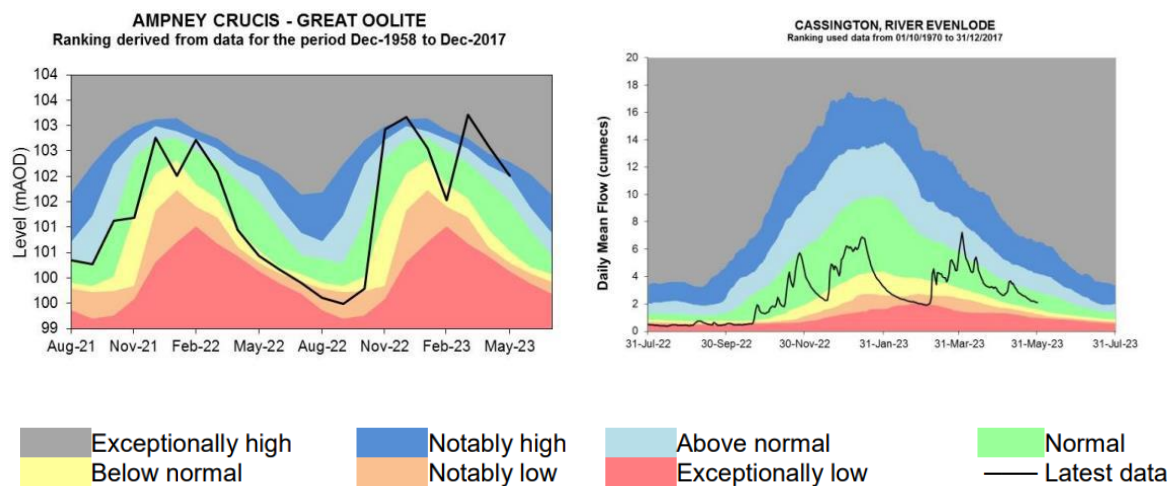
The following figures represent the last three hydrological years of level information at the indicator sites to build a picture of the relative conditions prevalent in the current year. It is presented against both the daily total rainfall values for the catchment and a rolling 15 day total rainfall.

Figure 5A – River Evenlode, Shipton



In addition to this specific station, the wider groundwater context is illustrated in the Water Situation Report for Cotswold East. The nearest groundwater reference station is Ampney Crucis. This site shows groundwater levels were generally at normal, below normal, or notably low levels in 2022. Groundwater levels have generally been higher in 2023, reaching above normal, notably high, and exceptionally high levels. This can be seen in the figure below alongside the river indicator location at Cassington on the River Evenlode.

Figure 6 – Water Situation Report



Extract from - [Water Situation Report \(publishing.service.gov.uk\)](https://publishing.service.gov.uk)

## Network Performance

Within the Milton-under-Wychwood catchment there is one site detailed within the Environment Agency Consents Database which has an Event Duration Monitor (EDM) fitted.

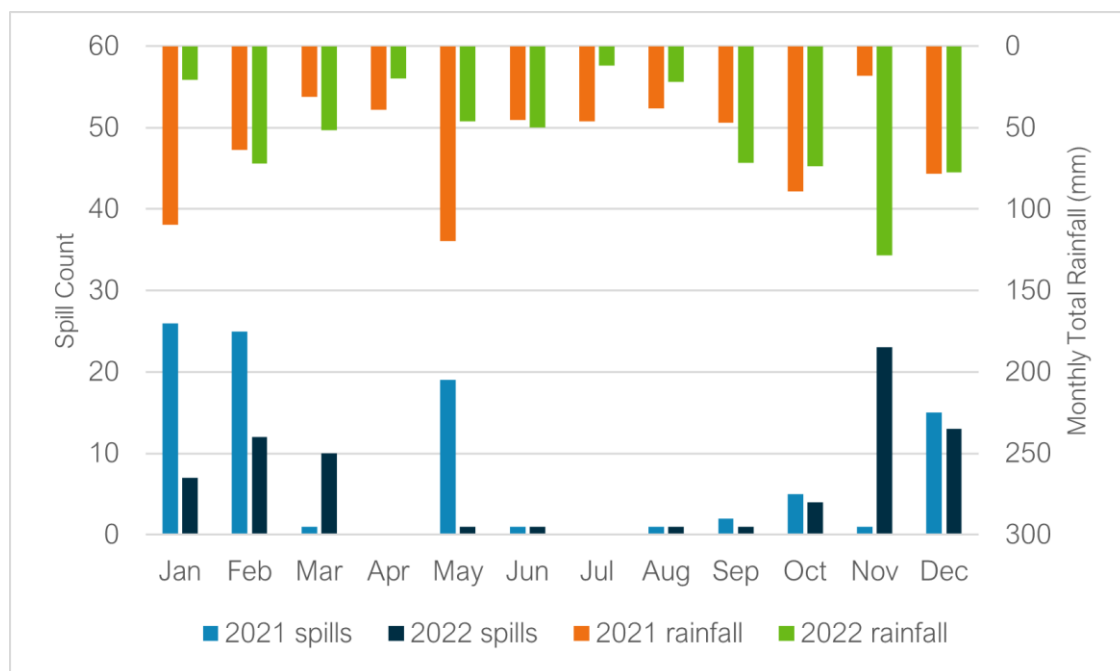
Table 7 below details the last 2 years performance of overflows within the catchment.

Table 7 – Event Duration Monitoring

Overflow	2021		2022	
	Spills	Duration (hours)	Spills	Duration (hours)
Milton-under-Wychwood STW	96	1405.69	73	980.92

A critical part of the assessment of EDM performance and its relation to groundwater infiltration is to review the month-on-month spill performance, against previous years and the monthly total rainfall values to give context to the performance. Figure 8 below presents the EDM performance trend and rainfall for recent years.

Figure 8 – EDM Monthly Performance



The trend in spill performance across the two recorded years does show variation in spills, with a focus on spills during the autumn and winter months. The data suggests a wider relationship between rainfall, elevated groundwater levels and spill frequency. Despite broadly similar rainfall totals, significantly more spills were recorded at Milton-under-Wychwood STW in February 2021 compared to February 2022. The indicator site data shown in Figure 5, suggests groundwater levels in the catchment were higher in February 2021. In November 2022, a significantly higher number of spills were recorded in comparison to November 2021, with Figure 6 suggesting groundwater levels in the catchment reached notably high levels during the period.

## Investigations & Interventions

This section details the activities that have been undertaken within the catchment within the Hydrological Year 2022-23.

### Monitor Installations

The sewer depth monitor (SDM) programme supports long term groundwater understanding within GISMP catchments. Currently, there are a total of 3 monitors installed within the Milton-under-Wychwood catchment. There are currently no further monitor installs planned.

The data from these will be cross-referenced with other long-term records (where available) within the catchment.

### Remediation Works Undertaken this Hydrological Year

Table 9 below provides a summary of the investigations and remediation works undertaken or planned within the Milton-under-Wychwood catchment in the 2022-23 Hydrological Year, as well as works undertaken in the 2021-22 Hydrological Year.

Table 9 – Works Undertaken in the 2022/23 Hydrological Year & in the 2021/22 Hydrological Year

Investigation/ remediation type	Number/ length undertaken 2021/22	Number/ length undertaken 2022/23
CCTV survey	N/A	N/A
Look and lift survey	N/A	N/A
Sewer lining	N/A	N/A
Patch lining	N/A	N/A
Manhole sealing	N/A	N/A
Manhole sealing plates	N/A	N/A
Manhole covers and frames replaced	N/A	N/A

No interventions/ investigations were carried out in the Milton-under-Wychwood catchment in the 2022/23 Hydrological Year. However, the system will continue to be monitored and investigations/ interventions carried out as appropriate and when conditions allow.

An upgrade is also being planned for Milton-under-Wychwood STW. This will provide a major increase in treatment capacity, reducing the need for untreated discharges to the environment. The project is due to be completed in 2025.



## Summary

EDM data for the Milton-under-Wychwood catchment is indicative of the role of groundwater infiltration on overflow spills in the catchment. This hydrological year (October 2022 – September 2023), indicator site data suggests groundwater levels in the catchment have generally been higher than the previous hydrological year, and EDM data for 2023 will be analysed once available to continue to examine the relationship between groundwater levels and overflow spills in the catchment.

Lift and look and CCTV surveys will be undertaken in remaining wet winter periods if conditions allow. The aim of this is to find further priority locations for remediation and investigating/ justifying the need for future larger scale lining as part of our Price Review (PR) process if required.

# Addendum - Annual Update 2024

## Table of contents

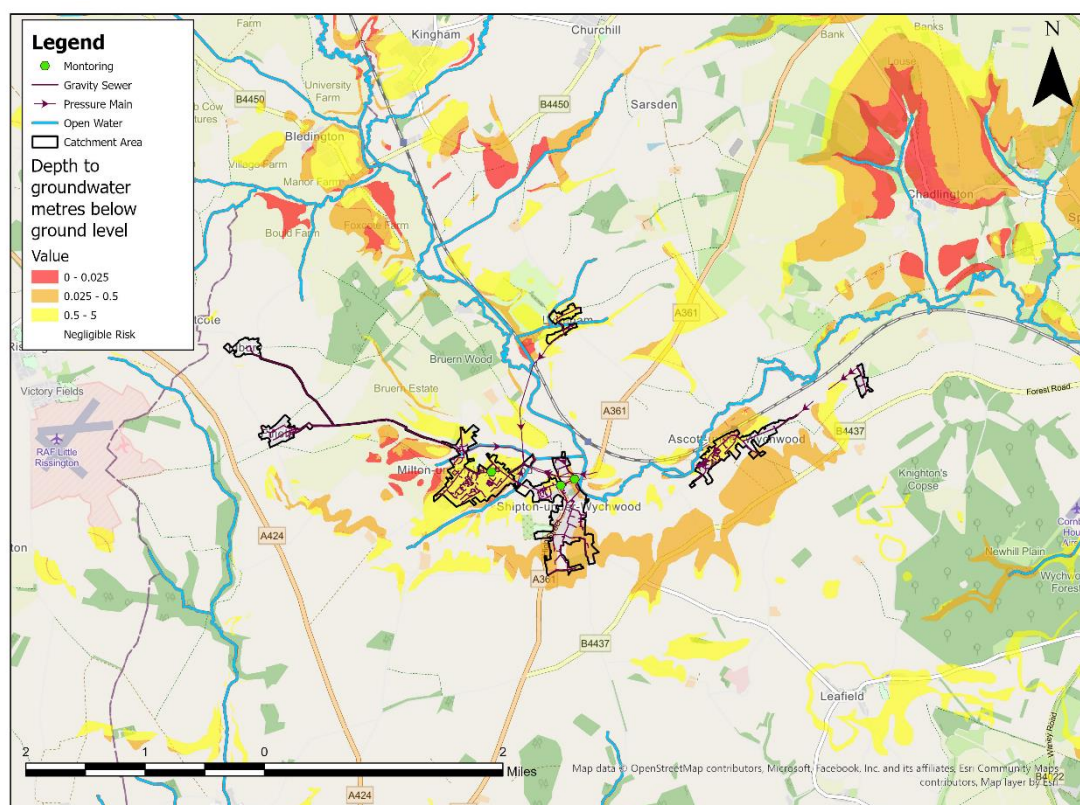
Overview	38
Hydrological Review – 2023-24	39
Network Performance	42
Investigations & Interventions	43
Summary	45

## Overview

This addendum to the Milton-under-Wychwood Groundwater Impacted System Management Plan 2021 (GISMP) provides an update on performance/work undertaken in the Hydrological Year October 2023 to September 2024. The key points covered include:

- Hydrological conditions
- Performance of the sewerage system
- Mitigation / remedial measures progressed over the last year and being planned
- Summary and plan for 2024/25

Figure 1 – Milton-under-Wychwood Monitoring Plan



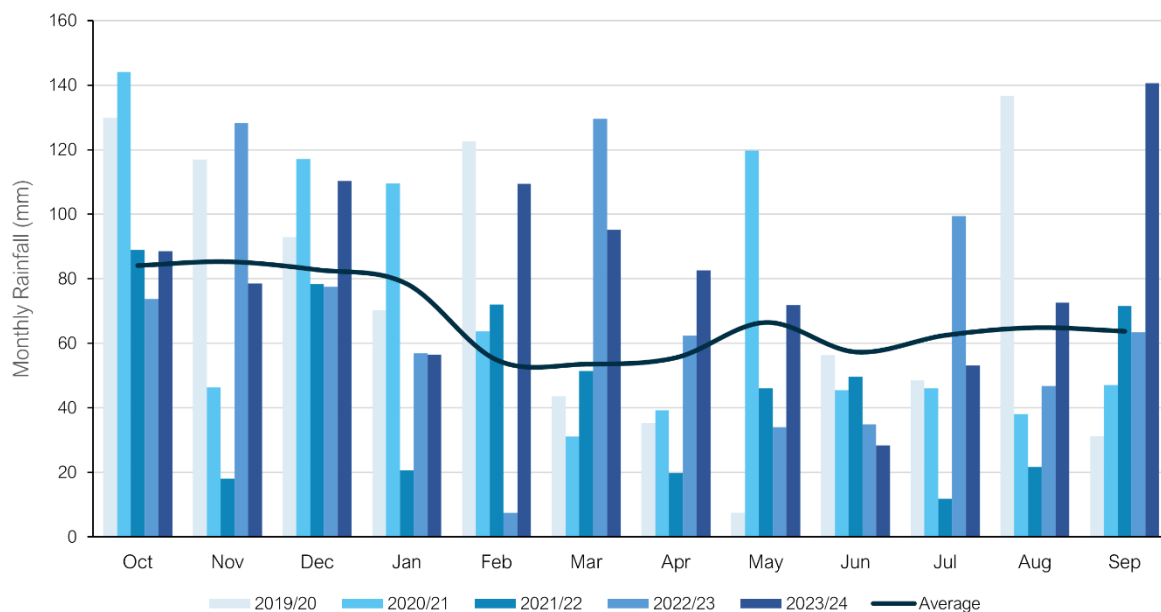
## Hydrological Review – 2023-2024

This section summarises the hydrological conditions within the Milton-under-Wychwood catchment within the period under investigation and provides comparison against previous year's performance to put the annual performance into context. The hydrological review has been undertaken based on the Hydrological Year which runs October 1<sup>st</sup> to September 30<sup>th</sup>.

### Catchment Rainfall

Representative Radar rainfall has been used to generate monthly data at catchment level for comparison with average data generated by local Met Office Weather Station Records. Figure 2 presents the comparison of this data for the last five hydrological years to support longer term trends within the local system.

Figure 2 – Monthly Rainfall Data



Average Values taken from Met Office Weather Station at Little Rissington based on the period 1991-2020

The total rainfall for the 2023/24 hydrological year is 22% above the annual average total. Total rainfall values are presented in Table 3 below.

Table 3 –Total Rainfall Based on Hydrological Year

Average (mm)	2019/20 (mm)	2020/21 (mm)	2021/22 (mm)	2022/23 (mm)	2023/24 (mm)
810	892	848	550	815	988

## Groundwater / Local River Level

The Milton-under-Wychwood catchment is situated in the Cotswolds East water resources area. It primarily sits in the Charmouth Mudstone Formation of coarse to fine grained sediments forming interbedded sequences. This is not a designated principal aquifer within the UK.

The Environment Agency has gauging stations on local watercourses measuring stage and observation boreholes (OBH) measuring groundwater levels locally to the catchment which can be used to provide indicative local groundwater performance.

From previous investigations we have identified the following site is a good indicator of groundwater levels within the catchment.

- River Evenlode, Shipton.

This site is illustrated in Figure 4, alongside the closest groundwater reference station and closest gauging station from the Water Situation Report.

Figure 4 – Local Monitoring Stations

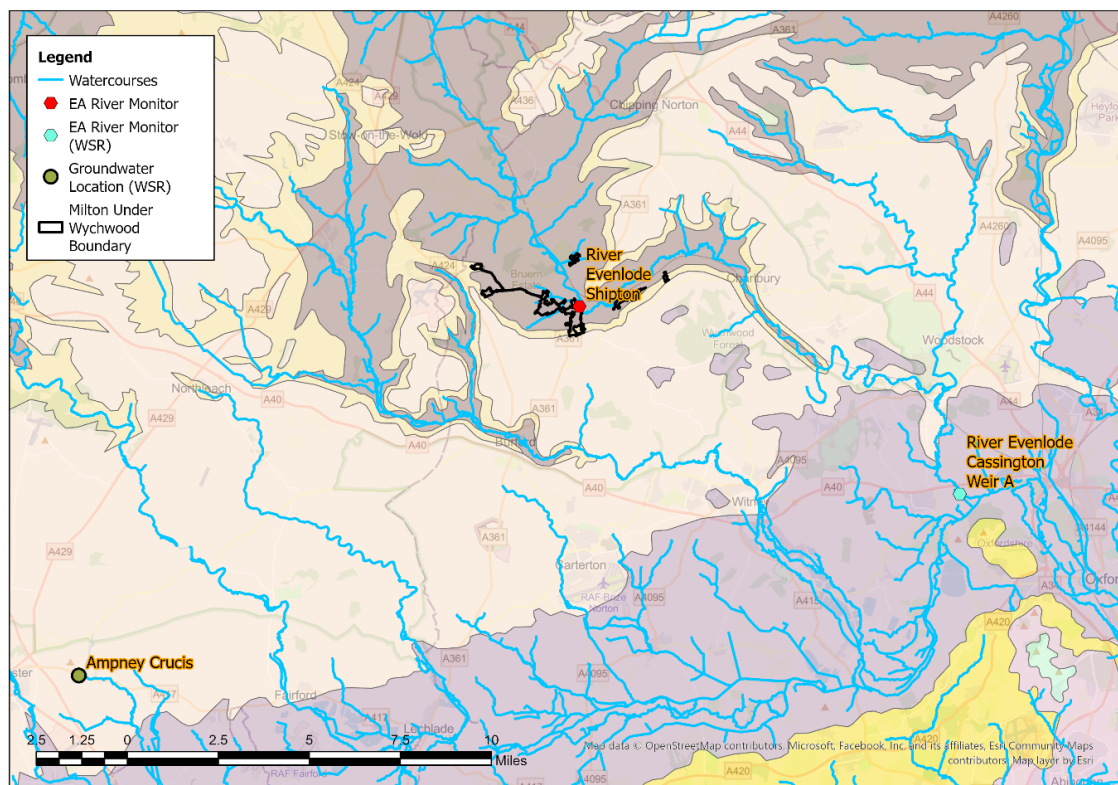
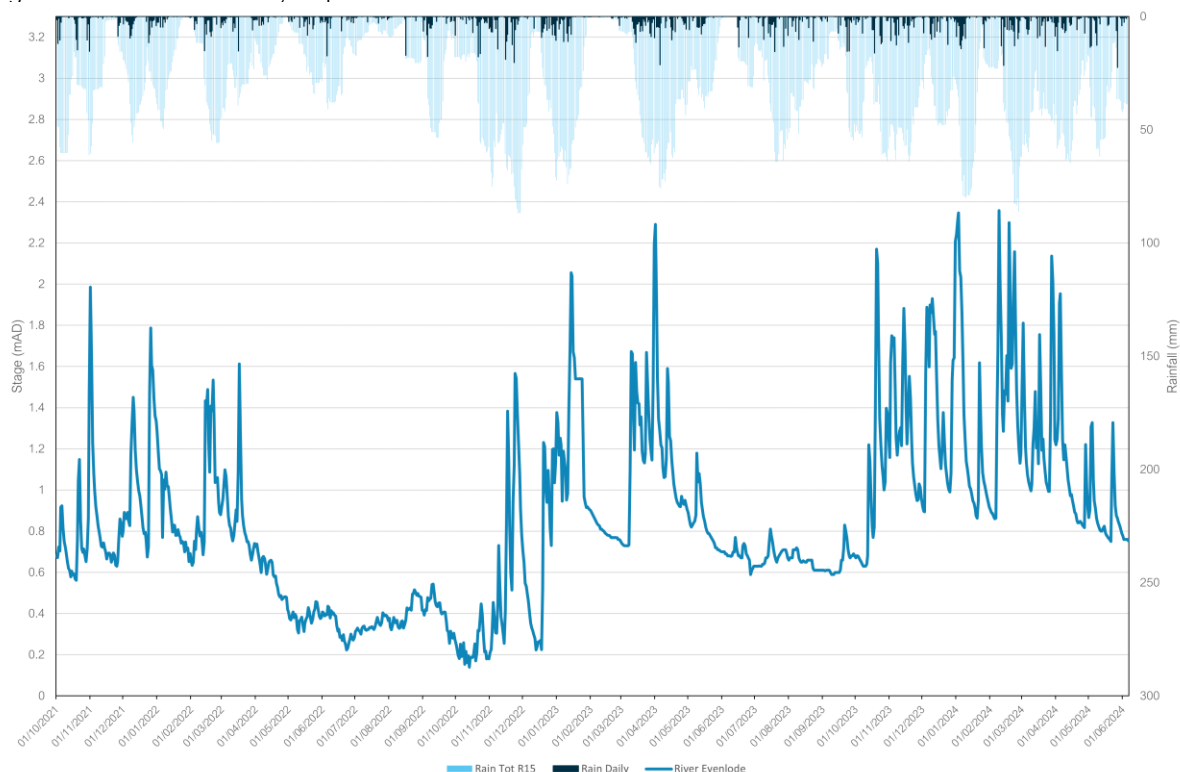


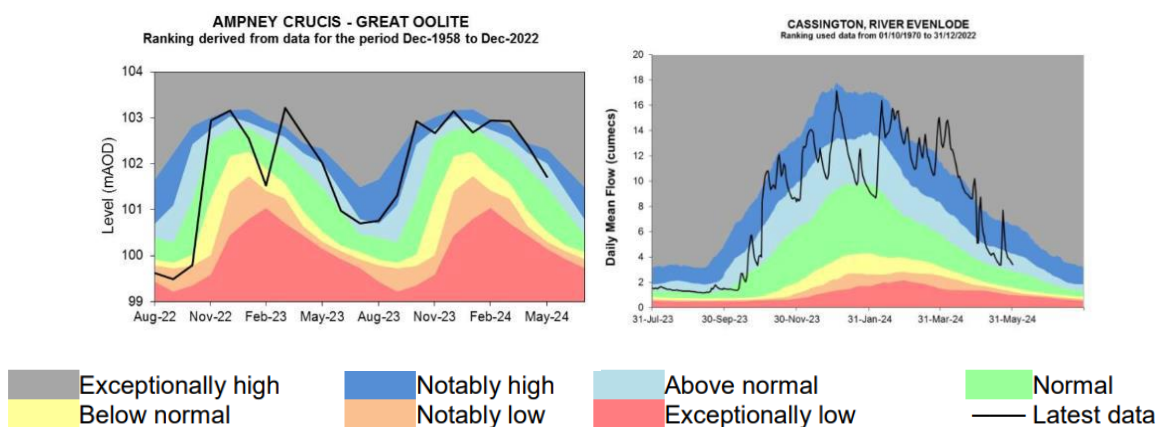
Figure 5A represents the last three hydrological years of level information at the indicator site to build a picture of the relative conditions prevalent in the current year. It is presented against both the daily total rainfall values for the catchment and a rolling 15 day total rainfall.

Figure 5A – River Evenlode, Shipton



In addition to this specific station, the wider groundwater context is illustrated in the Water Situation Report for Cotswolds East. The nearest groundwater reference station is Ampney Crucis. This site shows groundwater levels to vary throughout 2023, being observed at below normal, normal and above normal levels, peaking at exceptionally high levels around April 2023. Groundwater levels in 2024 have consistently been observed at above normal, notably high and exceptionally high levels. This can be seen in Figure 6 alongside the river indicator location at Cassington on the River Evenlode.

Figure 6 – Water Situation Report



Extract from - [Water Situation Report \(publishing.service.gov.uk\)](https://publishing.service.gov.uk)



## Network Performance

Within the Milton-under-Wychwood catchment there is one site detailed within the Environment Agency Consents Database which has an Event Duration Monitor (EDM) fitted.

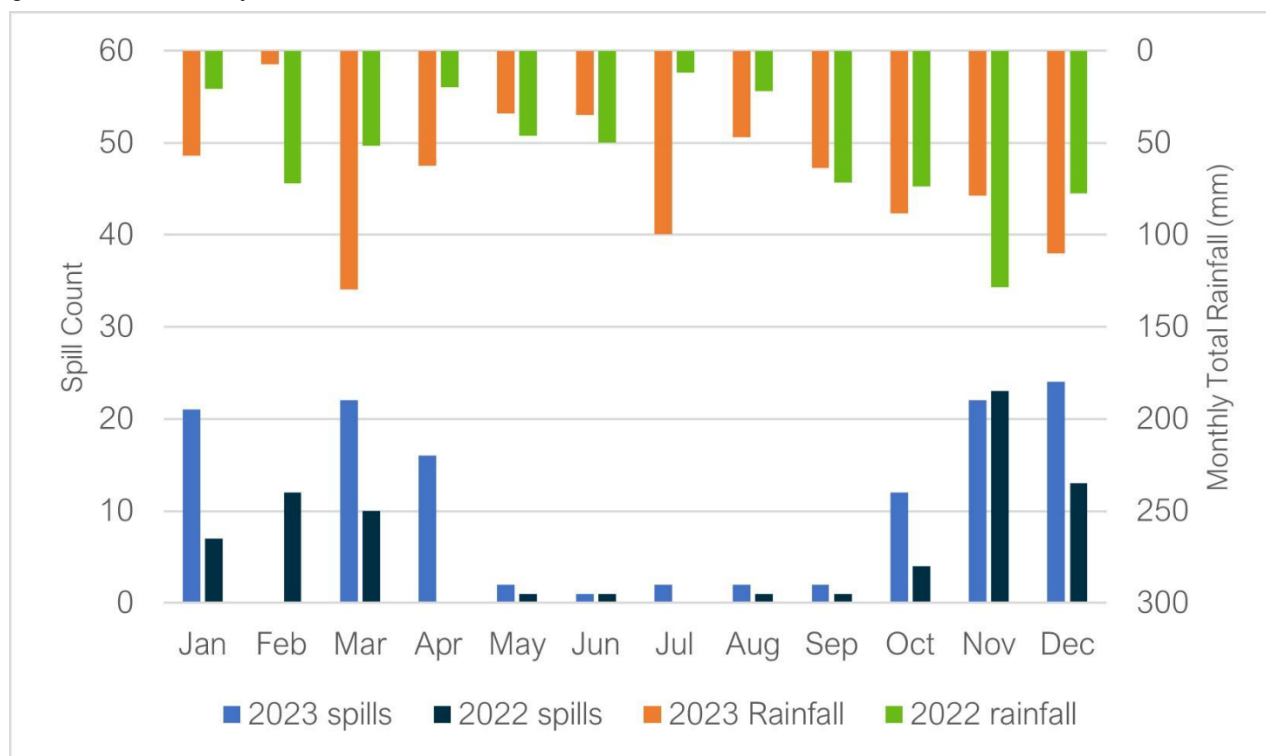
Table 7 below details the last 2 years performance of overflows within the catchment.

Table 7 – Event Duration Monitoring

Overflow	2022		2023	
	Spills	Duration (hours)	Spills	Duration (hours)
Milton-under-Wychwood STW	73	980.92	126	2141.75

A critical part of the assessment of EDM performance and its relation to groundwater infiltration is to review the month-on-month spill performance, against previous years and the monthly total rainfall values to give context to the performance. Figure 8 below presents the EDM performance trend and rainfall for recent years.

Figure 8 – EDM Monthly Performance



The trend in spill performance across the two recorded years does show variation in spills, with a focus on spills during winter, spring and autumn months. The data suggests a wider relationship between elevated groundwater and spill frequencies. The highest peaks in spills for 2023 can be seen in January, March, April and October - December, when the indicator site data shown in Figures 5 and 6 suggests groundwater levels in the catchment became elevated and were generally higher than the equivalent months in 2022, when lower spill frequencies were generally observed. Summer spills were also recorded across 2022 and 2023 which indicates spills occurring in the catchment due to intense or prolonged rainfall events, outside of periods of elevated groundwater levels.

## Investigations & Interventions

This section details the activities that have been undertaken within the catchment within the Hydrological Year 2023-24.

### Monitor Installations

The sewer depth monitor (SDM) programme supports long term groundwater understanding within GISMP catchments. Currently, there are a total of 3 monitors installed within the Milton-under-Wychwood catchment. There are currently no further monitor installs planned.

The data from these will be cross-referenced with other long-term records (where available) within the catchment.

### Remediation Works Undertaken this Hydrological Year

Table 9 below provides a summary of the investigations and remediation works undertaken or planned within the Milton-under-Wychwood catchment in the 2023/24 Hydrological Year, as well as works undertaken in the previous two hydrological years.

Table 9 – Works Undertaken in the 2023/2024, 2022/23 & 2021/22 Hydrological Year

Investigation/ remediation type	Number/ length undertaken 2021/22	Number/ length undertaken 2022/23	Number/ length undertaken 2023/24
CCTV survey	N/A	N/A	1.896 Kilometres*
Look and lift survey	N/A	N/A	N/A
Sewer lining	N/A	N/A	N/A
Patch lining	N/A	N/A	N/A
Manhole sealing	N/A	N/A	N/A
Manhole sealing plates	N/A	N/A	N/A
Manhole covers and frames replaced	N/A	N/A	N/A

\*Surveys undertaken across sewers predicted to be at high/ medium and low risk of groundwater infiltration. The purpose of the surveys is to identify priority locations for remediation and to help verify the sewer risk zones.

### Summary of CCTV surveys

Tables 10 and 11 below summarise the CCTV work undertaken for Milton under Wychwood in the 2023-24 Hydrological Year and gives details on the infiltration identified.

Table 10 – Total length of sewerage network surveyed by CCTV in the 2023-24 Hydrological Year

Investigation/ remediation type	Length (m)
Planned CCTV Survey	1896
Survey Completed	1893
Total surveyed with clear flow	761

Table 11 – Number of points of infiltration found and assessed severity from CCTV Surveys

Infiltration severity	No. of sections of pipework
Gushing	1
Running	2
Dripping	0
Seeping	0
Total	3

An upgrade is also being planned for Milton-under-Wychwood STW. This will provide a major increase in treatment capacity, reducing the need for untreated discharges to the environment.

The project is due to be completed in 2025, however, delivery dates are being managed at a programme level, delivery dates stated are based upon current views and are subject to change.

It is expected that this catchment will meet all government targets for storm overflows by 2035 – 2040.

## Summary

EDM data for the Milton-under-Wychwood catchment is indicative of the role of groundwater infiltration on overflow spills in the catchment. This hydrological year (October 2023 – September 2024), indicator site data suggests groundwater levels in the catchment have generally been higher than the previous hydrological year, and EDM data for 2024 will be analysed once available to continue to examine the relationship between groundwater levels and overflow spills in the catchment.

Lift and look and CCTV surveys will be undertaken in remaining wet winter periods if conditions allow and subject to funding and available capacity. The aim of this is to find further priority locations for remediation and investigating/justifying the need for future larger scale lining as part of our Price Review (PR) process if required.

## Addendum – Annual Update 2025

### Table of contents

Cotswolds River Basin Summary	46
Bourton-on-the-Water	48
Broadwell	51
Carterton	53
Chadlington	56
Clanfield	58
Faringdon	61
Milton-under-Wychwood	63
Moreton-in-Marsh	66
Stanlake	70
Witney	73

## Cotswolds river basin summary

The Thames Water region covers the length of the River Thames from its source down to Tilbury including all its tributaries. The sewer network has overflows that discharge along the River Thames and its associated tributaries. The role of storm overflows in the network is to protect against property flooding from the sewerage system. Storm overflows, which may be augmented with settlement tanks, are employed to optimise the split between wastewater treatment and the management of rainfall. Storm separation is typically designed in accordance with regulatory guidance.

Aligned with our Drainage and Wastewater Management Plan (DWMP) approach, the Thames Water region has been split into River Basins, each contains a varying number of localised sewer networks. Taking this approach allows alignment to the different drivers in each river basin and provides an efficient way to investigate, tackle performance and protect the environment. This report covers the performance of the sewer networks within the Cotswolds River Basin which are heavily influenced by groundwater infiltration into the network.

The Cotswold River Basin covers the upper reaches of the River Thames including its associated tributaries and streams. The river basin contains ten heavily groundwater impacted Thames Water localised sewer systems that interact with various rivers and streams forming the tributaries to the River Thames. Each localised sewer system contains one or more storm overflows located at sewage treatment works (STW) and/or in the network. Figure 1 shows the relationship between the sewer systems and the associated rivers and streams. Figure 2 shows the location of each localised sewer system within the Cotswold River Basin with an insert showing the location of the Cotswold River Basin in relation to the Thames Water Region.

Sewer System	Associated River / Stream	Relationship to the River Thames
Bourton-on-the-Water STW	River Windrush	Direct tributaries of the River Thames
Broadwell STW	Broadwell Brook	Indirect tributary of the River Thames via Great Brook
Carterton STW	Shill Brook, River Windrush	Shill Brook indirect tributary of the River Thames via Great Brook. River Evenlode direct tributary of the River Thames.
Chadlington STW	River Evenlode	Direct tributary of the River Thames
Clanfield STW	Clanfield Brook	Indirect tributary of the River Thames via Broadwell Brook then Great Brook.
Faringdon STW	Faringdon Brook	Indirect tributary of the River Thames via the River Ock
Milton-Under-Wychwood STW	River Evenlode	Direct tributary of the River Thames
Moreton-in-Marsh STW	River Evenlode	Direct tributary of the River Thames
Standlake STW	River Windrush	Direct tributary of the River Thames
Witney STW	River Windrush	Direct tributary of the River Thames

Figure 1: Relationship of the Sewer Systems to Associated Rivers



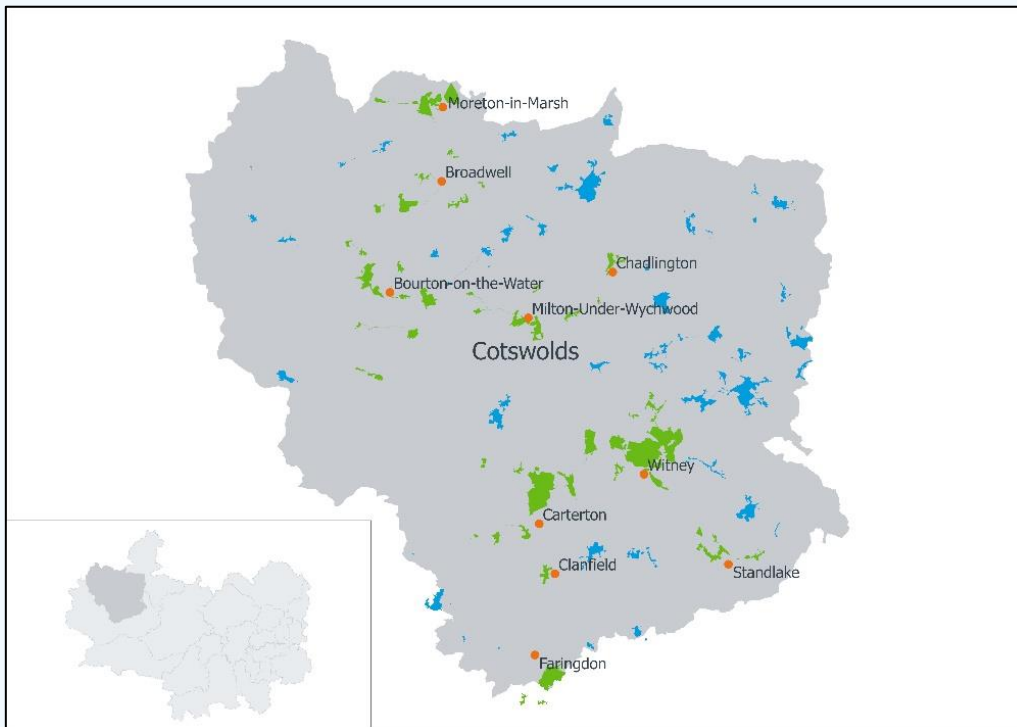


Figure 2: Location of Sewer Systems Within the Cotswold River Basin

# Bourton-on-the-Water

Bourton-on-the-Water lies on the River Windrush in Gloucestershire, approximately 4 miles South of Stow-on-the-Wold and 14 miles East of Cheltenham.

This addendum provides an update on work undertaken in the hydrological year October 2024 to September 2025 for the Bourton-on-the-Water sewerage system. The key points covered include:

- Hydrological conditions
- Performance of the sewerage system
- Mitigation / remedial measures progressed over the last year

Figures 1 to 5 illustrate the relationship between rainfall and CSO spills. As shown in Figure 1, the decrease in rainfall from 2023/24 to 2024/25 correlates with reduced river levels (Figures 2 and 3), as well as a decline in the number and duration of CSO spills shown in Figure 5.

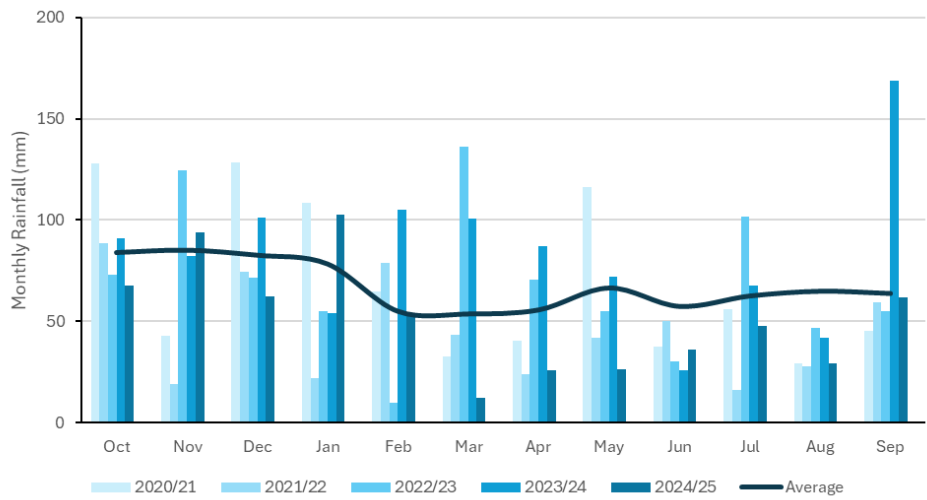


Figure 1: Monthly rainfall data 2020/21 to 2024/25

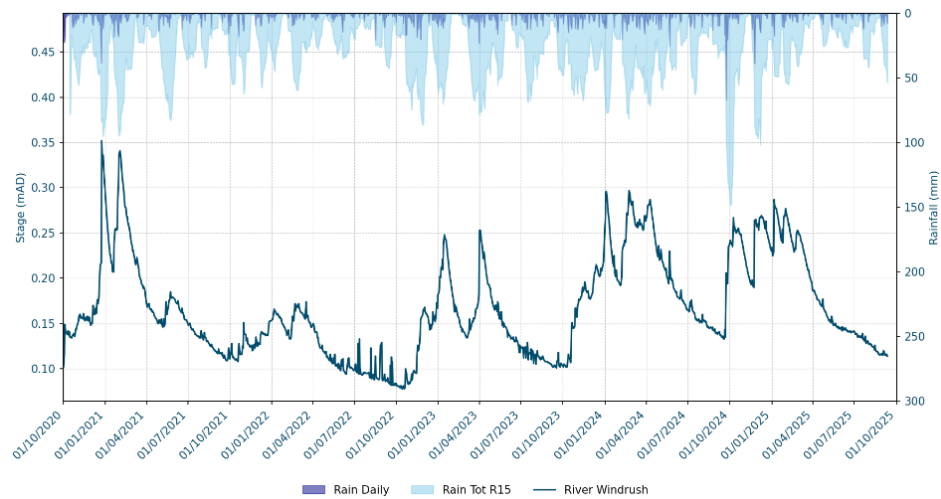


Figure 2: River Level data for Windrush, Bourton Windrush

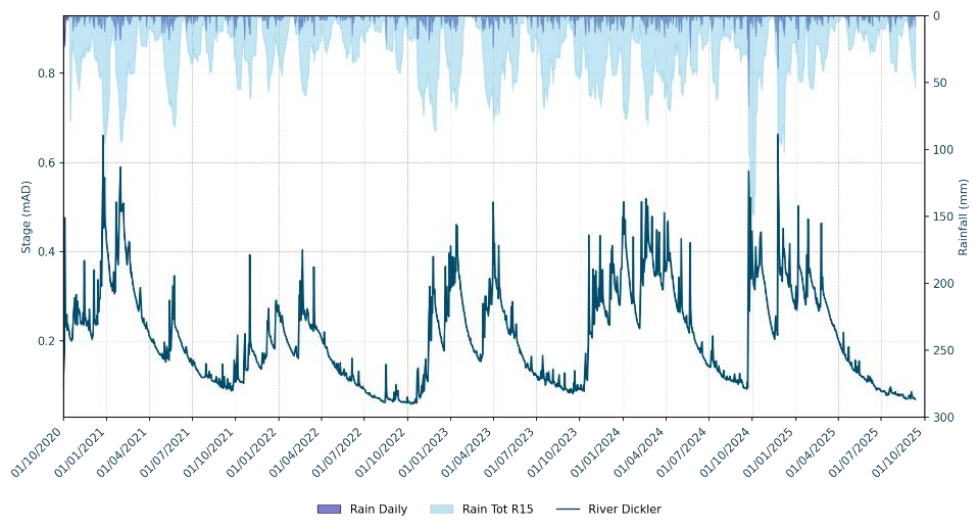


Figure 3: River Level data for Dickler, Bourton Dickler

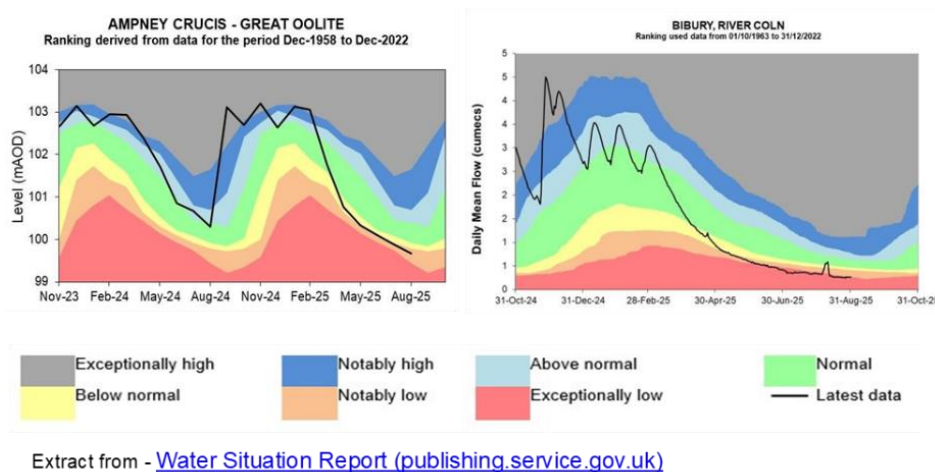


Figure 4: Ground Water situation Report

Table 1 below details the last 2 years performance of overflows in the catchment. To assess EDM performance and its relation to groundwater infiltration, a review of the month-on-month spill performance in 2023 and 2024 against the monthly total rainfall values has been undertaken, as observed in Figure 5.

Event Duration Monitoring	2023		2024	
Overflow	Annual Spills	Duration (hours)	Annual Spills	Duration (hours)
Bourton-on-the-Water STW	110	1565.25	153	2583.15

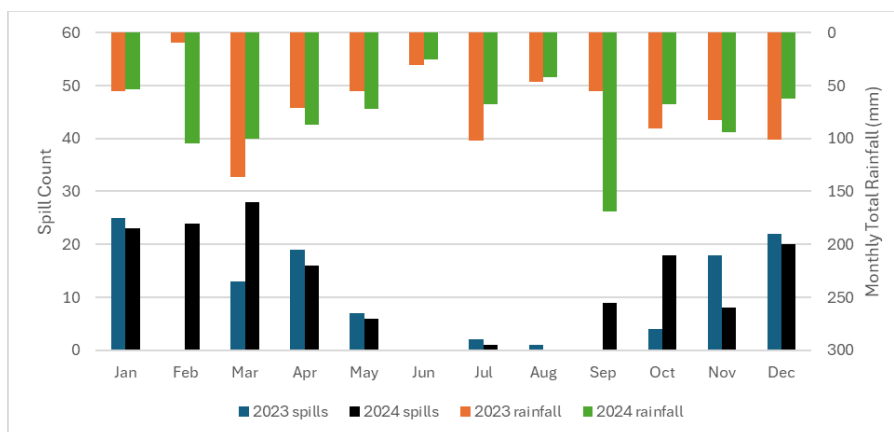


Figure 5: Monthly rainfall data versus monthly spill count for 2023 and 2024 – Bourton-on-the-Water STW

Table 2 below outlines the remediation works undertaken to address infiltration in the catchment, and enhancements to treatment works and/or pumping stations. Please note that this table only refers to work completed in the previous year.

Investigation / remediation type	2020/21	2021/22	2022/23	2023/24	2024/25
CCTV surveys	-	-	1,756m	1,177m	-
Look and lift surveys	-	-	-	61	-
Sewer lining	-	4,123m	2,347m	-	-
Patch lining	-	-	-	-	-
Manhole sealing / plates / covers and frames replaced	-	338	31	-	-
ATAC unit deployment	-	-	-	-	-

## Summary

A review of river level data over 2023/24 has increased compared to previous years. The number and duration of spills have increased in 2024 compared to 2023. The higher number of annual spills and river levels could be a result of the increased rainfall in 2024 (seen in Figure 5). Moreover, groundwater levels for 2024/2025 have stayed relatively similar to the groundwater levels of the previous year, but the effect of this will be analysed when 2025 spill data is published.

# Broadwell

Broadwell is located in Gloucestershire, approximately 2 miles south of Moreton-in-Marsh and 2 miles west of Chipping Norton.

This addendum provides an update on work undertaken in the hydrological year October 2024 to September 2025 for the Broadwell sewerage system. The key points covered include:

- Hydrological conditions
- Performance of the sewerage system
- Mitigation / remedial measures progressed over the last year

Figures 1 and 2 illustrate the relationship between rainfall and spills at CSOs. Figure 1 displays the reduced rainfall recorded in 2024/25 compared to 2023/24. Figure 2 represents a decreased number and duration of CSO spills from 2023/24 to 2024/25

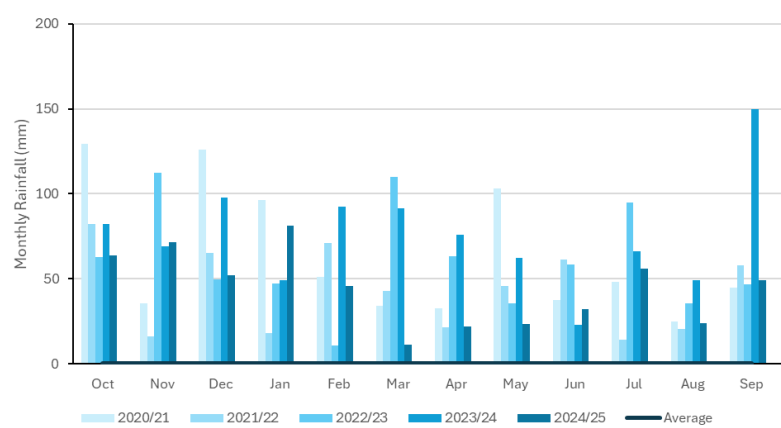


Figure 1: Monthly rainfall data 2020/21 to 2024/25

Table 1 below details the last 2 years performance of overflows in the catchment. To assess EDM performance and its relation to groundwater infiltration, a review of the month-on-month spill performance in 2023 and 2024 against the monthly total rainfall values has been undertaken, as observed in Figure 2.

Event Duration Monitoring	2023		2024	
Overflow	Annual Spills	Duration (hours)	Annual Spills	Duration (hours)
Broadwell STW	48	634.25	58	755.30

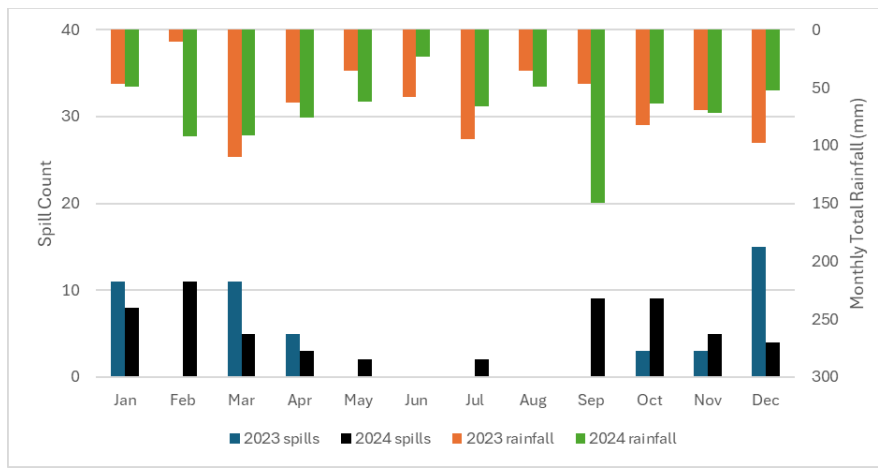


Figure 2: Monthly rainfall data versus monthly spill count for 2023 and 2024 – Broadwell STW

Table 2 below outlines the remediation works undertaken to address infiltration in the catchment, and enhancements to treatment works and/or pumping stations. Please note that this table only refers to work completed in the previous year.

Investigation / remediation type	2020/21	2021/22	2023/24	2023/24	2024/25
CCTV surveys	-	-	-	600m	-
Look and lift surveys	-	-	-	-	-
Sewer lining	-	-	-	-	-
Patch lining	-	-	-	-	-
Manhole sealing / plates / covers and frames replaced	-	-	-	-	-
ATAC unit deployment	-	-	-	-	-

## Summary

The number and duration of spills have increased in 2024 compared to 2023. The higher number of annual spills could be a result of the increased rainfall in 2024 (seen in Figure 2). This suggests that rainfall directly correlates to spill events. However, there is insufficient evidence to support the validity of this correlation, as the spills are spread out throughout the year, with February having the higher number of spills 2024, but not being the wettest month.

## Carterton

Carterton is located in West Oxfordshire, approximately 4 miles south-west of Witney.

This addendum provides an update on work undertaken in the hydrological year October 2024 to September 2025 for the Carterton sewerage system. The key points covered include:

- Hydrological conditions
- Performance of the sewerage system
- Mitigation / remedial measures progressed over the last year

Figures 1 to 5 illustrate the relationship between rainfall and CSO spills at indicator sites. As shown in Figure 1, the decrease in rainfall from 2023/24 to 2024/25 correlates with the decline in the number and duration of CSO spills shown in Figure 5. However, river and groundwater levels (Figures 2 and 3) have remained consistent with previous years.

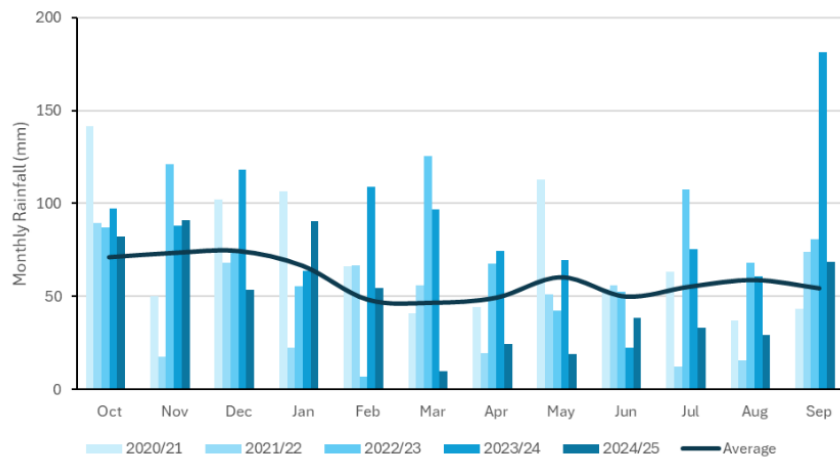


Figure 1: Monthly rainfall data 2020/21 to 2024/25

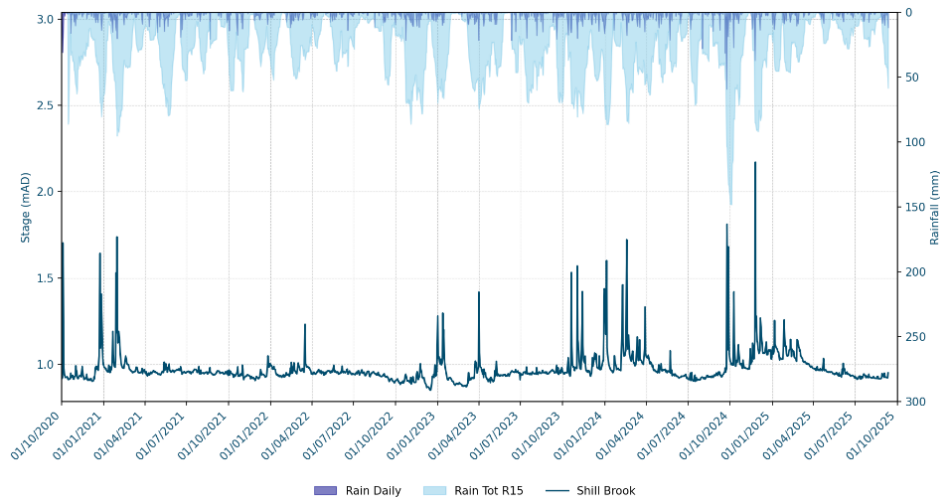


Figure 2: River Level data for Shill Brook, Bampton



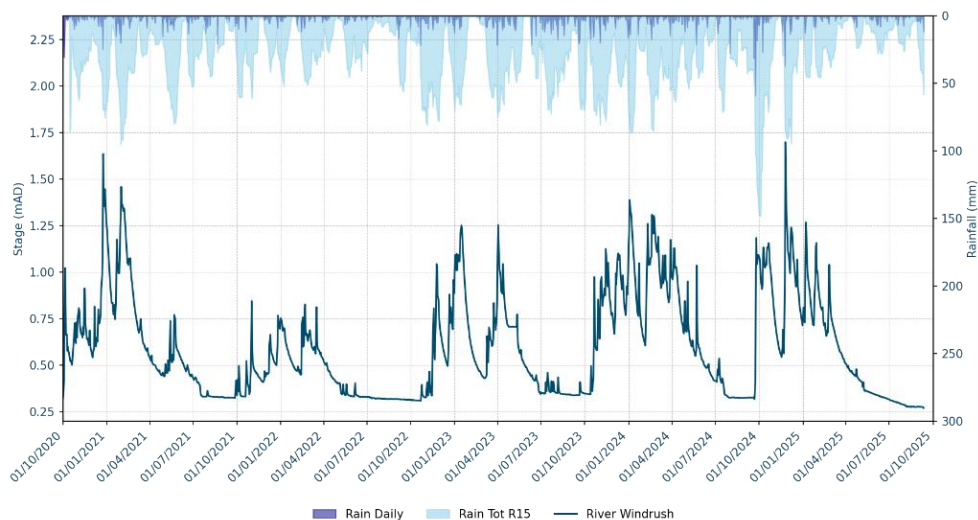


Figure 3: River Level data for River Windrush, Worsham

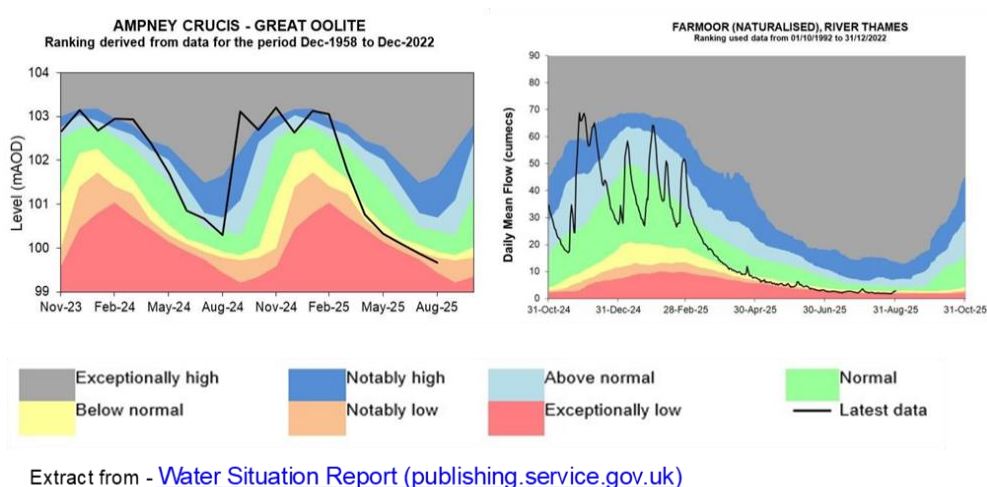


Figure 4: Ground Water situation Report

Table 1 below details the last 2 years performance of overflows in the catchment. To assess EDM performance and its relation to groundwater infiltration, a review of the month-on-month spill performance in 2023 and 2024 against the monthly total rainfall values has been undertaken, as observed in Figure 5.

Event Duration Monitoring	2023		2024	
Overflow	Annual Spills	Duration (hours)	Annual Spills	Duration (hours)
Carterton STW	61	1046.25	57	1057.30

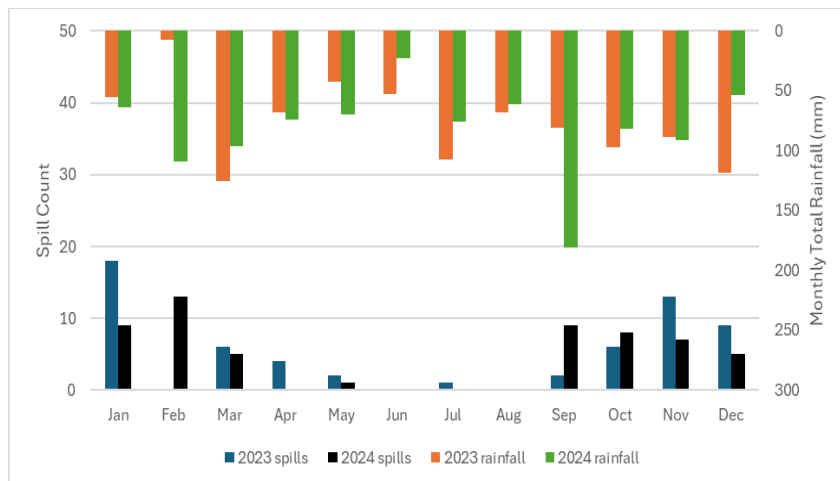


Figure 5: Monthly rainfall data versus monthly spill count for 2023 and 2024 – Carterton STW

Table 2 below outlines the remediation works undertaken to address infiltration in the catchment, and enhancements to treatment works and/or pumping stations. Please note that this table only refers to work completed in the previous year.

Investigation / remediation type	2020/21	2021/22	2022/23	2023/24	2024/25
CCTV surveys	-	-	-	530m	700m
Look and lift surveys	-	-	-	3	11
Sewer lining	-	-	-	-	-
Patch lining	-	-	-	-	-
Manhole sealing / plates / covers and frames replaced	-	-	-	-	-
ATAC unit deployment	-	-	-	-	-

## Summary

A review of river level data over 2023/2024 shows a similar pattern being followed compared to previous years, including the average rainfall in 2023 staying fairly consistent compared to 2024 (see Figure 5). The lower number of annual spills could be a result of the rainfall and river levels staying consistent. Moreover, groundwater levels for 2024/2025 have stayed relatively similar to the groundwater levels of the previous year, but the effect of this will be analysed when 2025 spill data is published.

In the reporting year, we have undertaken CCTV survey of our sewers network, covering some 700 metres. These CCTV surveys help us monitor the condition of sewer network as well as identifying potential defects that could allow groundwater infiltration. In conjunction with the CCTV, we have undertaken 11 Lift and Look surveys, this type of visual inspection allows for quicker and more extensive checks on performance of the system but lacks the point source observations that CCTV can yield.

# Chadlington

Chadlington is located in Evenlode valley, approximately 3 miles south of Chipping Norton.

This addendum provides an update on work undertaken in the hydrological year October 2024 to September 2025 for the Chadlington sewerage system. The key points covered include:

- Hydrological conditions
- Performance of the sewerage system
- Mitigation / remedial measures progressed over the last year

Figures 1 and 2 illustrate the relationship between rainfall and spills at CSOs. There is a decrease in rainfall from 2023/24 to 2024/25 shown in Figure 1; this broadly correlates to fewer and shorter spills at the CSOs, shown in Figure 2.

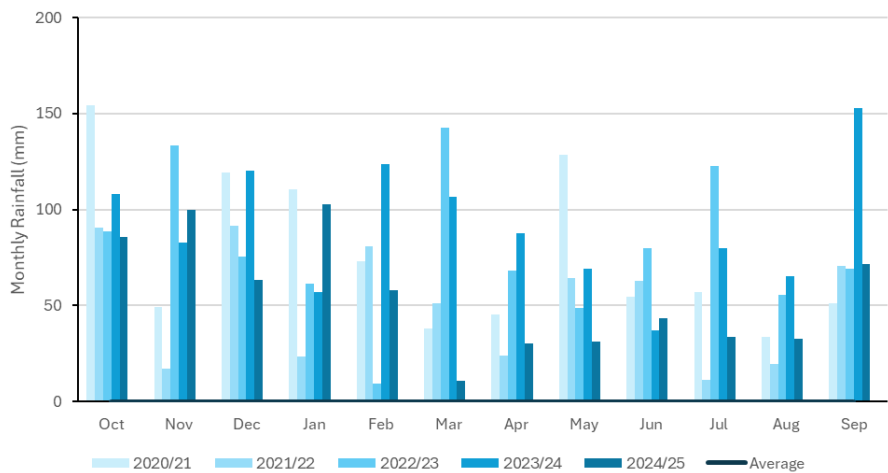


Figure 1: Monthly rainfall data 2020/20 to 2024/25

Table 1 below details the last 2 years performance of overflows in the catchment. To assess EDM performance and its relation to groundwater infiltration, a review of the month-on-month spill performance in 2023 and 2024 against the monthly total rainfall values has been undertaken, as observed in Figure 2.

Event Duration Monitoring	2024		2024	
Overflow	Annual Spills	Duration (hours)	Annual Spills	Duration (hours)
Chadlington STW	64	668	84	1311.30

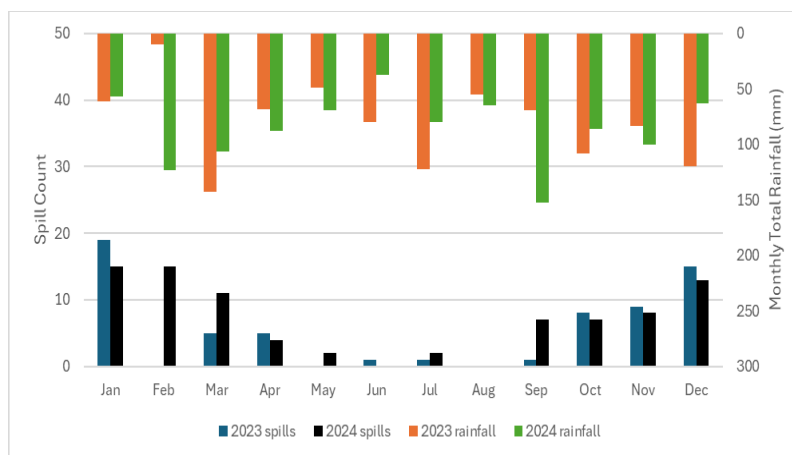


Figure 2: Monthly rainfall data versus monthly spill count for 2023 and 2024 – Chadlington STW

Table 2 below outlines the remediation works undertaken to address infiltration in the catchment, and enhancements to treatment works and/or pumping stations. Please note that this table only refers to work completed in the previous year.

Investigation / remediation type	2020/21	2021/22	2022/23	2023/24	2024/25
CCTV surveys	-	-	-	30m	-
Look and lift surveys	-	-	-	-	-
Sewer lining	-	-	-	-	-
Patch lining	-	-	-	-	-
Manhole sealing / plates / covers and frames replaced	-	-	-	-	-
ATAC unit deployment	-	-	-	-	-

## Summary

The number and duration of spills have increased in 2024 compared to 2023. The average rainfall has stayed fairly consistent between 2023 and 2024. Rainfall usually directly correlates to spill events. However, there is insufficient evidence to support the validity of this correlation, as the spills do not occur during summer season, which is usually the hottest months of the year, and driest, August (2024) had the same rainfall as December but no spills, whereas December (2024) had some spills with the same rainfall.

# Clanfield

Clanfield is located in the district of Oxfordshire, approximately 3 miles South of Carterton and 15 miles West of Oxford.

This addendum provides an update on work undertaken in the hydrological year October 2024 to September 2025 for the Clanfield sewerage system. The key points covered include:

- Hydrological conditions
- Performance of the sewerage system
- Mitigation / remedial measures progressed over the last year

Figures 1 to 6 illustrate the relationship between rainfall and CSO spills at indicator sites. As shown in Figure 1, rainfall decreases from 2023/24 to 2024/25, however river levels remain fairly consistent (Figures 2 to 4). There is a reduction in both the frequency and duration of CSO spills shown in Figure 6.

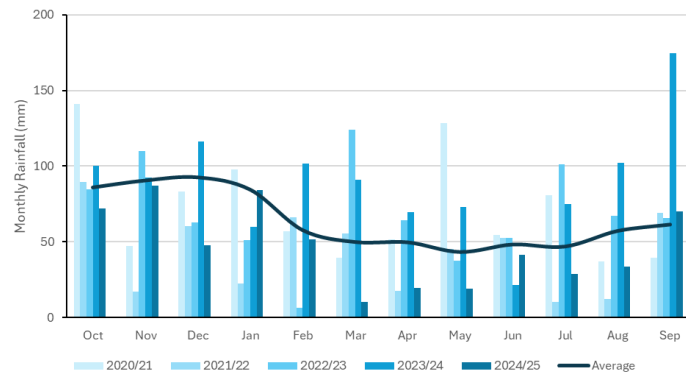


Figure 1: Monthly rainfall data 2020/21 to 2024/25

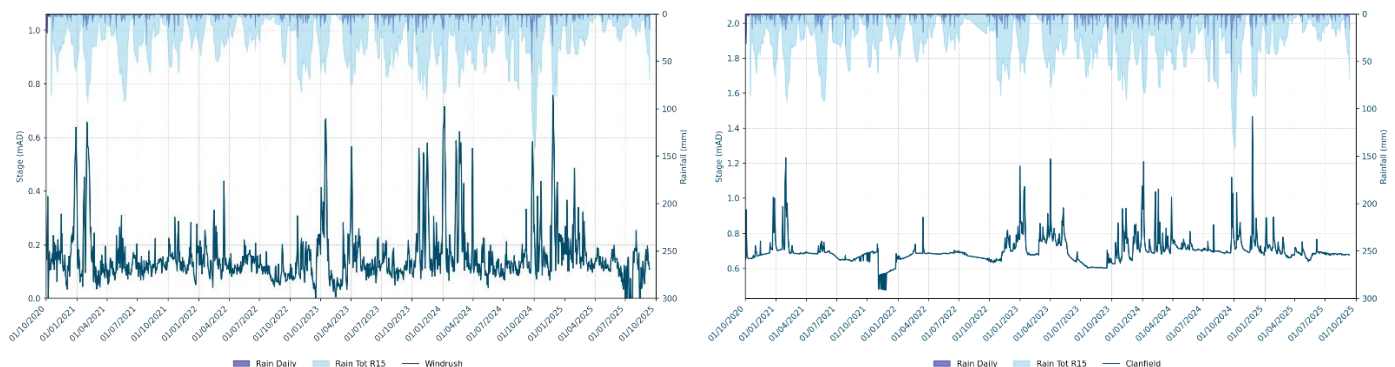


Figure 2: River Level data for Windrush at Worsham / Figure 3: River Level data for Clanfield Brook at Clanfield

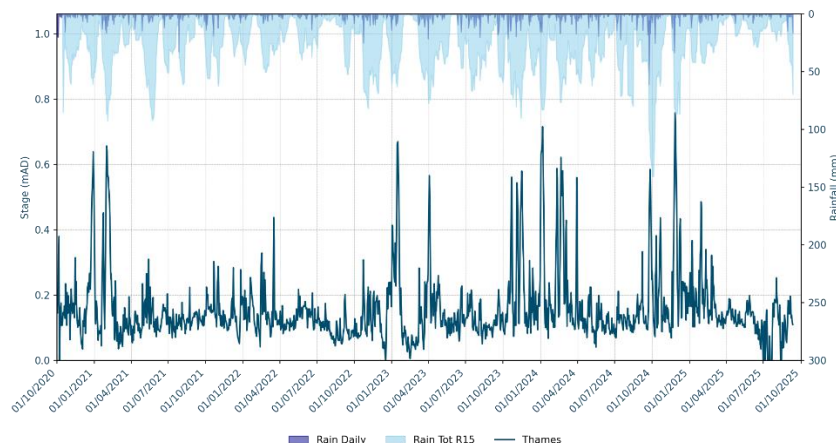


Figure 4: River Level data for River Thames at Radcot Lock

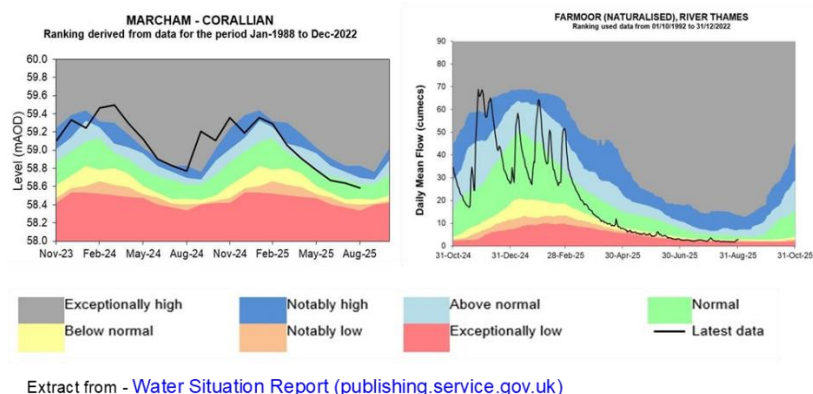


Figure 5: Ground Water situation Report

Table 1 below details the last 2 years performance of overflows in the catchment. To assess EDM performance and its relation to groundwater infiltration, a review of the month-on-month spill performance in 2023 and 2024 against the monthly total rainfall values has been undertaken, as observed in Figure 6.

Event Duration Monitoring	2023		2024	
Overflow	Annual Spills	Duration (hours)	Annual Spills	Duration (hours)
Clanfield STW	150	3156	172	3402.45

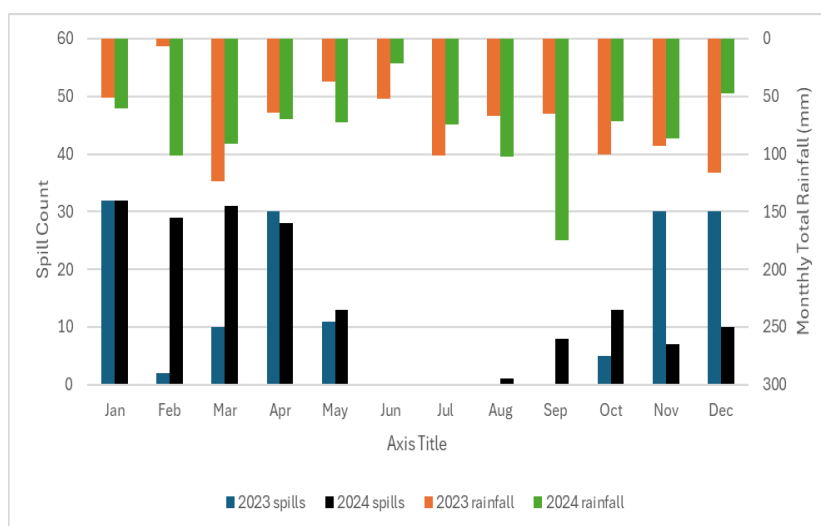


Figure 6: Monthly rainfall data versus monthly spill count for 2023 and 2024 – Clanfield STW

Table 2 below outlines the remediation works undertaken to address infiltration in the catchment, and enhancements to treatment works and/or pumping stations. Please note that this table only refers to work completed in the previous year.

Investigation / remediation type	2020/21	2021/22	2022/23	2023/24	2024/25
CCTV surveys	-	136m	-	9,105m	-
Look and lift surveys	-	3	2	-	-
Sewer lining	-	281	-	1,743m	2,783m
Patch lining	-	-	2	1,725m	996m
Manhole sealing / plates / covers and frames replaced	-	1	-	296	24
ATAC unit deployment	-	-	-	-	-

## Summary

A review of river level data over 2023/24 has increased compared to previous years. The number and duration of spills have increased in 2024 compared to 2023. The higher number of annual spills and river levels could be a result of the increased rainfall in 2024 (seen in Figure 6). Moreover, there is a slight drop in groundwater levels for 2024/2025 compared to the groundwater levels of the previous year, but the effect of this decrease will be analysed when 2025 spill data is published.

Thames Water delivered a wastewater treatment enhancement scheme in 2022 which has increased treatment capacity, reducing the likelihood of storm discharges. The extensive GISMP strategic manhole and sealing works also have a bearing on the reduction in spills.



# Faringdon

Faringdon is located in Oxfordshire, approximately 18 miles southwest of Oxford.

This addendum provides an update on work undertaken in the hydrological year October 2024 to September 2025 for the Faringdon sewerage system. The key points covered include:

- Hydrological conditions
- Performance of the sewerage system
- Mitigation / remedial measures progressed over the last year

Figures 1 to 2 illustrate the relationship between rainfall and spills at CSOs. Figure 1 shows a decrease in rainfall from 2023/24 into 2024/25, correlating to fewer and shorter spills at the CSOs, shown in Figure 2.

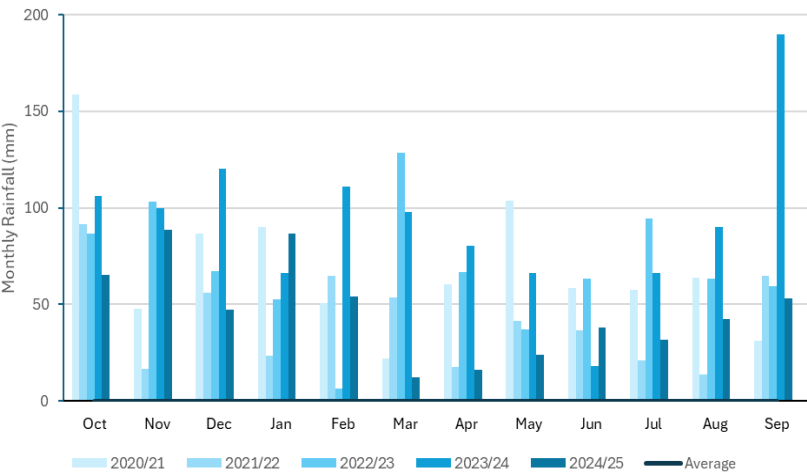


Figure 1: Monthly rainfall data 2020/21 to 2024/25

Table 1 below details the last 2 years performance of overflows in the catchment. To assess EDM performance and its relation to groundwater infiltration, a review of the month-on-month spill performance in 2023 and 2024 against the monthly total rainfall values has been undertaken, as observed in Figure 2.

Event Duration Monitoring	2023		2024	
Overflow	Annual Spills	Duration (hours)	Annual Spills	Duration (hours)
Faringdon STW	116	527	138	790.15

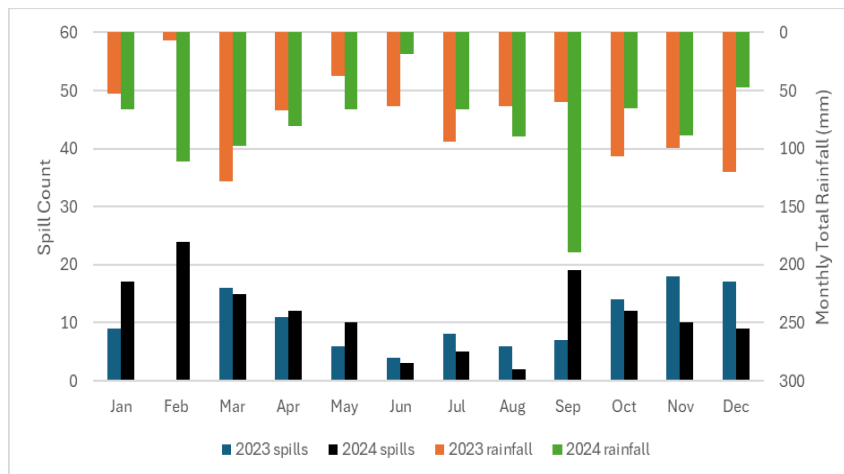


Figure 2: Monthly rainfall data versus monthly spill count for 2023 and 2024 – Faringdon STW

Table 2 below outlines the remediation works undertaken to address infiltration in the catchment, and enhancements to treatment works and/or pumping stations. Please note that this table only refers to work completed in the previous year.

Investigation / remediation type	2020/21	2021/22	2022/23	2023/24	2024/25
CCTV surveys	-	-	-	360m	120m
Look and lift surveys	-	-	-	-	-
Sewer lining	-	-	-	-	-
Patch lining	-	-	-	-	-
Manhole sealing / plates / covers and frames replaced	-	-	-	-	-
ATAC unit deployment	-	-	-	-	-

## Summary

The number and duration of spills have increased in 2024 compared to 2023. The higher number of annual spills could be a result of the increased rainfall in 2024 (seen in Figure 2). This suggests that rainfall directly correlates to spill events. However, there is insufficient evidence to support the validity of this correlation, as the highest number of spills for 2024 (February) does not occur during one of the wettest months.

In the reporting year, we have undertaken CCTV survey of our sewers network, covering some 120 metres. These CCTV surveys help us monitor the condition of sewer network as well as identifying potential defects that could allow groundwater infiltration.

## Milton-under-Wychwood

Milton-under-Wychwood is located on the River Evenlode, in Oxfordshire, approximately 11km northwest of Witney.

This addendum provides an update on work undertaken in the hydrological year October 2024 to September 2025 for the Milton-under-Wychwood sewerage system. The key points covered include:

- Hydrological conditions
- Performance of the sewerage system
- Mitigation / remedial measures progressed over the last year

Figures 1 and 4 illustrate the relationship between rainfall and CSO spills at indicator sites. As shown in Figure 1, the decrease in rainfall from 2023/24 to 2024/25 correlates with decrease in the number and duration of CSO spill events shown in Figure 4. River levels remain consistent between 2023/24 and 2024/25 observing Figure 2.

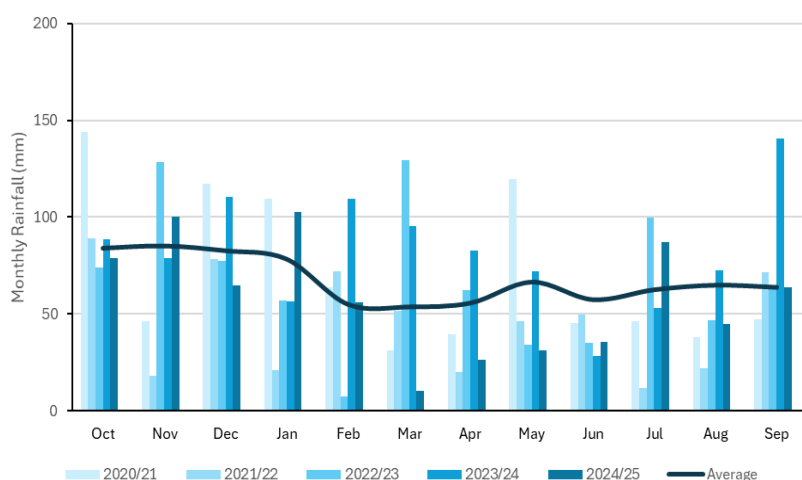


Figure 1: Monthly rainfall data 2020/21 to 2024/25

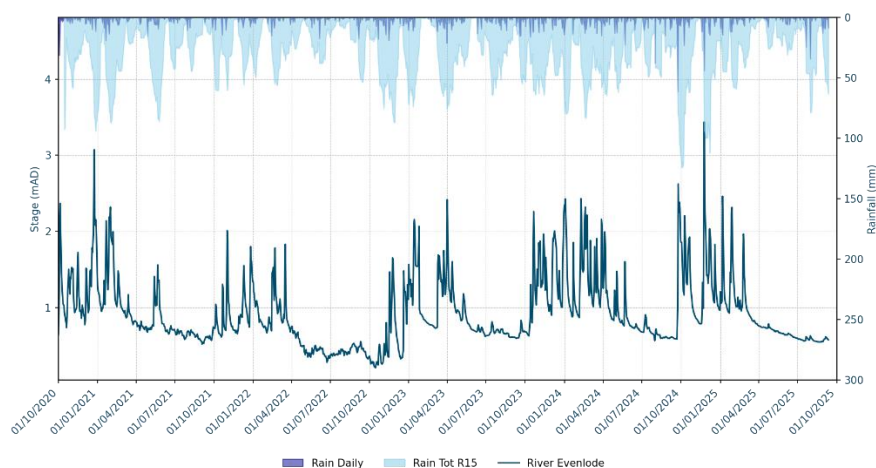


Figure 2: River Level data for River Evenlode, Shipton

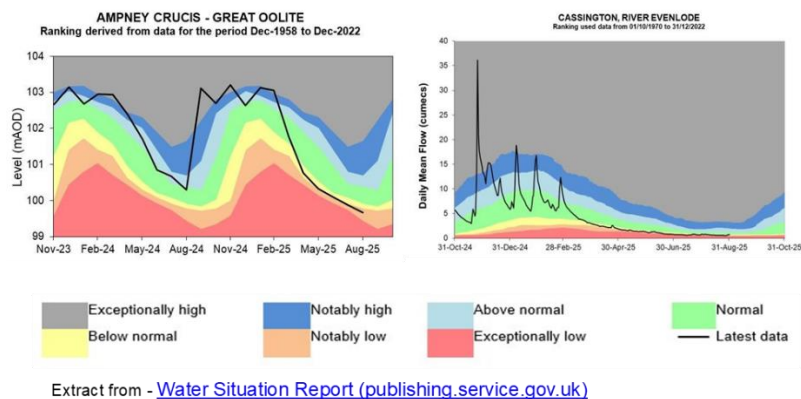


Figure 3: Ground Water situation Report

Table 1 below details the last 2 years performance of overflows in the catchment. To assess EDM performance and its relation to groundwater infiltration, a review of the month-on-month spill performance in 2023 and 2024 against the monthly total rainfall values has been undertaken, as observed in Figure 4.

Event Duration Monitoring	2023		2024	
Overflow	Annual Spills	Duration (hours)	Annual Spills	Duration (hours)
Milton-under-Wychwood STW	126	2141.75	152	2657.15

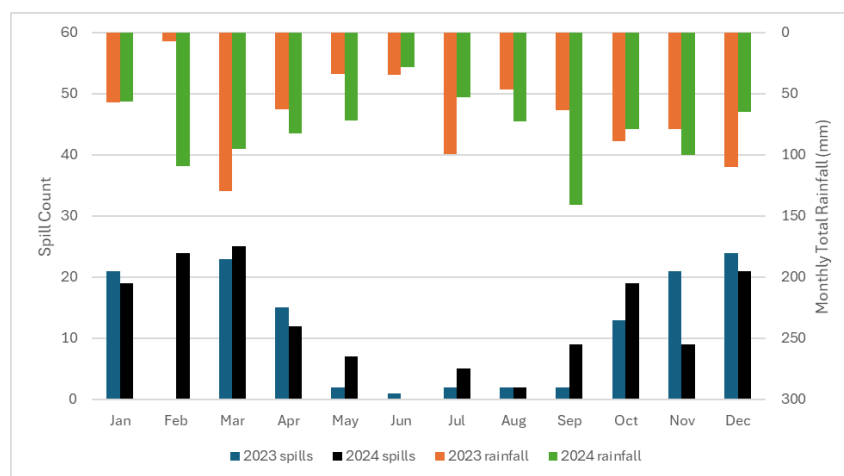


Figure 4: Monthly rainfall data versus monthly spill count for 2023 and 2024 – Milton-under-Wychwood STW

Table 2 below outlines the remediation works undertaken to address infiltration in the catchment, and enhancements to treatment works and/or pumping stations. Please note that this table only refers to work completed in the previous year.

Investigation / remediation type	2020/21	2021/22	2022/23	2023/24	2024/25
CCTV surveys	-	-	-	1,893m	-
Look and lift surveys	-	-	-	-	-
Sewer lining	-	-	-	-	-
Patch lining	-	-	-	-	-
Manhole sealing / plates / covers and frames replaced	-	-	-	-	-
ATAC unit deployment	-	-	-	-	-

## Summary

A review of river level data over 2023/24 has remained consistent compared to previous years. The number and duration of spills have increased in 2024 compared to 2023. The higher number of annual spills could be a result of the increased rainfall in 2024 (seen in Figure 4). Moreover, groundwater levels for 2024/2025 have remained consistent compared to the groundwater levels of the previous year, but the effect of this will be analysed when 2025 spill data is published.

# Moreton-in-Marsh

Moreton-in-Marsh is located on the River Evenlode in Gloucestershire, approximately 6km north of Stow on the Wold. This addendum provides an update on work undertaken in the hydrological year October 2024 to September 2025 for the Moreton-in-Marsh sewerage system. The key points covered include:

- Hydrological conditions
- Performance of the sewerage system
- Mitigation / remedial measures progressed over the last year

Figures 1 to 6 illustrate the relationship between rainfall and CSO spills at indicator sites. As observed in Figure 1, there decrease in rainfall from 2023/24 to 2024/25. However, recorded river level data follows a similar profile between 2023/24 and 2024/25 observing Figures 2 and 3. Additionally, there is no spills data for 2025.

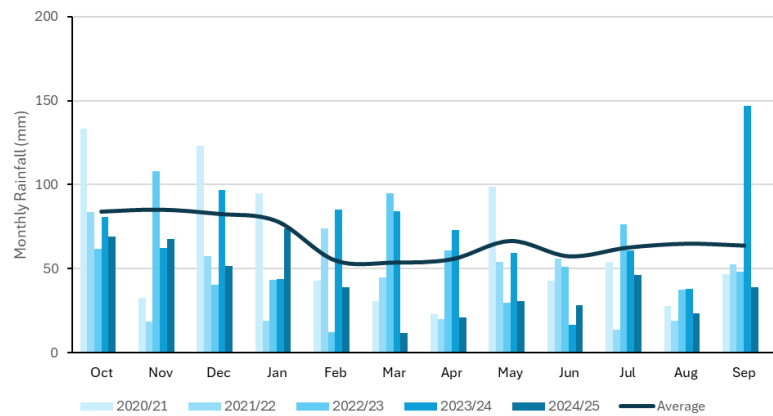


Figure 1: Monthly rainfall data 2020/21 to 2024/25

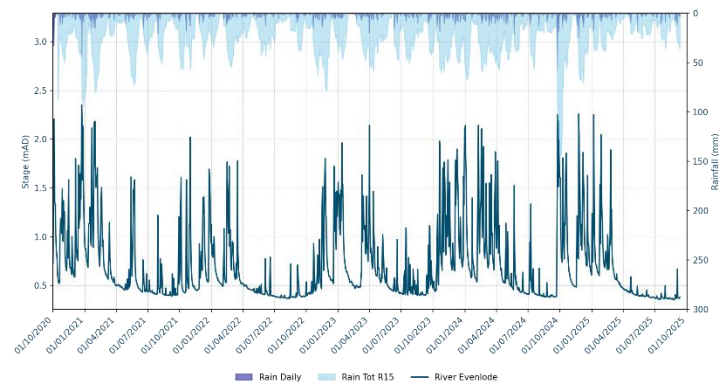


Figure 2: River Level data for River Evenlode, Evenlode Bridge

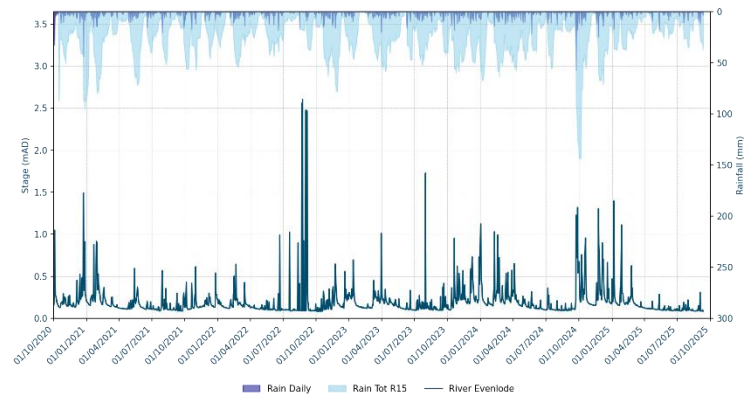


Figure 3: River Level data for River Evenlode, Moreton-in-Marsh

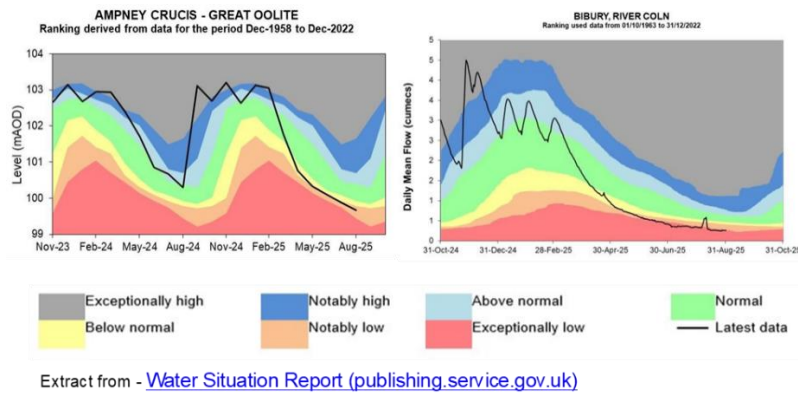


Figure 4: Ground Water situation Report

Table 1 below details the last 2 years performance of overflows in the catchment. To assess EDM performance and its relation to groundwater infiltration, a review of the month-on-month spill performance in 2023 and 2024 against the monthly total rainfall values has been undertaken, as observed in Figure 5 and 6.

Event Duration Monitoring	2023		2024	
Overflow	Annual Spills	Duration (hours)	Annual Spills	Duration (hours)
CSO at Moreton in Marsh SPS	4	20.7	26	157.45
Storm Sewage Irrigation Area (Primrose Court SPS)	128	2012.50	138	2055.45

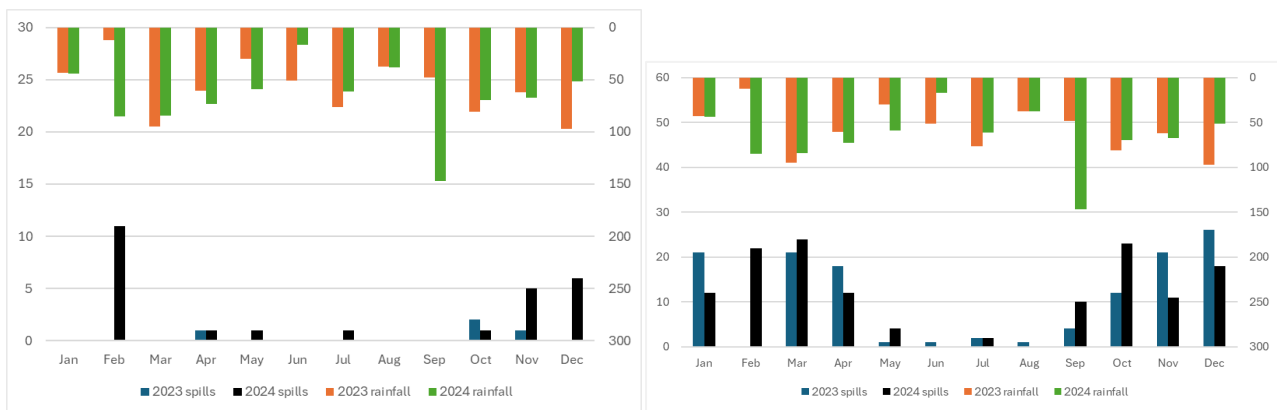


Figure 5: EDM Monthly Performance – CSO at Moreton in Marsh SPS / Figure 6: EDM Monthly Performance – Storm Sewage Irrigation Area (Primrose Court SPS)



Table 2 below outlines the remediation works undertaken to address infiltration in the catchment, and enhancements to treatment works and/or pumping stations. Please note that this table only refers to work completed in the previous year.

Investigation / remediation type	2020/21	2021/22	2022/23	2023/24	2024/25
CCTV surveys	-	-	-	-	-
Look and lift surveys	-	-	-	-	-
Sewer lining	-	-	36m	-	-
Patch lining	-	-	-	-	-
Manhole sealing / plates / covers and frames replaced	-	-	-	-	-
ATAC unit deployment	-	-	-	-	-

## Summary

A review of river level data over 2023/24 has remained consistent compared to previous years. The number and duration of spills have increased in 2024 compared to 2023 for CSO at Moreton in Marsh SPS and Storm Sewage Irrigation Area (Primrose Court SPS). The higher number of annual spills could be a result of the increased rainfall in 2024 (seen in Figure 5 & 6). Moreover, groundwater levels for 2024/2025 have remained consistent compared to the groundwater levels of the previous year, but the effect of this will be analysed when 2025 spill data is published.

## Standlake

Standlake is located on the River Windrush, in West Oxfordshire, approximately 8km southeast of Witney.

This addendum provides an update on work undertaken in the hydrological year October 2024 to September 2025 for the Standlake sewerage system. The key points covered include:

- Hydrological conditions
- Performance of the sewerage system
- Mitigation / remedial measures progressed over the last year

Figures 1 to 4 illustrate the relationship between rainfall and CSO spills at indicator sites. As shown in Figure 1, the decrease in rainfall from 2023/24 to 2024/25 correlates with fewer CSO spills, as shown in Figure 4. Observing the river levels in Figure 2, there is a slight decrease in 2024/25 from 2023/24.

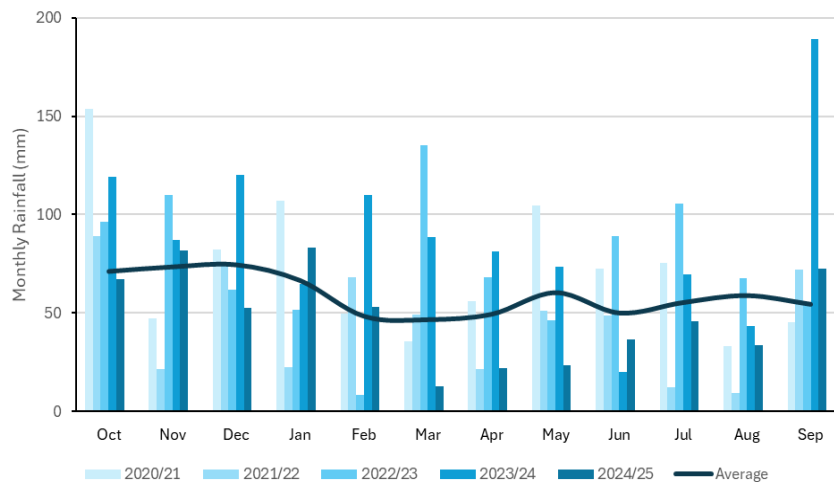


Figure 1: Monthly rainfall data 2020/21 to 2024/25

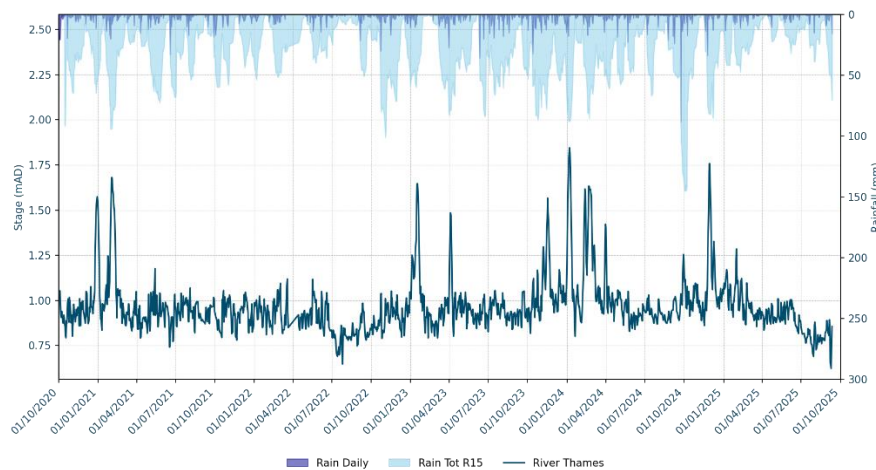


Figure 2: River Level data for River Thames, Farmoor

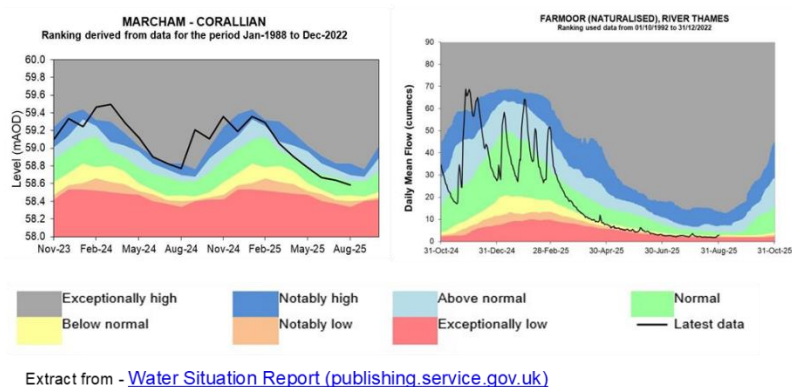


Figure 3: Ground Water situation Report

Table 1 below details the last 2 years performance of overflows in the catchment. To assess EDM performance and its relation to groundwater infiltration, a review of the month-on-month spill performance in 2023 and 2024 against the monthly total rainfall values has been undertaken, as observed in Figure 4.

Event Duration Monitoring	2023		2024	
Overflow	Annual Spills	Duration (hours)	Annual Spills	Duration (hours)
Standlake STW	131	2769	180	3967.45

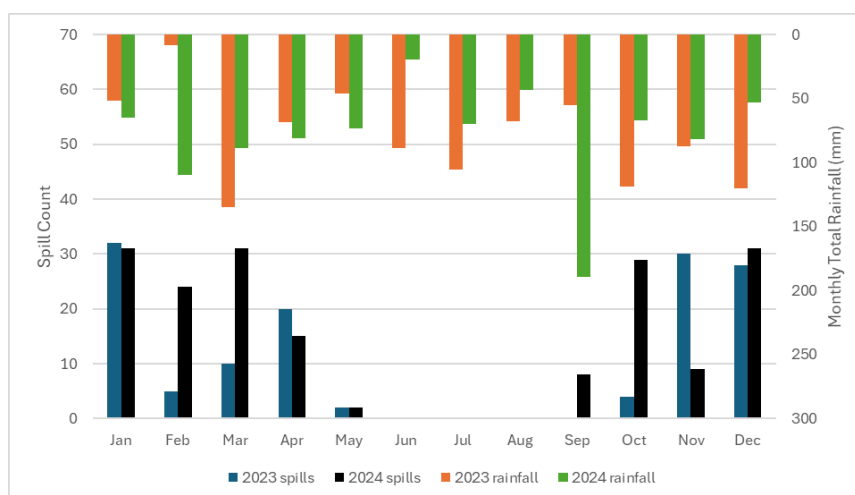


Figure 4: Monthly rainfall data versus monthly spill count for 2023 and 2024 – Standlake STW

Table 2 below outlines the remediation works undertaken to address infiltration in the catchment, and enhancements to treatment works and/or pumping stations. Please note that this table only refers to work completed in the previous year.

Investigation / remediation type	2020/21	2021/22	2022/23	2023/24	2024/25
CCTV surveys	-	350m	2,007m	1,200m	-
Look and lift surveys	-	-	3	2	-
Sewer lining	-	-	-	-	-
Patch lining	-	2	3	-	-
Manhole sealing / plates / covers and frames replaced	-	-	-	-	-
ATAC unit deployment	-	-	-	-	-

## Summary

A review of river level data over 2023/24 has increased compared to previous years. The number and duration of spills have increased in 2024 compared to 2023. The higher number of annual spills and river levels could be a result of the increased rainfall in 2024 (seen in Figure 4). Moreover, there is a slight drop in groundwater levels for 2024/2025 compared to the groundwater levels of the previous year, but the effect of this decrease will be analysed when 2025 spill data is published.

Witney is located on the River Windrush in Oxfordshire, approximately 12 miles West of Oxford.

This addendum provides an update on work undertaken in the hydrological year October 2024 to September 2025 for the Witney sewerage system. The key points covered include:

- Hydrological conditions
- Performance of the sewerage system
- Mitigation / remedial measures progressed over the last year

Figures 1 to 5 illustrate the relationship between rainfall and CSO spills at indicator sites. As shown in Figure 1, the decrease in rainfall from 2023/24 to 2024/25 correlates with fewer CSO spills, as presented in Figure 5. River levels (Figures 2 and 3) remained consistent.

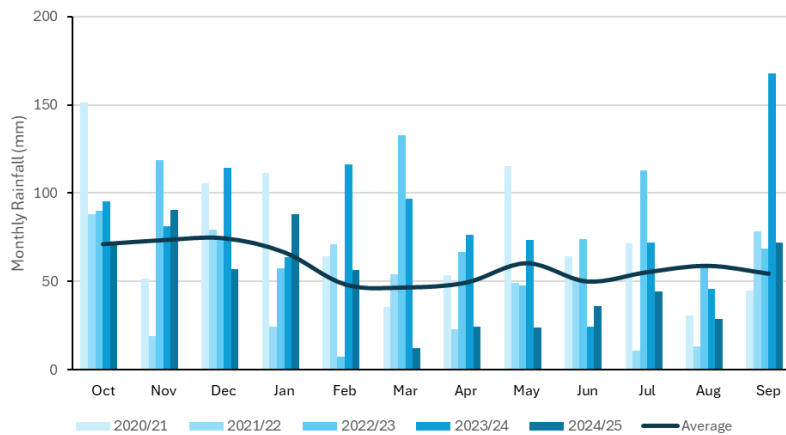


Figure 1: Monthly rainfall data 2020/21 to 2024/25

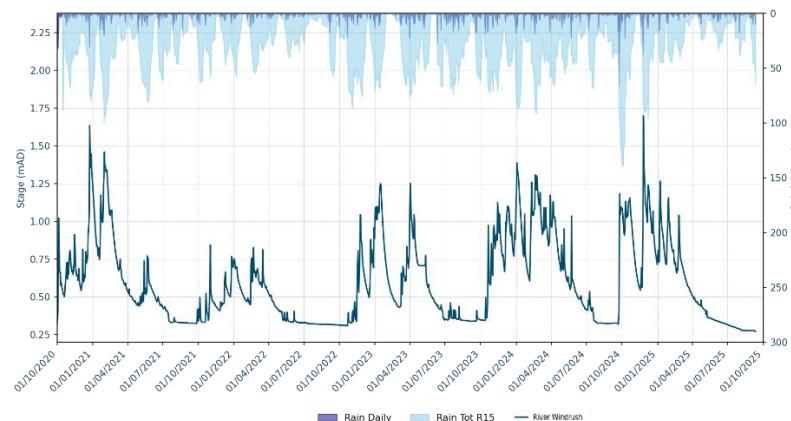


Figure 2: River Level data for River Windrush, Worsham

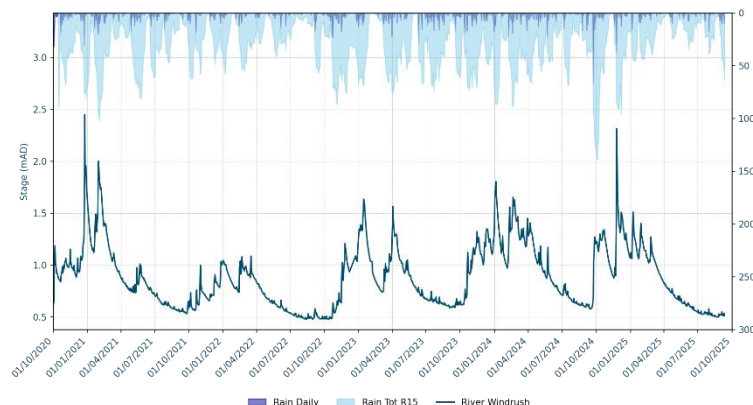


Figure 3: River Level data for River Windrush, Witney

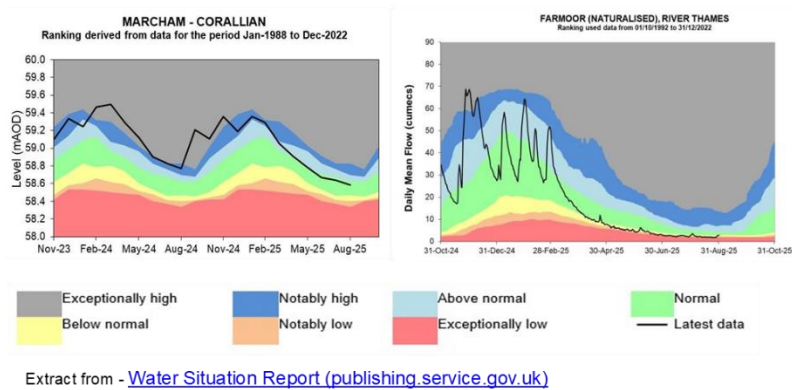


Figure 4: Ground Water situation Report

Table 1 below details the last 2 years performance of overflows in the catchment. To assess EDM performance and its relation to groundwater infiltration, a review of the month-on-month spill performance in 2023 and 2024 against the monthly total rainfall values has been undertaken, as observed in Figure 5.

Event Duration Monitoring	2023		2024	
Overflow	Annual Spills	Duration (hours)	Annual Spills	Duration (hours)
Witney STW	119	2206.5	141	2800

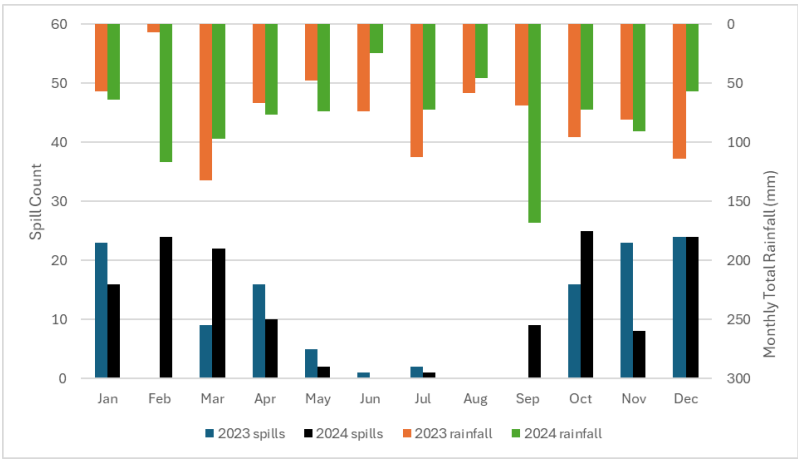


Figure 5: Monthly rainfall data versus monthly spill count for 2023 and 2024 – Witney STW

Table 2 below outlines the remediation works undertaken to address infiltration in the catchment, and enhancements to treatment works and/or pumping stations. Please note that this table only refers to work completed in the previous year.

Investigation / remediation type	2020/21	2021/22	2023/24	2023 /24	2024 /25
CCTV surveys	-	4,963m	1,437m	555m	-
Look and lift surveys	-	-	4	4	-
Sewer lining	-	10m	1,182m	24	-
Patch lining	-	-	-	-	-
Manhole sealing / plates / covers and frames replaced	-	5	4	-	-
ATAC unit deployment	-	-	-	-	-

## Summary

A review of river level data over 2023/24 has remained consistent compared to previous years. The number and duration of spills have increased in 2024 compared to 2023. The higher number of annual spills could be a result of the increased rainfall in 2024 (seen in Figure 5). Moreover, there is a slight drop in groundwater levels for 2024/2025 compared to the groundwater levels of the previous year, but the effect of this decrease will be analysed when 2025 spill data is published.



